



# Lismore Boulevard, Colindale Gardens, Colindale,

Asking Price: £645,000

 Benham  
& Reeves

# Lismore Boulevard, Colindale Gardens, Colindale, NW9

🏠 3 Bedroom (s) 🚿 2 Bathroom (s) 🔑 Leasehold

A superb three bedroom apartment situated on the fourth floor of Citrine House, Colindale Gardens. This bright and airy property is built up of 954 square feet (approx.) and boasts a fully integrated matt finish kitchen with Siemens appliances, slimline laminate worktop and painted glass splashback. The open planned kitchen diner leads out to the private balcony facing east. All bedrooms share the same Amtico Spacia flooring as the living areas, with bedroom one and two having the added luxury of fitted wardrobes. Bedroom one further benefits from an ensuite shower room - the ensuite and family bathroom are stylishly fitted with Porcelanosa wall and floor tiles, mirrored vanity wall unit and polished chrome electric heated towel rail. Further benefits include a unit cupboard with ample storage, valid LABC building warranty, an allocated car space and a long lease remaining.

Colindale Gardens is a vibrant community in North West London, conveniently located just a short walk from the Northern Line tube station, with access to both the West End and the City. There's also an exciting range of amenities on site, including a gym and a 24 hour concierge. There are plans for a new primary school, local shops, cafés and restaurants. Residents enjoy an astonishing amount of green space, with a glorious four acre park, walkways and attractive landscaping. Colindale London Underground station is currently undergoing improvement, making getting around by public transport even more convenient. The underground is also now running through the night on Fridays and Saturdays.

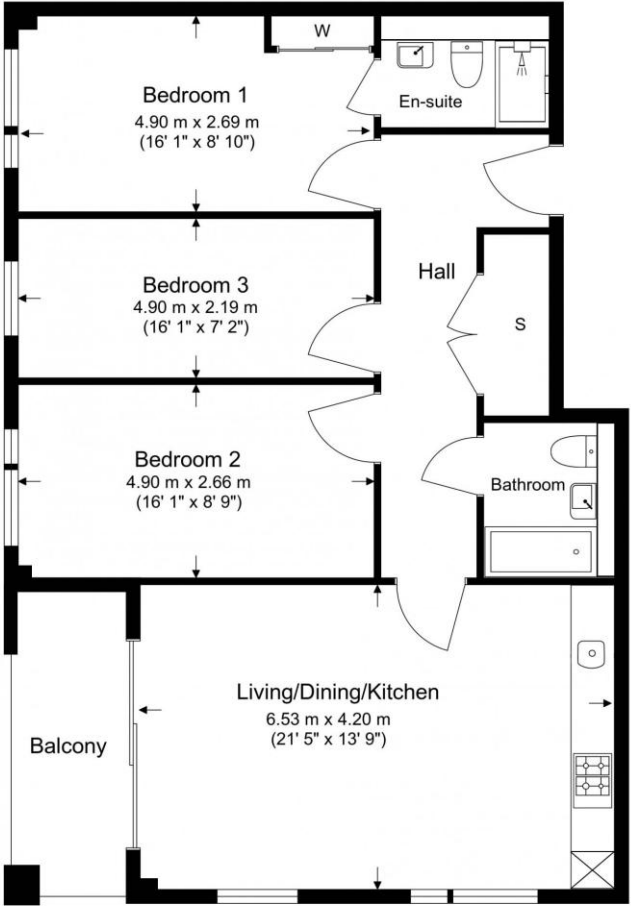




## Property Features:

- Secure Allocated Parking
- Superb Three Bedroom Apartment
- Two Bathrooms
- 954 Square Feet (Approx.)
- Fourth Floor
- East Facing
- 24 Hour Concierge Desk & Residents Gym
- Colindale Tube Station (Northern Line)

4th Floor  
 Total Gross Internal Area  
 86.6 Sq/m - 954 Sq/ft



Score	Energy rating	Current	Potential
92+	A		
81-91	B	87 B	87 B
69-80	C		
55-68	D		
39-54	E		
21-38	F		
1-20	G		



Floor Plan measurements are approximate and are for illustrative purposes only. While we do not doubt the floor plans accuracy, we make no guarantee, warranty or representation as to the accuracy and completeness of the floor plan.

## Terms & Conditions:

These particulars are for guidance purposes only and do not form part of an offer or contract.

Asking Price:	£645,000
Tenure:	Leasehold Expires 31/12/3015 Approximately 989 Years Remaining
Ground Rent:	Peppercorn
Service Charge:	£3,036.54 (per annum) For the year of 2026
Anticipated Rent:	£2,800.00 pcm Approx. 5.2% Yield

## Viewings:

All viewings are by appointment only through our Beaufort Park Office.

Our reference: CHD260010

T: 020 8732 7980

E: [beaufortpark.sales@benhams.com](mailto:beaufortpark.sales@benhams.com)

W: [www.benhams.com](http://www.benhams.com)

Disclaimer: These particulars are for guidance purposes only and do not form part of an offer or contract. Whilst care has been taken in their preparation, Benham and Reeves or the vendor shall not be held responsible for any inaccuracies. You should not rely on statements by Benham and Reeves Ltd in the particulars or by word of mouth or in writing as being factually accurate about the property, its condition or its value. Any areas, measurements or distances are approximate. The text, photographs and plans are for guidance only. The photographs appearing in these particulars show only certain parts of the property at the time when the photographs were taken. It should not be assumed that the property has all or any of the necessary planning permission, building regulation consent approval or other required consents for its previous, present or future intended usage. Any intending purchasers must satisfy themselves by inspection or by taking appropriate professional advice. Benham and Reeves Ltd has not rested any of the equipment, fittings or facilities.

London | Canary Wharf | City | Colindale | Dartmouth Park | Ealing | Fulham | Hampstead  
Hammersmith | Highgate | Hyde Park | Kensington | Kew | Knightsbridge | Nine Elms  
Surrey Quays | Shoreditch | Wembley | Wapping | White City | Woolwich

International | China | Hong Kong | India | Israel | Malaysia | Middle East | Pakistan  
Singapore | South Africa | Turkey

