



Faulkner House, Tierney Lane, Hammersmith, W6

Asking Price: £1,750,000

 Benham
& Reeves

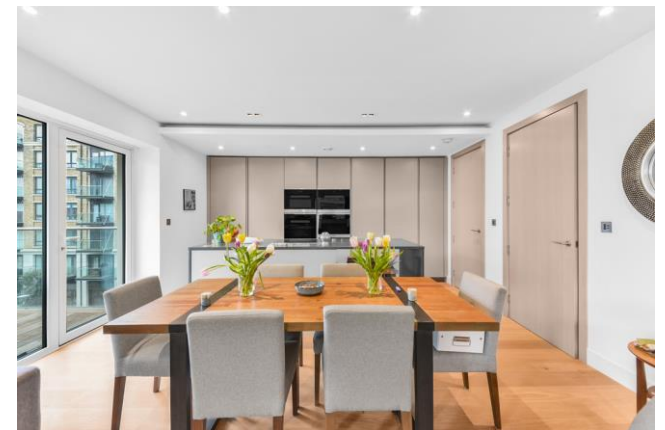
Faulkner House, Tierney Lane, Hammersmith, W6

 3 Bedroom (s)  3 Bathroom (s)  Leasehold

A delightfully bright flat in Fulham Reach, one of London's finest new riverside developments. Set on the third floor, the apartment offers 1,362 square feet (approx.) of contemporary living space, comprising an open-plan reception, floor-to-ceiling windows affording plenty of natural light, and access to two private balconies. There is a fully integrated, modern kitchen, high-end appliances, a dining area and a utility room. The main bedroom benefits from built-in storage and an en-suite bathroom. There are an additional two double bedrooms, also with built-in storage, that both share a Jack and Jill en-suite bathroom, with one having access to one of the balconies. The apartment further benefits from air conditioning, underfloor heating and wooden flooring throughout. There is a storage cupboard in the hallway and secure underground parking.

Residents are also invited to be a part of a private members' club, which grants them access to an array of exclusive facilities, including a gym, spa, wine cellar, golf simulator, snooker room and cinema room.

Faulkner House is perfectly situated within walking distance of the amenities of Hammersmith Broadway and Hammersmith Underground station, which is served by the District, Circle, Piccadilly and Hammersmith & City lines, excellent transport links providing easy access to London's business, shopping, entertainment areas and all London regional airports.





Property Features:

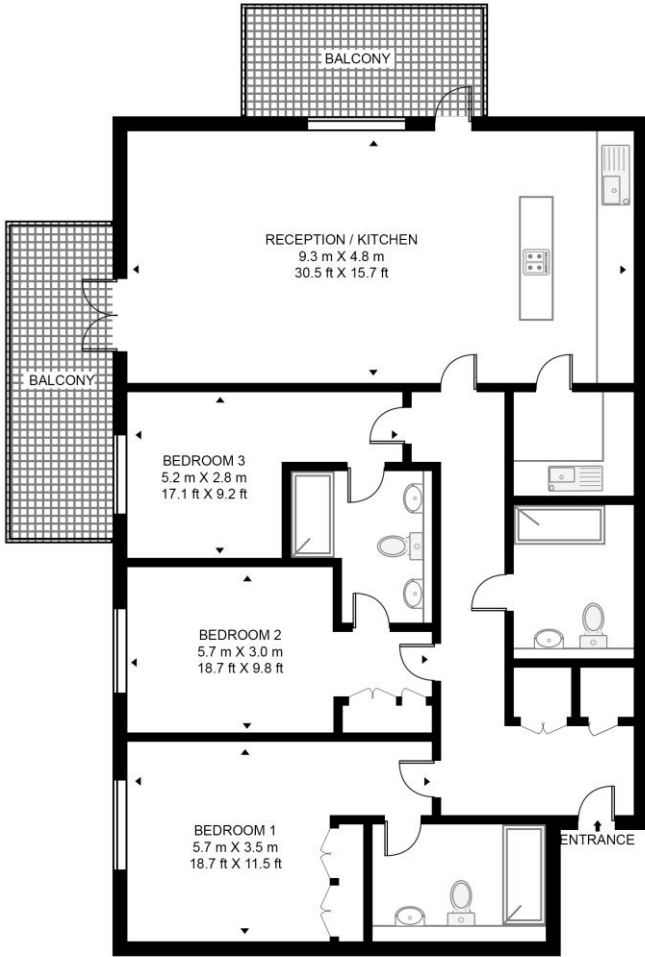
- Three Bedrooms
- Three Bathrooms
- Third Floor
- 1,362 Square Feet (Approx.)
- Two Private South-East and South-West Facing Balconies
- With Underground Right to Park Space
- 24-Hour Concierge
- Residents' Gym, Pool, Spa Facilities and Cinema Room
- Hammersmith Underground Station (Zone 2)



Faulkner House, Tierney Lane, Hammersmith, W6



FAULKNER HOUSE, FULHAM REACH
 APPROXIMATE GROSS INTERNAL FLOOR AREA 1362 SQ.FT (126.5 SQ.M)



THIRD FLOOR

Score	Energy rating	Current	Potential
92+	A		
81-91	B	88 B	88 B
69-80	C		
55-68	D		
39-54	E		
21-38	F		
1-20	G		

This floor plan has been defined by the RICS Code of Measurement. This floor plan and all others are for approximate representative purposes only and upon usage is agreed to as such by the client.
 WWW: hdvirtualart.com | TEL: 0203.974.1567 | EMAIL: info@hdvirtualart.com

Terms & Conditions:

These particulars are for guidance purposes only and do not form part of an offer or contract.

Asking Price:	£1,750,000
Tenure:	Leasehold Expires 28/11/3010 Approximately 984 Years Remaining
Ground Rent:	£976.50 (per annum) Review Period: 10 years Next: 2031 Increase: By RPI for the relevant year
Service Charge:	£10,809.30 (per annum) for the year 2025

Viewings:

All viewings are by appointment only through our Hammersmith Office.

Our reference: NIN250271

T: 020 8600 0960

E: hammersmith.sales@benhams.com

W: www.benhams.com

Disclaimer: These particulars are for guidance purposes only and do not form part of an offer or contract. Whilst care has been taken in their preparation, Benham and Reeves or the vendor shall not be held responsible for any inaccuracies. You should not rely on statements by Benham and Reeves Ltd in the particulars or by word of mouth or in writing as being factually accurate about the property, its condition or its value. Any areas, measurements or distances are approximate. The text, photographs and plans are for guidance only. The photographs appearing in these particulars show only certain parts of the property at the time when the photographs were taken. It should not be assumed that the property has all or any of the necessary planning permission, building regulation consent approval or other required consents for its previous, present or future intended usage. Any intending purchasers must satisfy themselves by inspection or by taking appropriate professional advice. Benham and Reeves Ltd has not rested any of the equipment, fittings or facilities.

London | Canary Wharf | City | Colindale | Dartmouth Park | Ealing | Fulham | Hampstead
Hammersmith | Highgate | Hyde Park | Kensington | Kew | Knightsbridge | Nine Elms
Surrey Quays | Shoreditch | Wembley | Wapping | White City | Woolwich

International | China | Hong Kong | India | Israel | Malaysia | Middle East | Pakistan
Singapore | South Africa | Turkey

