



# Exeter House, Putney Heath, Putney, SW15

Asking Price: £725,000

 Benham  
& Reeves

# Exeter House, Putney Heath, Putney, SW15

 3 Bedroom (s)  4 Bathroom (s)  Leasehold

An extremely bright and spacious purpose-built period apartment, offering 1,369 square feet, situated on the second floor of an attractive, iconic 1930s mansion block.

This well-presented property offers a generous and flexible lateral space with a pleasant, light and airy aspect. A notable feature is the well-proportioned reception room with its wood flooring and attractive fireplace. The accommodation includes a large principal bedroom, two additional double bedrooms, three en-suite bathrooms, a family bathroom, a double reception room, and a kitchen/breakfast room.

Exeter House is a 1930s Art Deco-style development benefiting from off-street parking, porter, communal gardens, and tennis Courts, secreted away on Putney Heath, with its leafy surroundings, local pub, and cricket pitch.

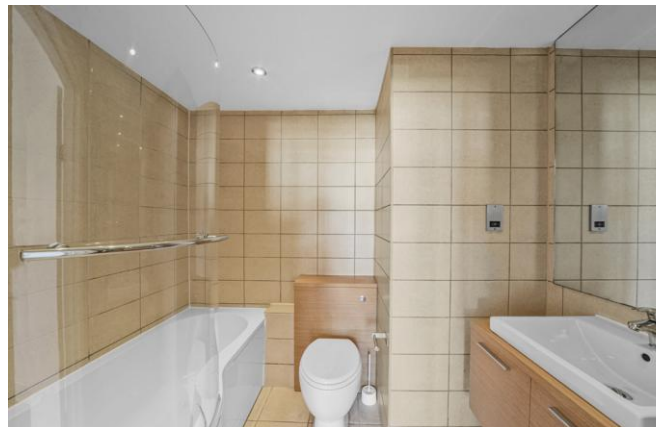
There are excellent direct bus services to Putney High Street, the West End, the City, Richmond & Tooting. Additional transport links include East Putney Underground (District Line) and Putney mainline station with easy routes into London Victoria and London Waterloo.





## Property Features:

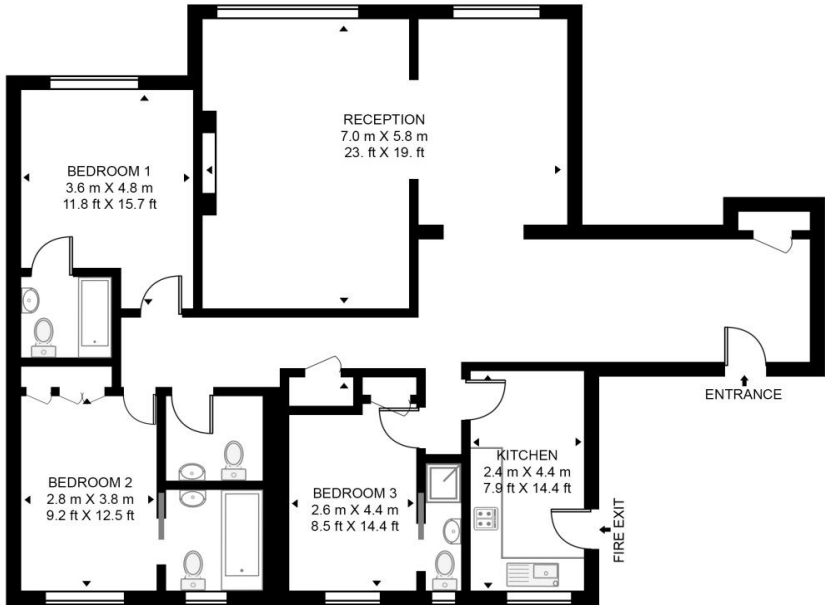
- Bright & Spacious Apartment
- Three Bedrooms
- Three Bathrooms
- Guest WC
- Double Reception Room
- 1,369 Square Feet (Approx.)
- Recently Refurbished
- Lift
- Off-Street Parking
- Residents' Porter, Tennis Courts & Communal Gardens
- Opposite Putney Heath



# Exeter House, Putney Heath, Putney, SW15



**EXETER HOUSE, PUTNEY HEATH**  
 APPROXIMATE GROSS INTERNAL FLOOR AREA 1369 SQ.FT (127.2 SQ.M)



SECOND FLOOR

Score	Energy rating	Current	Potential
92+	A		
81-91	B		
69-80	C		
55-68	D	57 D	65 D
39-54	E		
21-38	F		
1-20	G		

This floor plan has been defined by the RICS Code of Measurement. This floor plan and all others are for approximate representative purposes only and upon usage is agreed to as such by the client.  
 WWW: hdivirtualart.com | TEL: 0203.974.1567 | EMAIL: info@hdivirtualart.com

## Terms & Conditions:

These particulars are for guidance purposes only and do not form part of an offer or contract.

Asking Price:	£725,000
Tenure:	Leasehold Ask agent
Ground Rent:	Nil
Service Charge:	£7,884.24 (per annum) for the year 2026, including the garage service charge.
Anticipated Rent:	£3,000.00 pcm Approx. 5.0% Yield

## Viewings:

All viewings are by appointment only through our Hammersmith Office.

Our reference: NWH250092

T: 020 3282 3700

E: [hammersmith.sales@benhams.com](mailto:hammersmith.sales@benhams.com)

W: [www.benhams.com](http://www.benhams.com)

Disclaimer: These particulars are for guidance purposes only and do not form part of an offer or contract. Whilst care has been taken in their preparation, Benham and Reeves or the vendor shall not be held responsible for any inaccuracies. You should not rely on statements by Benham and Reeves Ltd in the particulars or by word of mouth or in writing as being factually accurate about the property, its condition or its value. Any areas, measurements or distances are approximate. The text, photographs and plans are for guidance only. The photographs appearing in these particulars show only certain parts of the property at the time when the photographs were taken. It should not be assumed that the property has all or any of the necessary planning permission, building regulation consent approval or other required consents for its previous, present or future intended usage. Any intending purchasers must satisfy themselves by inspection or by taking appropriate professional advice. Benham and Reeves Ltd has not rested any of the equipment, fittings or facilities.

London | Canary Wharf | City | Colindale | Dartmouth Park | Ealing | Fulham | Hampstead  
Hammersmith | Highgate | Hyde Park | Kensington | Kew | Knightsbridge | Nine Elms  
Surrey Quays | Shoreditch | Wembley | Wapping | White City | Woolwich

International | China | Hong Kong | India | Israel | Malaysia | Middle East | Pakistan  
Singapore | South Africa | Turkey

