



Major Draper Street, Woolwich, SE18

Asking Price: £690,000

Benham
& Reeves

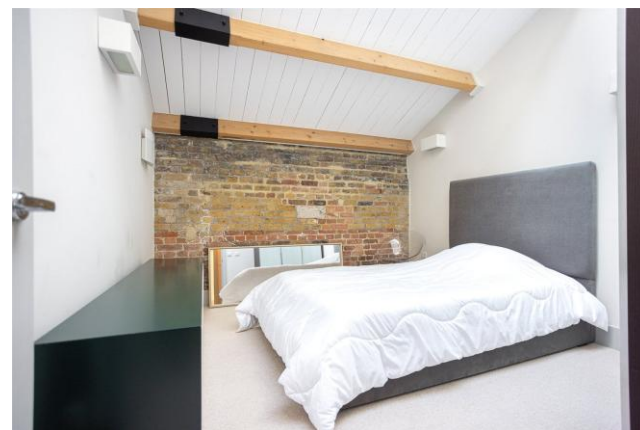
Major Draper Street, Woolwich, SE18

 3 Bedroom (s)  2 Bathroom (s)  Leasehold

Situated within the highly sought-after Royal Arsenal Riverside development on Major Draper Street, this impressive three bedroom, two bathroom duplex apartment spans approximately 1,102 square feet across two floors. The property features a stylish open-plan kitchen fitted with high-quality integrated appliances, leading into a bright and airy living space ideal for both relaxing and entertaining. A private front patio provides private outdoor space. Upstairs, the principal bedroom benefits from built-in wardrobes and an en-suite shower room, while a contemporary three-piece family bathroom serves two further double bedrooms. An additional WC is conveniently located on the ground floor. Finished to an exceptional standard, this home includes Artemide designer lighting, a built-in speaker system, enhanced storage, and smart-home technology allowing the lighting and heating to be controlled via mobile applications.

Residents of Royal Arsenal Riverside are served by a range of amenities, including a residents' gym and concierge office, and are positioned within walking distance of the River Thames. In addition, Marks and Spencer's and Tesco Express are within the development, and there are large Tesco and Sainsbury's supermarkets a short walk away, plus a bustling high street with chain and independent shops, restaurants, cafés, health facilities, including a pharmacy and a GP.

The development is well connected to Woolwich Arsenal National Rail, DLR, and the Elizabeth line, providing excellent transport links across London.





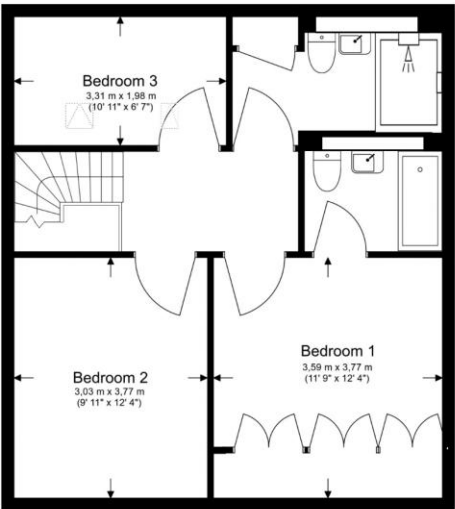
Property Features:

- Three Bedrooms
- Two Bathrooms
- Ground & First Floors
- 1102 Square Feet (Approx.)
- Open-Plan Kitchen
- Air Ventilation / Double Glazed Windows
- Residents' Gym and 24 Hour Concierge
- Woolwich National Rail and DLR Station
- Elizabeth Line (Zone 4)

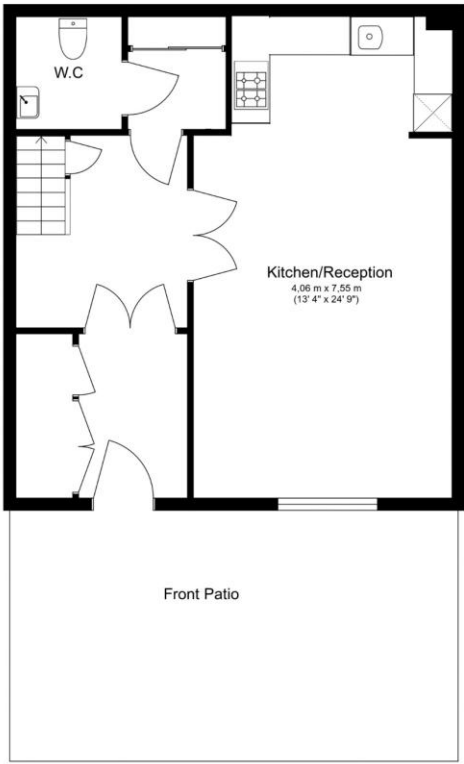


Major Draper Street, Woolwich, SE18

Total Gross Internal Area
102.4 Sq/m - 1,102 sq/ft



First Floor



Ground Floor

Floor Plan measurements are approximate and are for illustrative purposes only. While we do not doubt the floor plans accuracy, we make no guarantee, warranty or representation as to the accuracy and completeness of the floor plan.

Score	Energy rating	Current	Potential
92+	A		
81-91	B		88 B
69-80	C		
55-68	D	61 D	
39-54	E		
21-38	F		
1-20	G		

Terms & Conditions:

These particulars are for guidance purposes only and do not form part of an offer or contract.

Asking Price:	£690,000
Tenure:	Leasehold Expires 31/12/2131 Approximately 105 Years Remaining
Ground Rent:	£709.18 (per annum) until January 2037
Service Charge:	£3,491.88 (per annum) until October 2026
Anticipated Rent:	£3,000.00 pcm Approx. 5.2% Yield

Viewings:

All viewings are by appointment only through our Woolwich Office.

Our reference: WOO260229

T: 020 8051 0700

E: woolwich.sales@benhams.com

W: www.benhams.com

Disclaimer: These particulars are for guidance purposes only and do not form part of an offer or contract. Whilst care has been taken in their preparation, Benham and Reeves or the vendor shall not be held responsible for any inaccuracies. You should not rely on statements by Benham and Reeves Ltd in the particulars or by word of mouth or in writing as being factually accurate about the property, its condition or its value. Any areas, measurements or distances are approximate. The text, photographs and plans are for guidance only. The photographs appearing in these particulars show only certain parts of the property at the time when the photographs were taken. It should not be assumed that the property has all or any of the necessary planning permission, building regulation consent approval or other required consents for its previous, present or future intended usage. Any intending purchasers must satisfy themselves by inspection or by taking appropriate professional advice. Benham and Reeves Ltd has not rested any of the equipment, fittings or facilities.

London | Canary Wharf | City | Colindale | Dartmouth Park | Ealing | Fulham | Hampstead
Hammersmith | Highgate | Hyde Park | Kensington | Kew | Knightsbridge | Nine Elms
Surrey Quays | Shoreditch | Wembley | Wapping | White City | Woolwich

International | China | Hong Kong | India | Israel | Malaysia | Middle East | Pakistan
Singapore | South Africa | Turkey

