



Barking Road, Canning Town, E16

Asking Price: £340,000

 Benham
& Reeves

Barking Road, Canning Town, E16

 1 Bedroom (s)  1 Bathroom (s)  Leasehold

A spacious and modern 1 bedroom apartment in The Vermillion, Canning Town. With Panoramic views across London, this well-proportioned 506 sq.ft. 1 bedroom apartment is set on the 14th floor and offers a bright and spacious open-plan living room, floor-to-ceiling windows, oak flooring, modern kitchen, separate bedroom, family bathroom and a large balcony. The apartment also boasts air-conditioning.

Residents can enjoy the development's own private Eco-garden and pond. The development is part of East London's famous Rathbone Market which is due to be developed further in the near future. With Canning Town's massive re-generation plans, the property is perfect to live in or for investment. Canning Town Jubilee line and DLR is on the doorstep so residents have easy access to Stratford, Canary Wharf and The City and all the bars, restaurants and amenities they offer.

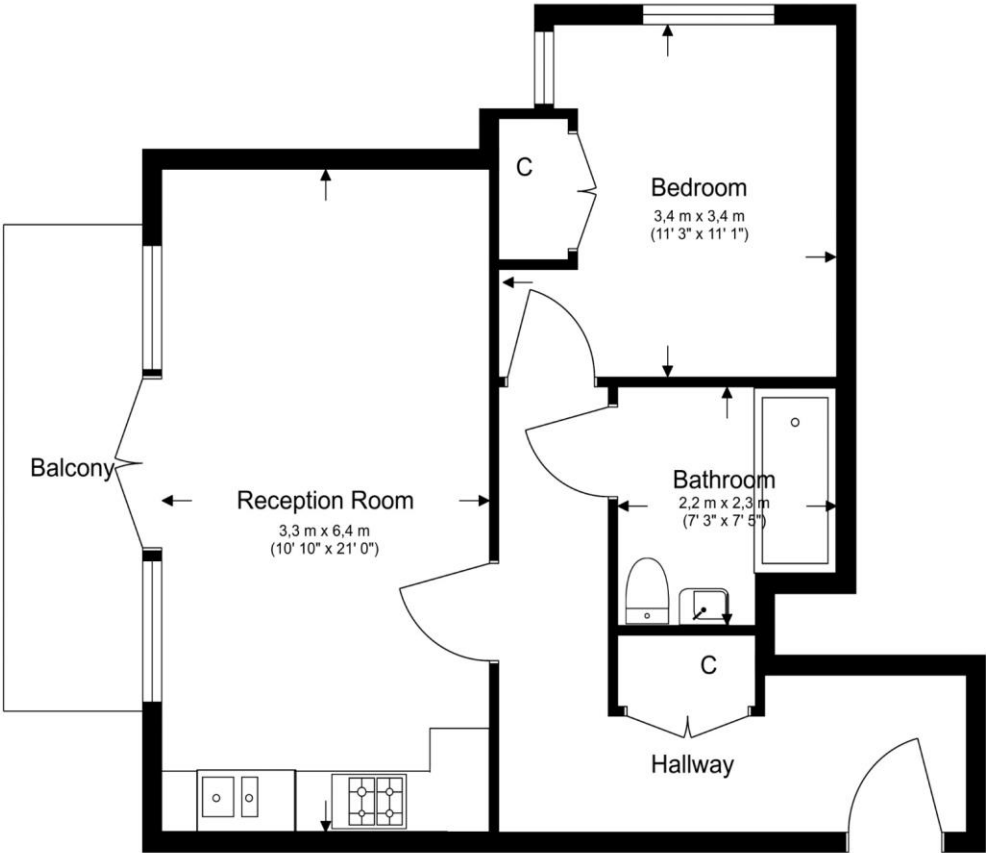
Please note that this property is currently rented, photographs were taken prior to the current tenancy

Property Features:

- 1 Bedroom
- 14th Floor
- 506 Square Feet (Approx.)
- Large Balcony, Eco Garden and Pond
- Lift
- Modern and Spacious
- Panoramic City Views
- Area of Huge Regeneration Near Rathbone Market
- Perfect for Living/Investment
- Canning Town Jubilee and DLR



Total Gross Internal Area
47.0 Sq/m - 506 Sq/ft



Floor Plan measurements are approximate and are for illustrative purposes only. While we do not doubt the floor plans accuracy, we make no guarantee, warranty or representation as to the accuracy and completeness of the floor plan.

Energy Efficiency Rating		
	Current	Potential
Very energy efficient - lower running costs		
(92+) A		
(81-91) B		
(69-80) C	79	82
(55-68) D		
(39-54) E		
(21-38) F		
(1-20) G		
Not energy efficient - higher running costs		
England, Scotland & Wales	EU Directive 2002/91/EC	

Terms & Conditions:

These particulars are for guidance purposes only and do not form part of an offer or contract.

Asking Price:	£340,000
Tenure:	Leasehold Expires 01/11/2160 Approximately 136 Years Remaining
Ground Rent:	£250.00 (per annum) 2024
Service Charge:	£3,028.20 approx. (per annum) 2024

Viewings:

All viewings are by appointment only through our Canary Wharf Office.

Our reference: BEA200126

T: 020 8036 3200
E: canarywharf.sales@benhams.com
W: www.benhams.com

Disclaimer: These particulars are for guidance purposes only and do not form part of an offer or contract. Whilst care has been taken in their preparation, Benham and Reeves or the vendor shall not be held responsible for any inaccuracies. You should not rely on statements by Benham and Reeves Ltd in the particulars or by word of mouth or in writing as being factually accurate about the property, its condition or its value. Any areas, measurements or distances are approximate. The text, photographs and plans are for guidance only. The photographs appearing in these particulars show only certain parts of the property at the time when the photographs were taken. It should not be assumed that the property has all or any of the necessary planning permission, building regulation consent approval or other required consents for it previous, present or future intended usage. Any intending purchasers must satisfy themselves by inspection or by taking appropriate professional advice. Benham and Reeves Ltd has not rested any of the equipment, fittings or facilities.

London | Canary Wharf | City | Colindale | Dartmouth Park | Ealing | Fulham | Hampstead
Hammersmith | Highgate | Hyde Park | Kensington | Kew | Knightsbridge | Nine Elms
Surrey Quays | Shoreditch | Wembley | Wapping | White City | Woolwich

International | China | Hong Kong | India | Israel | Malaysia | Middle East | Pakistan
Singapore | South Africa | Turkey

