



Chelsea Waterfront, Chelsea, SW10

Asking Price: £3,200,000

 Benham
& Reeves

Chelsea Waterfront, Chelsea, SW10

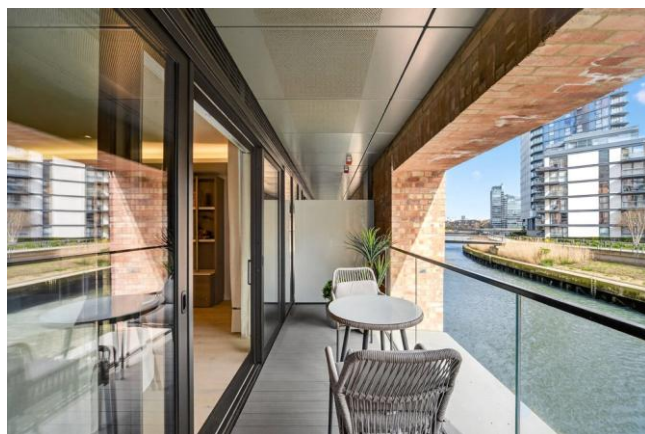
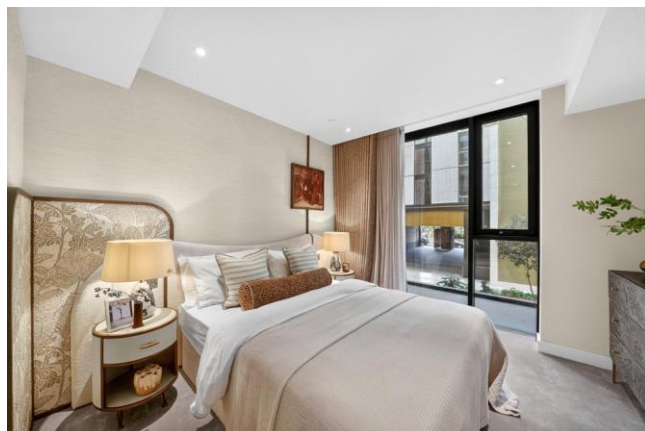
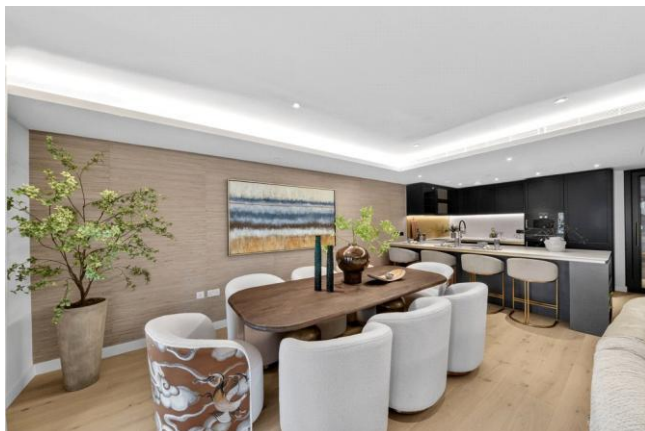
 4 Bedroom (s)  4 Bathroom (s)  Leasehold

This brand-new four-bedroom, four-bathroom apartment spans 1,733 square feet (approximately). The open-plan living room with kitchen is spacious, and the U-shaped kitchen area includes built-in appliances. The living room opens onto the large south-facing balcony, which offers stunning views of the Creek. There are four double bedrooms, three of which include en-suites. The principal bedroom has plenty of built-in wardrobe space and a four-piece bath and shower ensuite, and you also have direct access to the balcony. Along the hallway are a utility room and a family bathroom.

Chelsea Waterfront offers a luxurious riverside lifestyle with 24-hour concierge service, private security, and exclusive resident services. It features premium wellness amenities, including a swimming pool, spa, gym, and beautifully landscaped gardens along the River Thames. With on-site dining, retail spaces, and elegant interiors, it creates a self-contained, high-end living experience in the heart of London.

Chelsea Waterfront is well connected via nearby stations, including the London Underground at Fulham Broadway and rail services from Imperial Wharf.

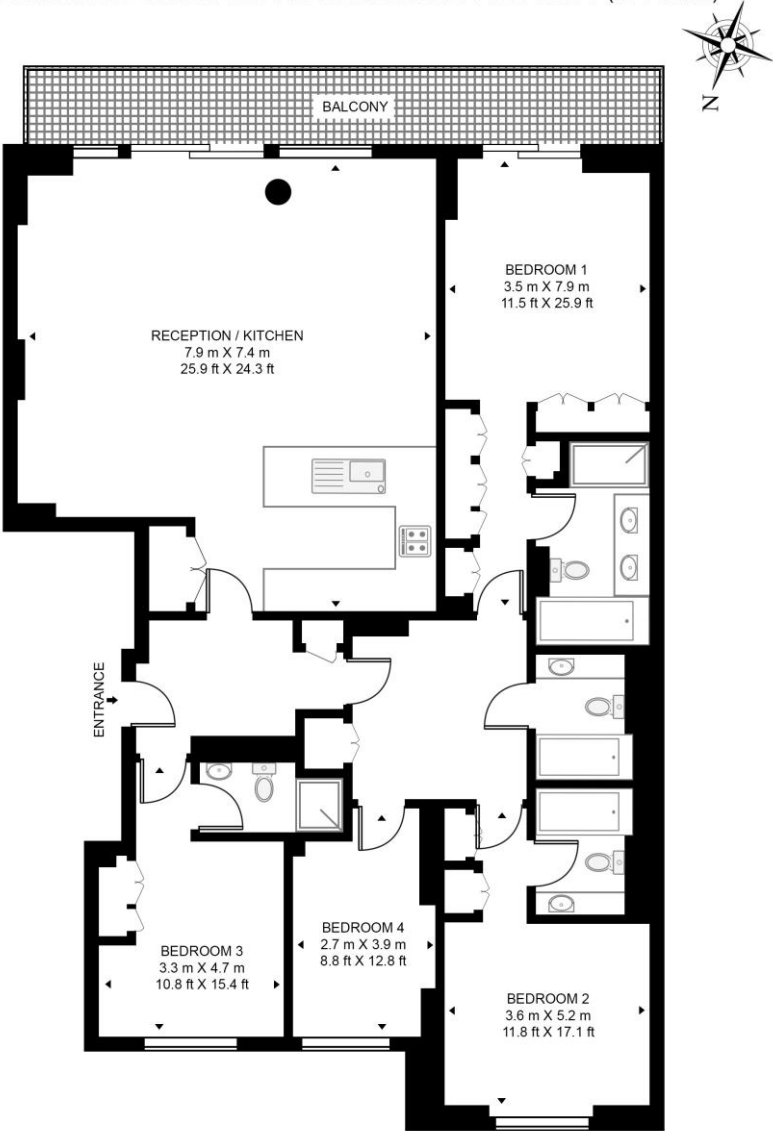




Property Features:

- Four Bedrooms
- Four Bathrooms
- 1733 Square Feet (Approximately)
- First Floor
- Newly Built
- Creek Water Views
- Concierge, Gym, Residents' Lounge
- Fulham Broadway - 0.9 Miles
- Imperial Wharf Station - 0.3 Miles

CHELSEA WATERFRONT, LOTS ROAD
APPROXIMATE GROSS INTERNAL FLOOR AREA 1733 SQ.FT (161 SQ.M)



FIRST FLOOR

This floor plan has been defined by the RICS Code of Measurement. This floor plan and all others are for approximate representative purposes only and upon usage is agreed to as such by the client.
WWW: hdvirtualart.com | TEL: 0203.974.1567 | EMAIL: info@hdvirtualart.com

Terms & Conditions:

These particulars are for guidance purposes only and do not form part of an offer or contract.

Asking Price:	£3,200,000
Tenure:	Leasehold Expires 31/08/2997 Approximately 971 Years Remaining
Ground Rent:	Nil
Service Charge:	£15,597.00 (per annum) (approx.) for the year 2026

Viewings:

All viewings are by appointment only through our Imperial Wharf Office.

Our reference: KEW260035

T: 02032823700

E: imperialwharf.sales@benhams.com

W: www.benhams.com

Disclaimer: These particulars are for guidance purposes only and do not form part of an offer or contract. Whilst care has been taken in their preparation, Benham and Reeves or the vendor shall not be held responsible for any inaccuracies. You should not rely on statements by Benham and Reeves Ltd in the particulars or by word of mouth or in writing as being factually accurate about the property, its condition or its value. Any areas, measurements or distances are approximate. The text, photographs and plans are for guidance only. The photographs appearing in these particulars show only certain parts of the property at the time when the photographs were taken. It should not be assumed that the property has all or any of the necessary planning permission, building regulation consent approval or other required consents for its previous, present or future intended usage. Any intending purchasers must satisfy themselves by inspection or by taking appropriate professional advice. Benham and Reeves Ltd has not rested any of the equipment, fittings or facilities.

London | Canary Wharf | City | Colindale | Dartmouth Park | Ealing | Fulham | Hampstead
Hammersmith | Highgate | Hyde Park | Kensington | Kew | Knightsbridge | Nine Elms
Surrey Quays | Shoreditch | Wembley | Wapping | White City | Woolwich

International | China | Hong Kong | India | Israel | Malaysia | Middle East | Pakistan
Singapore | South Africa | Turkey

