



# Grosvenor Court, Edgware Road, Marylebone, W2

Asking Price: £1,200,000

Benham  
& Reeves

# Grosvenor Court, Edgware Road, Marylebone, W2

 4 Bedroom (s)  2 Bathroom (s)  Leasehold

Set within the sought-after Marylebone location, this spacious four bedroom apartment of approximately 1,183 square feet is positioned on the second floor of the well-regarded Grosvenor Court Mansions, offering an excellent balance of lateral living and practical layout in a prime W2 setting.

The property comprises a generous reception room, ideal for both entertaining and day-to-day living, alongside four well-proportioned bedrooms. A separate kitchen and two bathrooms provide functionality and comfort, making the apartment suitable for both families and investors. The property has been well maintained throughout, allowing for immediate occupation while also offering scope for personalisation if desired. A key advantage is that this property also includes off-street parking.

Situated on the high street, the apartment benefits from immediate access to a wide range of shops, cafés, and local amenities, while being just a short distance from Marble Arch and the renowned shopping of Oxford Street.

The open green spaces of Hyde Park are also within easy reach, providing an ideal escape from city living.

The location is exceptionally well-connected, with excellent transport links from nearby Edgware Road and Marble Arch stations, offering access across London via multiple Underground lines.

This is a fantastic opportunity to acquire a substantial apartment in a well-established mansion block, combining space, convenience, and long-term value in one of central London's most desirable areas.





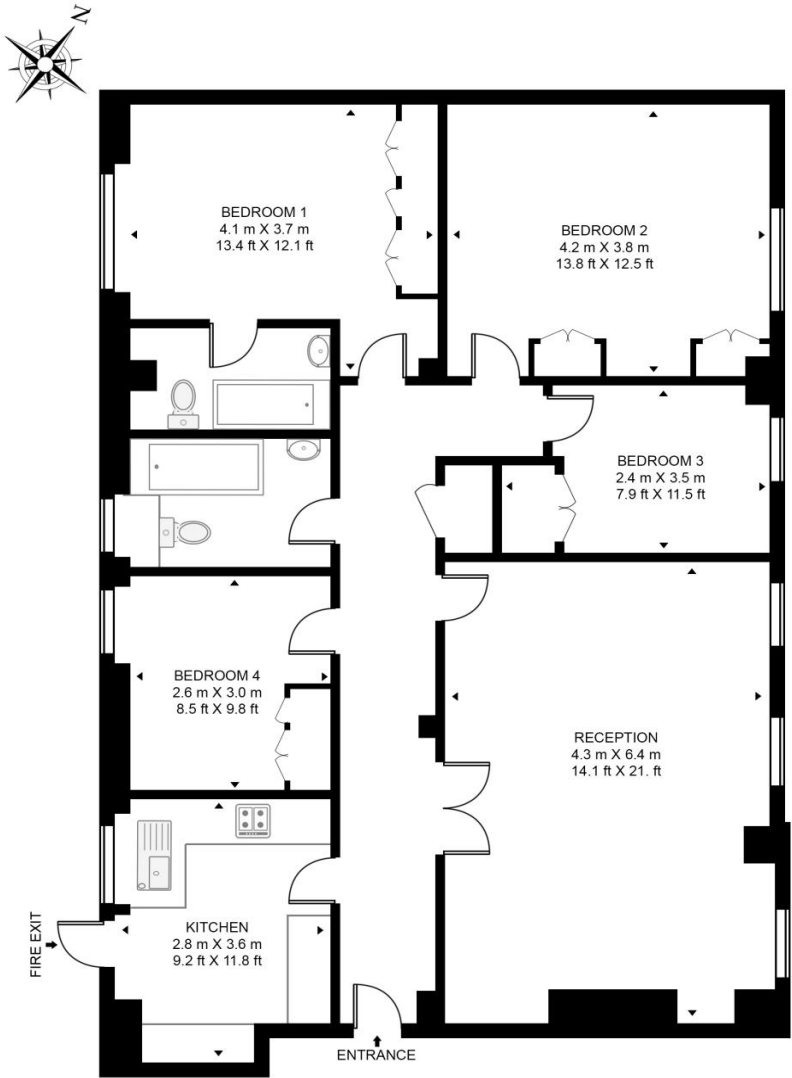
## Property Features:

- Four Bedrooms
- Two Bathrooms
- Second Floor
- 1183 Square Feet (Approx.)
- Daytime Porter/Concierge
- Lift
- Off-Street Parking
- Marble Arch Station (Central Line) 0.2 miles
- Paddington Station (Circle, Hammersmith & City and Elizabeth Line) 0.5 miles



## GROSVENOR COURT MANSIONS

APPROXIMATE GROSS INTERNAL FLOOR AREA 1183 SQ.FT (109.9 SQ.M)



SECOND FLOOR

Score	Energy rating	Current	Potential
92+	A		
81-91	B		
69-80	C	74 C	81 B
55-68	D		
39-54	E		
21-38	F		
1-20	G		

This floor plan has been defined by the RICS Code of Measurement. This floor plan and all others are for approximate representative purposes only and upon usage is agreed to as such by the client.  
 WWW: hdvirtualart.com | TEL: 0203.974.1567 | EMAIL: info@hdvirtualart.com

## Terms & Conditions:

These particulars are for guidance purposes only and do not form part of an offer or contract.

Asking Price:	£1,200,000
Tenure:	Leasehold Expires 24/12/2107 Approximately 81 Years Remaining
Ground Rent:	Nil
Service Charge:	£13,000.00 (per annum) for the year 2026
Anticipated Rent:	£5,000.00 pcm Approx. 5.0% Yield

## Viewings:

All viewings are by appointment only through our Kensington Office.

Our reference: KEN260066

T: 020 7938 3522

E: [kensington.sales@benhams.com](mailto:kensington.sales@benhams.com)

W: [www.benhams.com](http://www.benhams.com)

Disclaimer: These particulars are for guidance purposes only and do not form part of an offer or contract. Whilst care has been taken in their preparation, Benham and Reeves or the vendor shall not be held responsible for any inaccuracies. You should not rely on statements by Benham and Reeves Ltd in the particulars or by word of mouth or in writing as being factually accurate about the property, its condition or its value. Any areas, measurements or distances are approximate. The text, photographs and plans are for guidance only. The photographs appearing in these particulars show only certain parts of the property at the time when the photographs were taken. It should not be assumed that the property has all or any of the necessary planning permission, building regulation consent approval or other required consents for its previous, present or future intended usage. Any intending purchasers must satisfy themselves by inspection or by taking appropriate professional advice. Benham and Reeves Ltd has not rested any of the equipment, fittings or facilities.

London | Canary Wharf | City | Colindale | Dartmouth Park | Ealing | Fulham | Hampstead  
Hammersmith | Highgate | Hyde Park | Kensington | Kew | Knightsbridge | Nine Elms  
Surrey Quays | Shoreditch | Wembley | Wapping | White City | Woolwich

International | China | Hong Kong | India | Israel | Malaysia | Middle East | Pakistan  
Singapore | South Africa | Turkey

