



# Trevor Place, Knightsbridge, SW7

Price Reduced to: £5,800,000

Benham  
& Reeves



# Trevor Place, Knightsbridge, SW7

 6 Bedroom (s)  4 Bathroom (s)  Freehold

A late-Georgian terraced house built circa 1830's in one of London's premier roads in the heart of Knightsbridge, between Brompton Road and Hyde Park

Extending to approximately 2825 square feet (approx.), this fabulous six bedroom, four bathroom family home is offered in excellent decorative condition and is ideal for lavish entertaining with a spacious 38' double reception room on the upper ground floor, featuring privacy glass and leading to a sun-drenched private walled garden.

The lower ground floor hosts a spacious dining room served by a fully-fitted kitchen and a staff bedroom with en-suite facilities.

Trevor Place is a quiet side street in the centre of highly prized Knightsbridge, with Hyde Park at one end and Harrods, Sloane Street and Beauchamp Place at the other end.

- Six Bedrooms
- Four Bathroom
- Two Washroom
- Over four floors
- 2,966 Square Feet (Approx.)
- Modern and Spacious
- Knightsbridge Station (0.3 miles)
- Hyde Park Corner (0.6 miles)



# Trevor Place, Knightsbridge, SW7

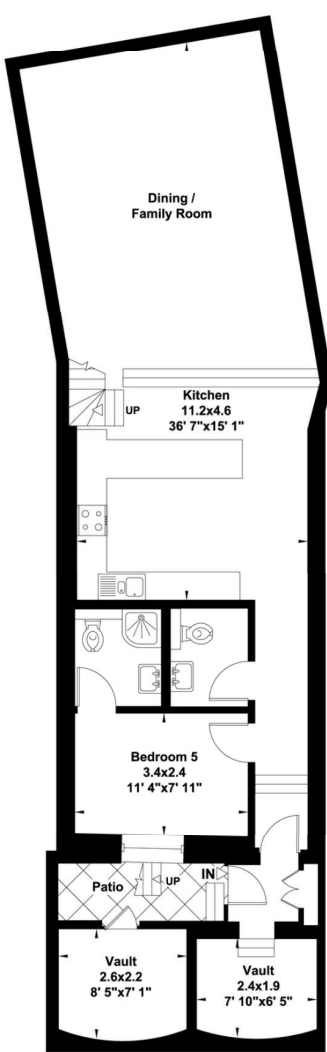




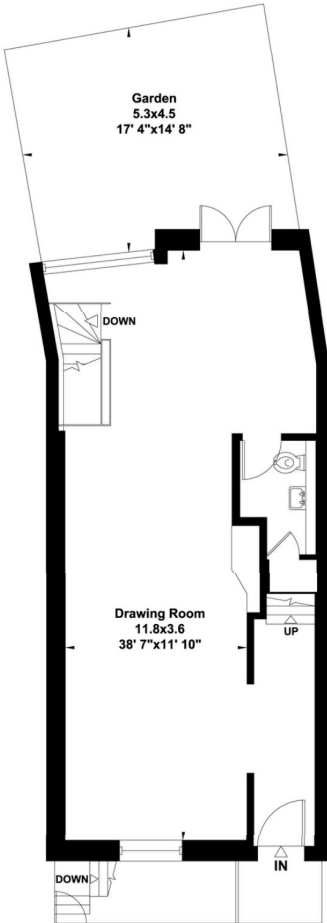
# Trevor Place, Knightsbridge, SW7



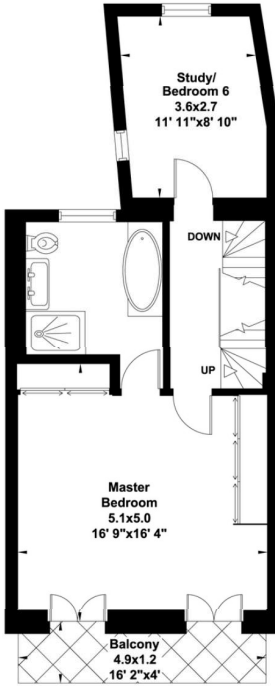
Gross internal area (approx.)  
276 Sq m (2966 Sq ft) Including Vaults and Under 1.5m High  
263 Sq m (2825 Sq ft) Excluding Vaults and Under 1.5m High



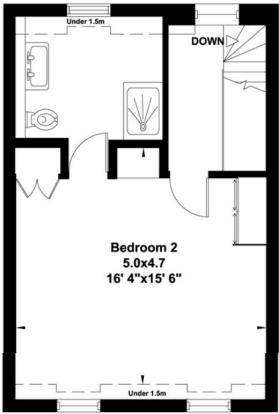
Lower Ground Floor



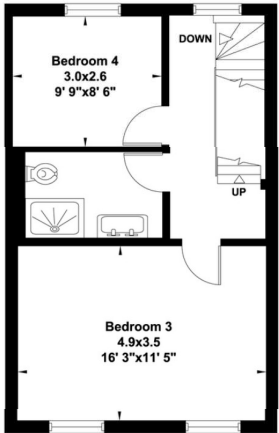
Upper Ground Floor



First Floor



Third Floor



Second Floor

Energy Efficiency Rating		
	Current	Potential
Very energy efficient - lower running costs		
(92+) <b>A</b>		
(81-91) <b>B</b>		82
(69-80) <b>C</b>		
(55-68) <b>D</b>	66	
(39-54) <b>E</b>		
(21-38) <b>F</b>		
(1-20) <b>G</b>		
Not energy efficient - higher running costs		
England, Scotland & Wales		EU Directive 2002/91/EC

## Terms & Conditions:

These particulars are for guidance purposes only and do not form part of an offer or contract.

Price Reduced     £5,800,000  
to:

Tenure:                Freehold  
                             Expires  
                             Approximately 0 Years Remaining

Ground Rent:        £0.00 (per annum)  
                             Nil

Service Charge:     £0.00 (per annum)  
                             Nil

Anticipated Rent:   £13,000.00 pcm  
                             Approx. 2.7% Yield

## Viewings:

All viewings are by appointment only through our Kensington Office.

Our reference: KEN240131

T: 020 7938 3522  
E: [kensington.sales@benhams.com](mailto:kensington.sales@benhams.com)  
W: [www.benhams.com](http://www.benhams.com)

Disclaimer: These particulars are for guidance purposes only and do not form part of an offer or contract. Whilst care has been taken in their preparation, Benham and Reeves or the vendor shall not be held responsible for any inaccuracies. You should not rely on statements by Benham and Reeves Ltd in the particulars or by word of mouth or in writing as being factually accurate about the property, its condition or its value. Any areas, measurements or distances are approximate. The text, photographs and plans are for guidance only. The photographs appearing in these particulars show only certain parts of the property at the time when the photographs were taken. It should not be assumed that the property has all or any of the necessary planning permission, building regulation consent approval or other required consents for it previous, present or future intended usage. Any intending purchasers must satisfy themselves by inspection or by taking appropriate professional advice. Benham and Reeves Ltd has not rested any of the equipment, fittings or facilities.

London | Canary Wharf | City | Colindale | Dartmouth Park | Ealing | Fulham | Hampstead  
Hammersmith | Highgate | Hyde Park | Kensington | Kew | Knightsbridge | Nine Elms  
Surrey Quays | Shoreditch | Wembley | Wapping | White City | Woolwich

International | China | Hong Kong | India | Israel | Malaysia | Middle East | Pakistan  
Singapore | South Africa | Turkey

