

Bond Mansions , Portobello Square, Notting Hill

£700,000

🏠 1 Bedroom(s) 🚿 1 Bathroom(s) 🔑 Leasehold

*** Off Plan. Completion Autumn 2019, Not Available On Help To Buy*** Well designed one bedroom, one bathroom apartment located on the sixth floor of Bond Mansions, part of the award winning Portobello Square development. Spanning 545 square feet (approx.) the apartment comprises; one large bedroom with fitted wardrobes, one bathroom, open planning living / dining and kitchen area, with a ba...[Read more](#)

Visit <https://www.benhams.com/property-for-sale/bond-mansions-w10/16246039/> for full details

For more information about this property, please call our Sales office on

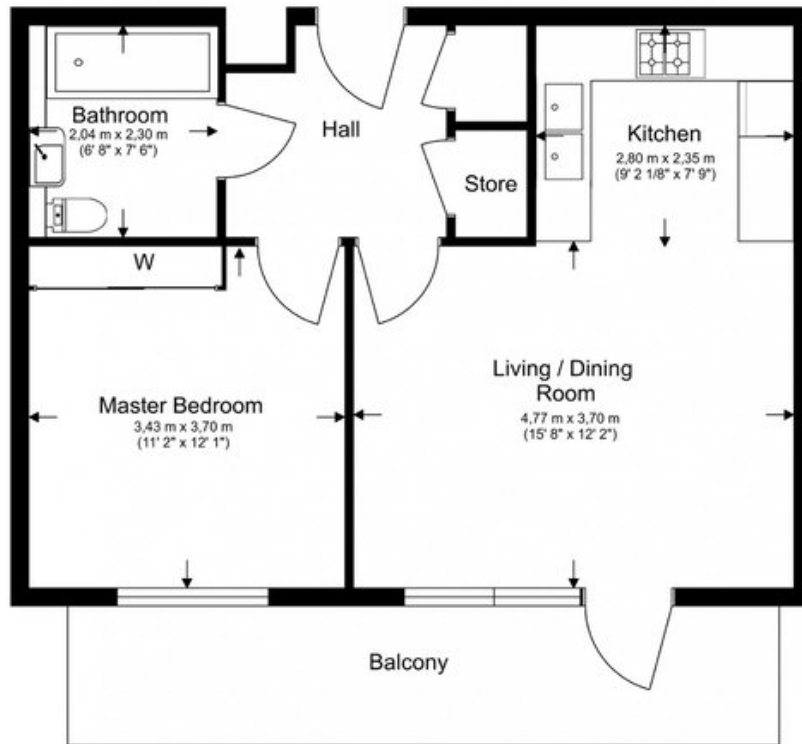
020 3280 6400

Sales Office
5 Thackeray Street, Kensington, London
W8 5ET
<https://www.benhams.com>



Floor plan

Total Gross Internal Area
50.70 Sq/m - 545.7 Sq/ft



Floor Plan measurements are approximate and are for illustrative purposes only. While we do not doubt the floor plans accuracy, we make no guarantee, warranty or representation as to the accuracy and completeness of the floor plan.

Disclaimer: these particulars are for guidance purposes only and do not form part of an offer or contract. Whilst care has been taken in their preparation, Benham and Reeves or the vendor shall not be held responsible for any inaccuracies. You should not rely on statements by Benham and Reeves Ltd in the particulars or by word of mouth or in writing as being factually accurate about the property, its condition or its value. Any areas, measurements or distances are approximate. The text, photographs and plans are for guidance only. The photographs appearing in these particulars show only certain parts of the property at the time when the photographs were taken. It should not be assumed that the property has all or any of the necessary planning permission, building regulation consent approval or other required consents for its previous, present or future intended usage. Any intending purchasers must satisfy themselves by inspection or by taking appropriate professional advice. Benham and Reeves Ltd has not tested any of the equipment, fittings or facilities.