



Bridges Court Road, Battersea, SW11

Price Reduced to: £410,000

 Benham
& Reeves

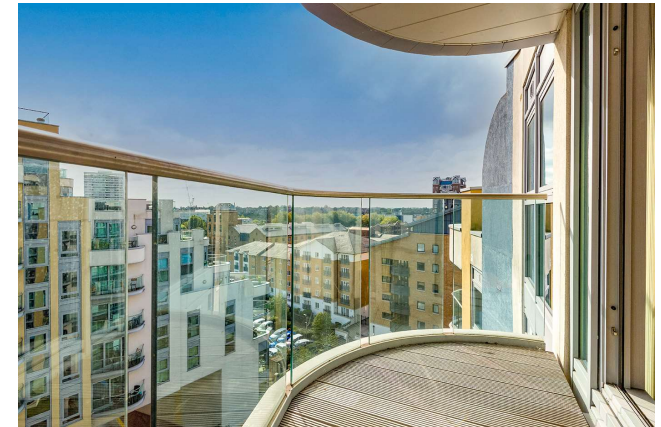
Bridges Court Road, Battersea, SW11

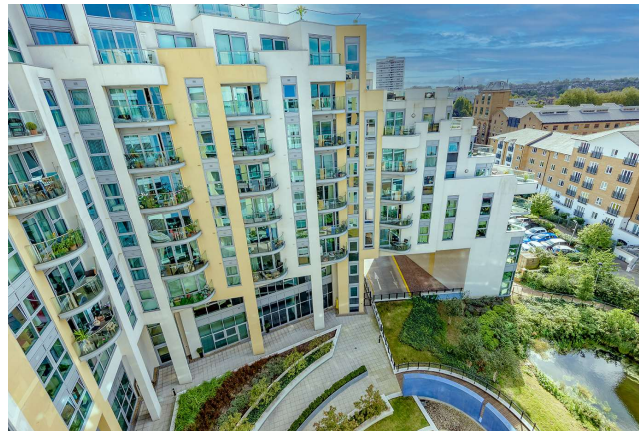
 1 Bedroom (s)  1 Bathroom (s)  Leasehold

This bright one bedroom apartment, with an underground parking space, spans 475 square feet (approx.) and is situated on the seventh floor of the popular Riverside Development, Bridges Wharf.

The apartment comprises of one generously spaced bedroom with fitted wardrobe, bright open plan kitchen/living and dining area with direct access to the private balcony and the bathroom is well designed and modern.

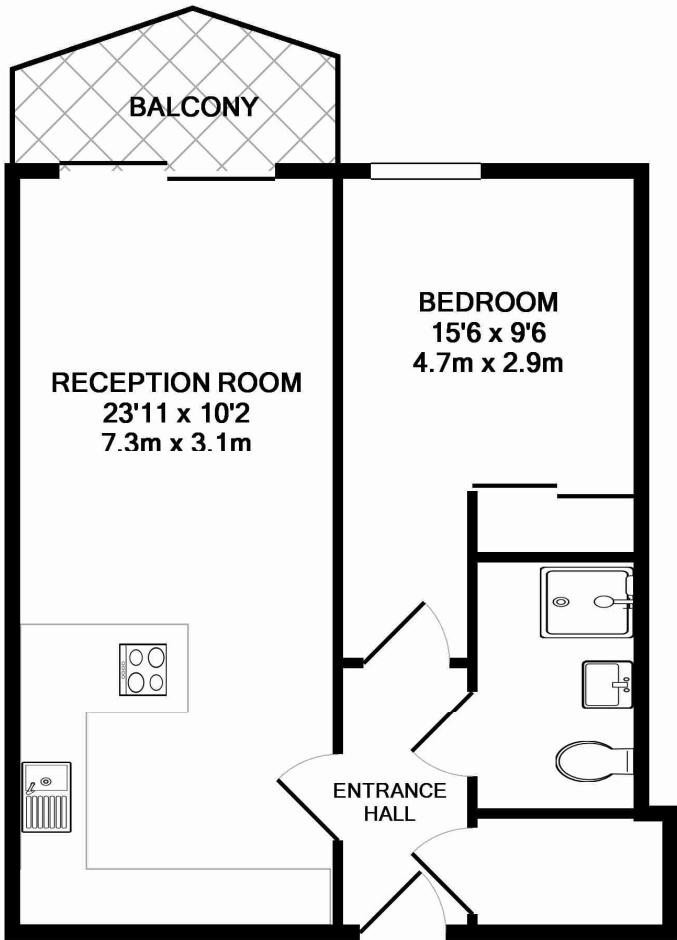
The development benefits from a 24-hour concierge, communal lift and on-site secure parking. Battersea is close by with many open spaces, shops and restaurants. The property is located within walking distance to Clapham Junction station - one of London's major railway stations, offering a variety of services around and in and out of London.





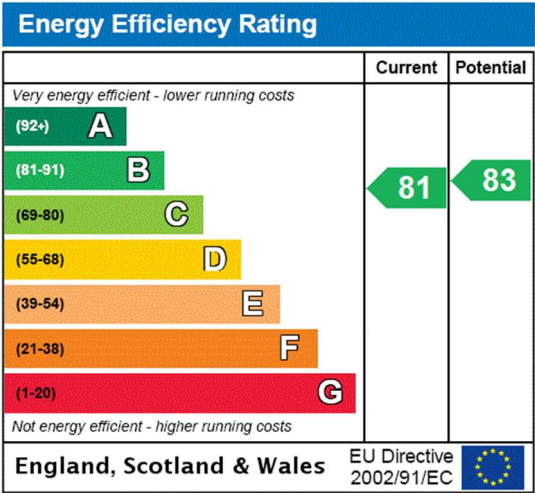
Property Features:

- One Bedroom
- One Bathroom
- Seventh Floor
- 475 Square Feet (Approx.)
- Balcony
- 24 Hour Concierge
- Underground Parking
- Clapham Junction Station (Zone 2)



VICENTIA COURT, BRIDGES COURT ROAD, SW11 3GY
TOTAL APPROX. FLOOR AREA 475 SQ.FT. (44.2 SQ.M.)

Whilst every attempt has been made to ensure the accuracy of the floor plan contained here, measurements of doors, windows, rooms and any other items are approximate and no responsibility is taken for any error, omission, or mis-statement. This plan is for illustrative purposes only and should be used as such by any prospective purchaser. The services, systems and appliances shown have not been tested and no guarantee as to their operability or efficiency can be given
Made with Metropix ©2014



Terms & Conditions:

These particulars are for guidance purposes only and do not form part of an offer or contract.

Price Reduced to:	£410,000
Tenure:	Leasehold Expires 15/02/2157 Approximately 133 Years Remaining
Ground Rent:	£250.00 (per annum) for the year 2023
Service Charge:	£3,880.06 (per annum) for the year 2023
Anticipated Rent:	£2,150.00 pcm Approx. 6.3% Yield

Viewings:

All viewings are by appointment only through our Nine Elms Office.

Our reference: NIN220172

T: 020 3282 3700
E: nineelms.sales@benhams.com
W: www.benhams.com

Disclaimer: These particulars are for guidance purposes only and do not form part of an offer or contract. Whilst care has been taken in their preparation, Benham and Reeves or the vendor shall not be held responsible for any inaccuracies. You should not rely on statements by Benham and Reeves Ltd in the particulars or by word of mouth or in writing as being factually accurate about the property, its condition or its value. Any areas, measurements or distances are approximate. The text, photographs and plans are for guidance only. The photographs appearing in these particulars show only certain parts of the property at the time when the photographs were taken. It should not be assumed that the property has all or any of the necessary planning permission, building regulation consent approval or other required consents for it previous, present or future intended usage. Any intending purchasers must satisfy themselves by inspection or by taking appropriate professional advice. Benham and Reeves Ltd has not rested any of the equipment, fittings or facilities.

London | Canary Wharf | City | Colindale | Dartmouth Park | Ealing | Fulham | Hampstead
Hammersmith | Highgate | Hyde Park | Kensington | Kew | Knightsbridge | Nine Elms
Surrey Quays | Shoreditch | Wembley | Wapping | White City | Woolwich

International | China | Hong Kong | India | Israel | Malaysia | Middle East | Pakistan
Singapore | South Africa | Turkey

