



City North, Finsbury Park, London £720,000

 2 Bedroom(s)  2 Bathroom(s)  Leasehold

A large two bedroom, two bathroom, two balcony apartment situated on the 17th floor of the 'Rectangular Tower' of the new Telford Homes development City North. The apartment spans 883 Square Feet (Approx.) and comprises; large open plan reception leading onto private balcony with views of Alexandra Palace and Hampstead. The kitchen has fully integrated appliances thro...[Read more](#)

Visit <https://www.benhams.com/property-for-sale/city-north-n4/16984061/> for full details

For more information about this property, please call our office on

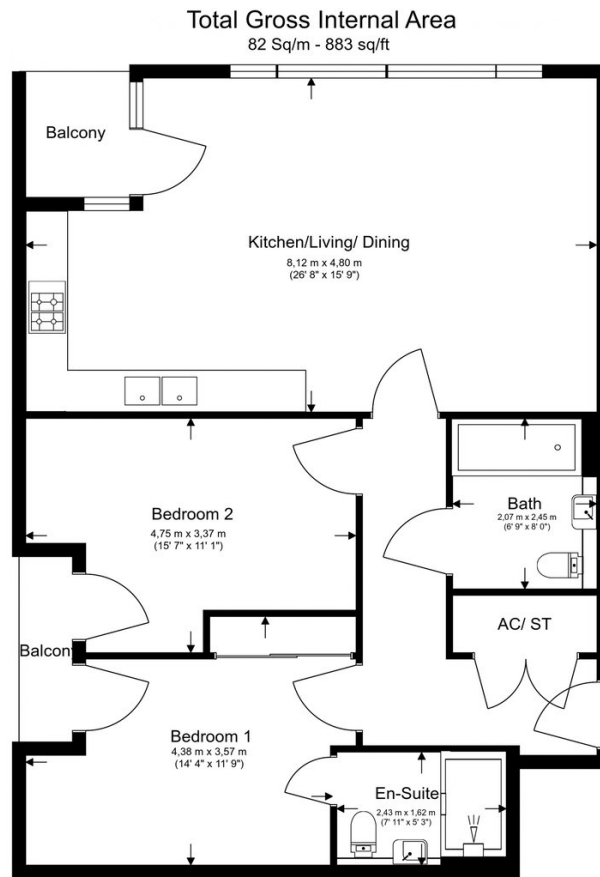
Office

, ,

<https://www.benhams.com>



Floor plan



Floor Plan measurements are approximate and are for illustrative purposes only. While we do not doubt the floor plans accuracy, we make no guarantee, warranty or representation as to the accuracy and completeness of the floor plan.

Disclaimer: these particulars are for guidance purposes only and do not form part of an offer or contract. Whilst care has been taken in their preparation, Benham and Reeves or the vendor shall not be held responsible for any inaccuracies. You should not rely on statements by Benham and Reeves Ltd in the particulars or by word of mouth or in writing as being factually accurate about the property, its condition or its value. Any areas, measurements or distances are approximate. The text, photographs and plans are for guidance only. The photographs appearing in these particulars show only certain parts of the property at the time when the photographs were taken. It should not be assumed that the property has all or any of the necessary planning permission, building regulation consent approval or other required consents for its previous, present or future intended usage. Any intending purchasers must satisfy themselves by inspection or by taking appropriate professional advice. Benham and Reeves Ltd has not tested any of the equipment, fittings or facilities.