

Dashwood Apartments, Dickens Yard, Longfield Avenue £950,000

🔑 2 Bedroom(s) 🚿 2 Bathroom(s) 🗝️ Leasehold

A stunning 2 bedroom, 2 bathroom apartment situated in Dickens Yard within Dashwood House. This sixth floor apartment comprises an open plan reception room and floor-to-ceiling windows that lead out to a private balcony. The property spans a sizeable 965 square feet and consists of a fully fitted modern kitchen, two bedrooms with storage space and a modern bathroom. The development benefits from...[Read more](#)

Visit <https://www.benhams.com/property-for-sale/dashwood-apartments-w5/16246269/> for full details

For more information about this property, please call our Sales office on

020 3280 6400

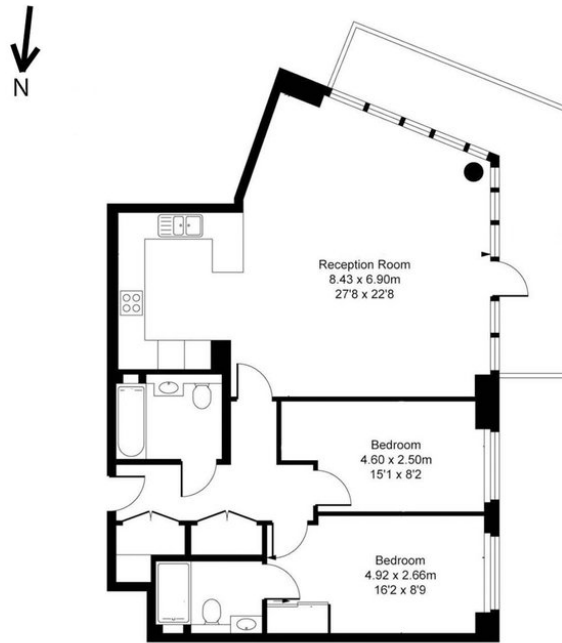
Sales Office
5 Thackeray Street, Kensington, London
W8 5ET
<https://www.benhams.com>



Floor plan

78DH-DY-E-W5

Approx Gross Area: 90 sq m / 965 sq ft



Whilst every attempt has been made to ensure the accuracy of the floor plan contained here, measurements of doors, windows, rooms and any other items are approximate and no responsibility is taken for any error, omission, or mis-statement. This plan is for illustrative purposes only and should be used as such by any prospective purchaser. The services, systems and appliances shown have not been tested and no guarantee as to their operability or efficiency can be given
Made with Metropix ©2015

Energy performance certificates

| Energy Efficiency Rating | | |
|--|-------------------------|-----------|
| | Current | Potential |
| <i>Very energy efficient - lower running costs</i> | | |
| (92-100) A | | |
| (81-91) B | | |
| (69-80) C | | |
| (55-68) D | | |
| (39-54) E | | |
| (21-38) F | | |
| (1-20) G | | |
| <i>Not energy efficient - higher running costs</i> | | |
| | 82 | 82 |
| England, Scotland & Wales | EU Directive 2002/91/EC | |

| Environmental Impact (CO ₂) Rating | | |
|---|-------------------------|-----------|
| | Current | Potential |
| <i>Very environmentally friendly - lower CO₂ emissions</i> | | |
| (92-100) A | | |
| (81-91) B | | |
| (69-80) C | | |
| (55-68) D | | |
| (39-54) E | | |
| (21-38) F | | |
| (1-20) G | | |
| <i>Not environmentally friendly - higher CO₂ emissions</i> | | |
| | 83 | 83 |
| England, Scotland & Wales | EU Directive 2002/91/EC | |

Disclaimer: these particulars are for guidance purposes only and do not form part of an offer or contract. Whilst care has been taken in their preparation, Benham and Reeves or the vendor shall not be held responsible for any inaccuracies. You should not rely on statements by Benham and Reeves Ltd in the particulars or by word of mouth or in writing as being factually accurate about the property, its condition or its value. Any areas, measurements or distances are approximate. The text, photographs and plans are for guidance only. The photographs appearing in these particulars show only certain parts of the property at the time when the photographs were taken. It should not be assumed that the property has all or any of the necessary planning permission, building regulation consent approval or other required consents for its previous, present or future intended usage. Any intending purchasers must satisfy themselves by inspection or by taking appropriate professional advice. Benham and Reeves Ltd has not tested any of the equipment, fittings or facilities.