



Goodchild Road, Woodbury Down, London £540,000

 2 Bedroom(s)  2 Bathroom(s)  Leasehold

A contemporary two-bedroom apartment located on the fifth floor in the Waterside Development, Woodberry Down. Spanning an approximate 719 square feet, this apartment is light throughout and comprises of; a large open plan reception area leading on to private balcony overlooking beautiful communal gardens and a fully fitted kitchen with integrated appliances.

This well-presented apartment ...[Read more](#)

Visit <https://www.benhams.com/property-for-sale/goodchild-road-n4/20494831/> for full details

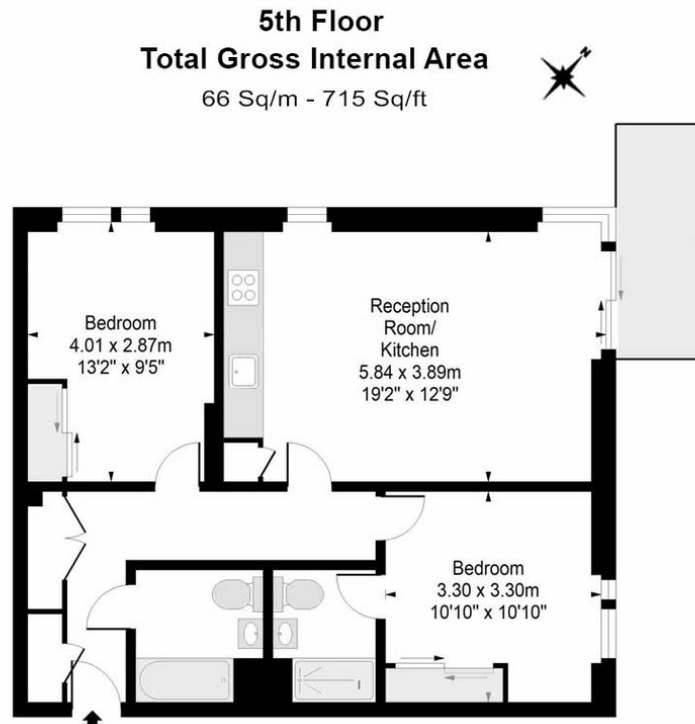
For more information about this property, please call our London Sales office on

020 3280 6400

London Sales Office
2nd Floor, Harbour Exchange 5, Canary Wharf, London
E14 9GE
<https://www.benhams.com>

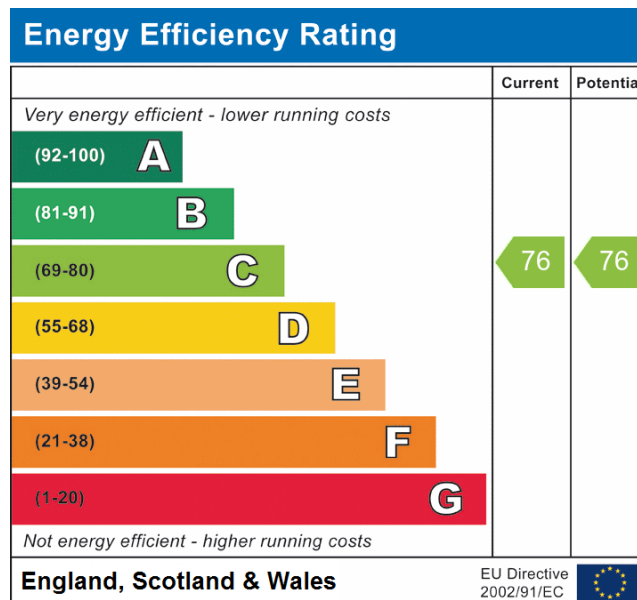


Floor plan



Floor Plan measurements are approximate and are for illustrative purposes only. While we do not doubt the floor plans accuracy, we make no guarantee, warranty or representation as to the accuracy and completeness of the floor plan.

Energy performance certificates



Disclaimer: these particulars are for guidance purposes only and do not form part of an offer or contract. Whilst care has been taken in their preparation, Benham and Reeves or the vendor shall not be held responsible for any inaccuracies. You should not rely on statements by Benham and Reeves Ltd in the particulars or by word of mouth or in writing as being factually accurate about the property, its condition or its value. Any areas, measurements or distances are approximate. The text, photographs and plans are for guidance only. The photographs appearing in these particulars show only certain parts of the property at the time when the photographs were taken. It should not be assumed that the property has all or any of the necessary planning permission, building regulation consent approval or other required consents for its previous, present or future intended usage. Any intending purchasers must satisfy themselves by inspection or by taking appropriate professional advice. Benham and Reeves Ltd has not tested any of the equipment, fittings or facilities.