



Royal Mint Street, Tower Hill, E1

Asking Price: £475,000

Benham
& Reeves

Royal Mint Street, Tower Hill, E1

 1 Bedroom (s)  1 Bathroom (s)  Leasehold

Set within Royal Mint Gardens. This luxury apartment has been exceptionally designed for idyllic city living located on the 7th floor, spanning an approximate 405 Square feet. Boasting a Timber floors finish throughout and a high specification featuring LED mood lighting, underfloor heating, and comfort cooling, zonally controlled from a central touch screen control panel.

Apartment comprises of living area, semi open plan kitchen fitted with fully integrated Siemens appliances and composite stone worktops. Bespoke bathroom finished with porcelain walls and floors, custom built vanity counter with natural stone countertop, mist free mirror and chrome heated towel rail.

Complemented by a dedicated 24hr concierge. Residents at Royal Mint Gardens benefit from exclusive access to wellness centre featuring - heated pool & jacuzzi, fully equipped gym, Yoga / dance studio & treatment room. Residents lounge, cinema / screening room, games / recreation room and landscaped courtyard and roof terrace.

Superbly connected for transport links and amenities. The apartment is just minutes of Tower Hill (Underground), Tower Gateway (DLR) & Fenchurch Street (mainline railway) stations. Within a short walk into the City and easy reach to the amenities of famous Spitalfields market, vibrant Shoreditch & trendy Brick Lane.



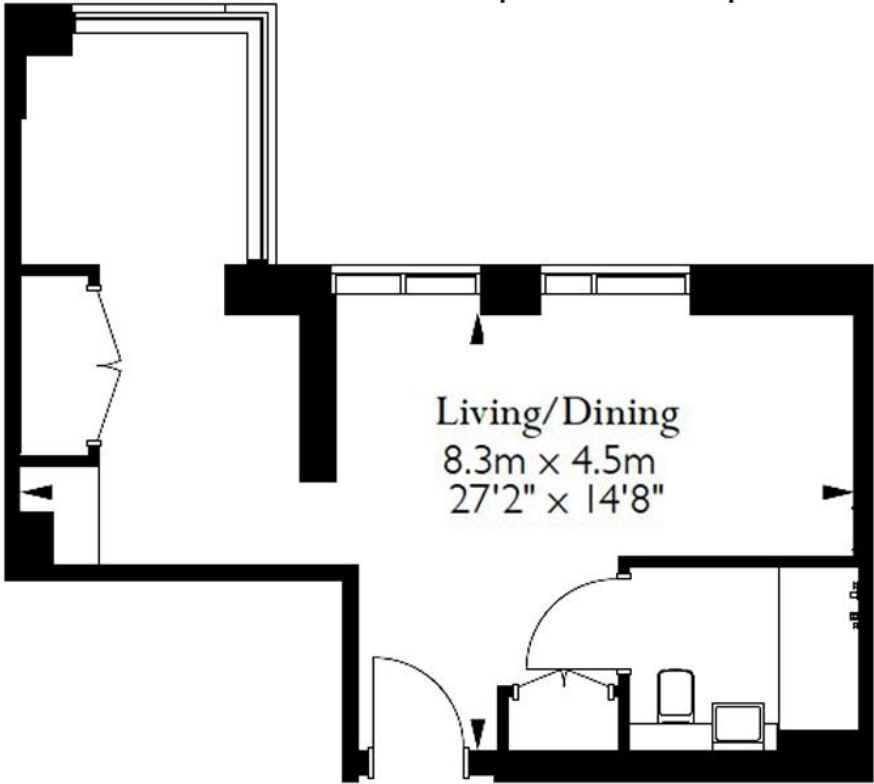


Property Features:

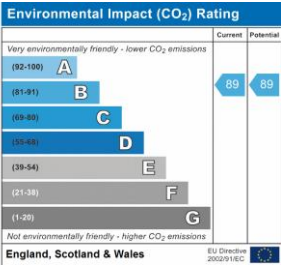
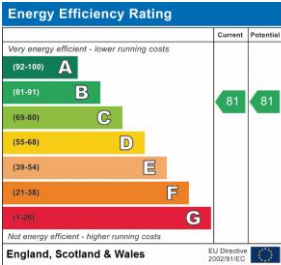
- Modern Studio Apartment
- One Bespoke Bathroom
- 405 Square Feet (Approx,)
- 7th Floor
- Integrated Siemens Appliances
- Underfloor Heating & Comfort Cooling
- Wellness Centre On Site
- Fully Equipped Gym
- Residents' Lounge and Gaming Room
- Tower Hill Underground Station (Zone 1)



Total Gross Internal Area
38 Sq/m - 405 Sq/ft



Floor Plan measurements are approximate and are for illustrative purposes only. While we do not doubt the floor plans accuracy, we make no guarantee, warranty or representation as to the accuracy and completeness of the floor plan.



Terms & Conditions:

These particulars are for guidance purposes only and do not form part of an offer or contract.

Asking Price:	£475,000
Tenure:	Leasehold Expires 02/05/3009 Approximately 985 Years Remaining
Ground Rent:	£400 2024
Service Charge:	£3,484 approx. (per annum) 2024

Viewings:

All viewings are by appointment only through our Canary Wharf Office.

Our reference: BEA200142

T: 020 8036 3200
E: canarywharf.sales@benhams.com
W: www.benhams.com

Disclaimer: These particulars are for guidance purposes only and do not form part of an offer or contract. Whilst care has been taken in their preparation, Benham and Reeves or the vendor shall not be held responsible for any inaccuracies. You should not rely on statements by Benham and Reeves Ltd in the particulars or by word of mouth or in writing as being factually accurate about the property, its condition or its value. Any areas, measurements or distances are approximate. The text, photographs and plans are for guidance only. The photographs appearing in these particulars show only certain parts of the property at the time when the photographs were taken. It should not be assumed that the property has all or any of the necessary planning permission, building regulation consent approval or other required consents for its previous, present or future intended usage. Any intending purchasers must satisfy themselves by inspection or by taking appropriate professional advice. Benham and Reeves Ltd has not rested any of the equipment, fittings or facilities.

London | Canary Wharf | City | Colindale | Dartmouth Park | Ealing | Fulham | Hampstead
Hammersmith | Highgate | Hyde Park | Kensington | Kew | Knightsbridge | Nine Elms
Surrey Quays | Shoreditch | Wembley | Wapping | White City | Woolwich

International | China | Hong Kong | India | Israel | Malaysia | Middle East | Pakistan
Singapore | South Africa | Turkey

