



Sirius House, Seafarer Way, Surrey Quays £400,000

🏠 1 Bedroom(s) 🚿 1 Bathroom(s) 🔑 Leasehold

This modern one bedroom apartment spans 429 square feet (approx.) is situated on the sixth floor in Sirius House, part of the Marine Wharf development. The apartment consists of an open plan living area with a space for dining, private balcony accessed via floor-to-ceiling windows, and a fully fitted kitchen with Bosch appliances. There is a double bedroom with built-in storage, and a bathroom ...[Read more](#)

Visit <https://www.benhams.com/property-for-sale/sirius-house-seafarer-way-se16/18257215/> for full details

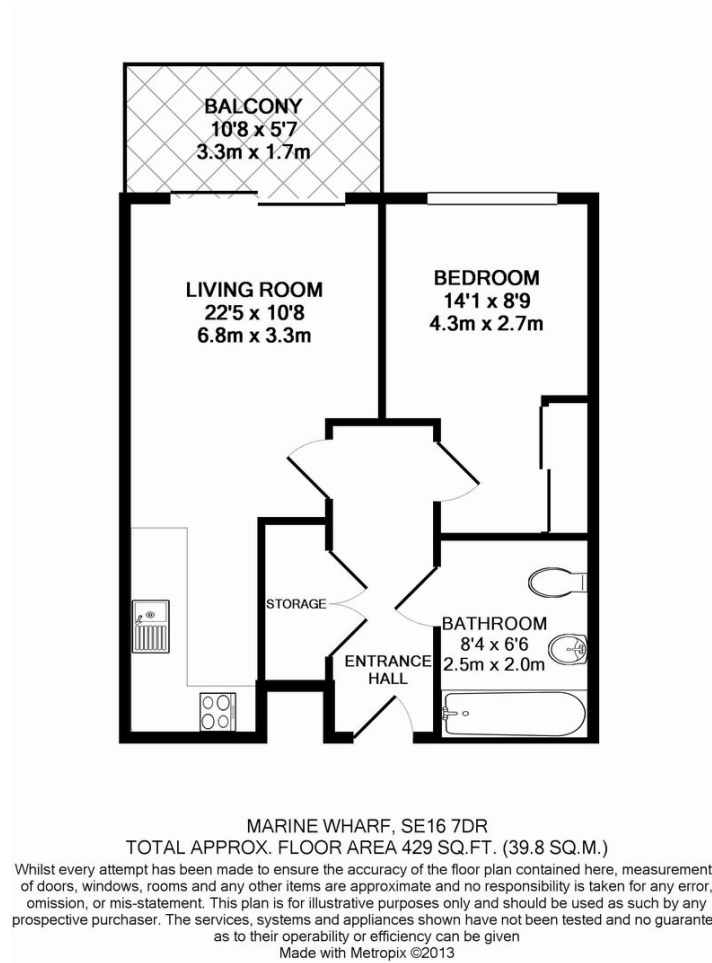
For more information about this property, please call our Sales office on

020 3280 6400

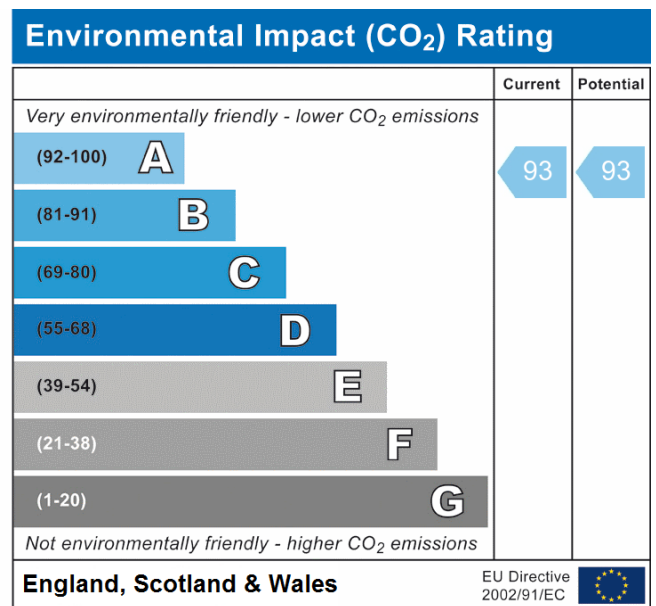
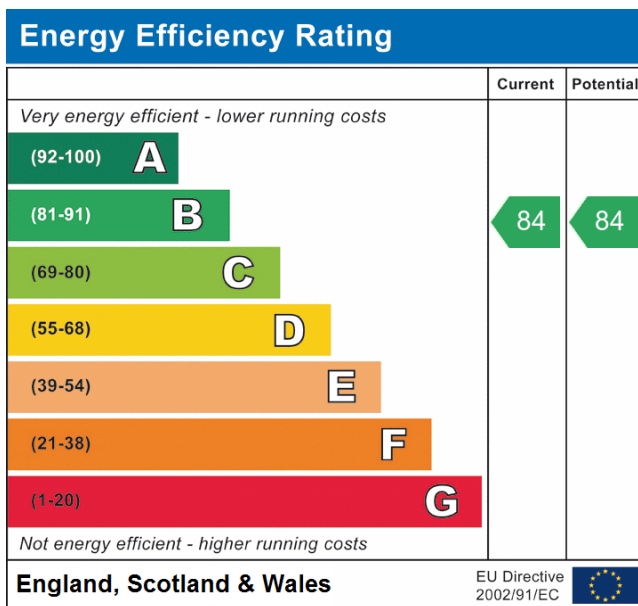
Sales Office
5 Thackeray Street, Kensington, London
W8 5ET
<https://www.benhams.com>



Floor plan



Energy performance certificates



Disclaimer: these particulars are for guidance purposes only and do not form part of an offer or contract. Whilst care has been taken in their preparation, Benham and Reeves or the vendor shall not be held responsible for any inaccuracies. You should not rely on statements by Benham and Reeves Ltd in the particulars or by word of mouth or in writing as being factually accurate about the property, its condition or its value. Any areas, measurements or distances are approximate. The text, photographs and plans are for guidance only. The photographs appearing in these particulars show only certain parts of the property at the time when the photographs were taken. It should not be assumed that the property has all or any of the necessary planning permission, building regulation consent approval or other required consents for its previous, present or future intended usage. Any intending purchasers must satisfy themselves by inspection or by taking appropriate professional advice. Benham and Reeves Ltd has not tested any of the equipment, fittings or facilities.