



# Boulevard Drive, Beaufort Park, Colindale, NW9

Asking Price: £300,000

Benham  
& Reeves



# Boulevard Drive, Beaufort Park, Colindale, NW9

 Studio  1 Bathroom (s)  Leasehold

Ref# BEA220826

Situated on the second floor and spanning a generous 387 square feet (approx) is this well presented Manhattan apartment. The apartment is built up of a custom designed kitchen with fitted appliances, a bright open planned living room with access to a east facing terrace which overlooks the internal landscaped gardens, a spacious bedroom area with sliding tinted panels, a three piece bathroom suite and ample storage.

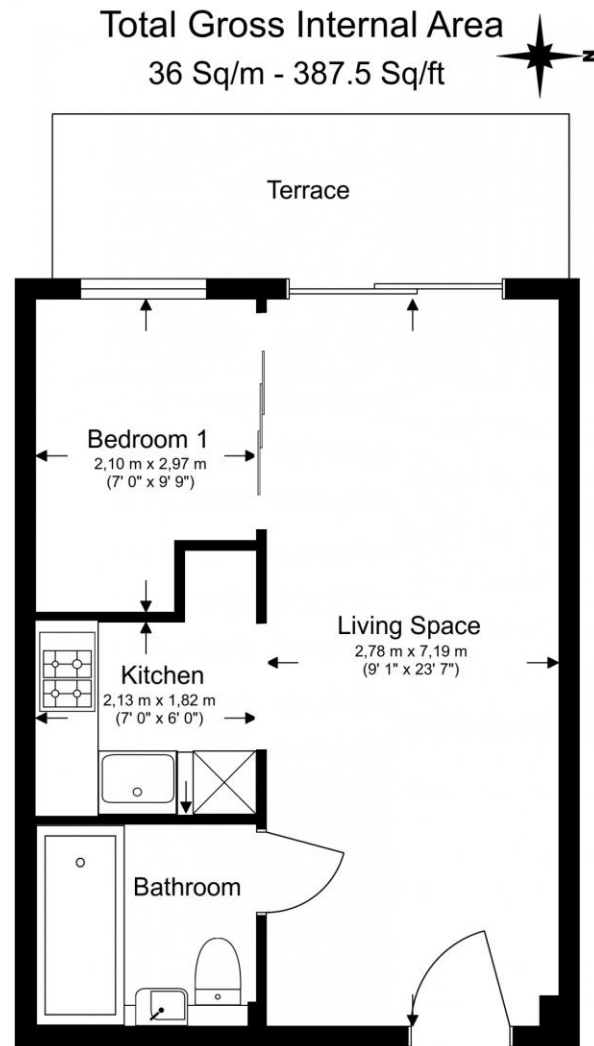
North West London's most exciting new destination, created by St George. Set amongst beautifully landscaped gardens and courtyards, the residences at Beaufort Park offer a new kind of London living. As part of this established community, residents benefit from exclusive use of a range of facilities including a stylish gym, swimming pool and spa, a variety of shops, leisure and, restaurants. A true new destination for North West London, with the added benefit of being within walking distance to Colindale Underground Station (Northern Line), which offers direct services to the West End and the City in less than 30 minutes and offers night tube.





## Property Features:

- Right To Park For One Car
- Stylish Manhattan Style Apartment
- Large Terrace Overlooking Landscaped Gardens
- Second Floor
- 387 Square Feet (Approx)
- 24 Hour Estate Management
- Residents Gym, Swimming Pool & Spa
- Colindale Tube Station (Northern Line)



Energy Efficiency Rating		
	Current	Potential
Very energy efficient - lower running costs		
(92+) <b>A</b>		
(81-91) <b>B</b>		
(69-80) <b>C</b>	<b>75</b>	<b>75</b>
(55-68) <b>D</b>		
(39-54) <b>E</b>		
(21-38) <b>F</b>		
(1-20) <b>G</b>		
Not energy efficient - higher running costs		
<b>England, Scotland &amp; Wales</b>	EU Directive 2002/91/EC	

Floor Plan measurements are approximate and are for illustrative purposes only. While we do not doubt the floor plans accuracy, we make no guarantee, warranty or representation as to the accuracy and completeness of the floor plan.



## Terms & Conditions:

These particulars are for guidance purposes only and do not form part of an offer or contract.

Asking Price:	£300,000
Tenure:	Leasehold Expires 24/12/3004 Approximately 979 Years Remaining
Ground Rent:	£200.00 (per annum) For the year of 2024 Next Review: December 2025 Next Increase: 100%
Service Charge:	£2,361.38 approx. (per annum) For the year of 2024
Anticipated Rent:	£1,550.00 pcm Approx. 6.2% Yield

## Viewings:

All viewings are by appointment only through our Beaufort Park Office.

Our reference: BEA220826

T: 020 8732 7980

E: [beaufortpark.sales@benhams.com](mailto:beaufortpark.sales@benhams.com)

W: [www.benhams.com](http://www.benhams.com)

Disclaimer: These particulars are for guidance purposes only and do not form part of an offer or contract. Whilst care has been taken in their preparation, Benham and Reeves or the vendor shall not be held responsible for any inaccuracies. You should not rely on statements by Benham and Reeves Ltd in the particulars or by word of mouth or in writing as being factually accurate about the property, its condition or its value. Any areas, measurements or distances are approximate. The text, photographs and plans are for guidance only. The photographs appearing in these particulars show only certain parts of the property at the time when the photographs were taken. It should not be assumed that the property has all or any of the necessary planning permission, building regulation consent approval or other required consents for its previous, present or future intended usage. Any intending purchasers must satisfy themselves by inspection or by taking appropriate professional advice. Benham and Reeves Ltd has not rested any of the equipment, fittings or facilities.

London | Canary Wharf | City | Colindale | Dartmouth Park | Ealing | Fulham | Hampstead  
Hammersmith | Highgate | Hyde Park | Kensington | Kew | Knightsbridge | Nine Elms  
Surrey Quays | Shoreditch | Wembley | Wapping | White City | Woolwich

International | China | Hong Kong | India | Israel | Malaysia | Middle East | Pakistan  
Singapore | South Africa | Turkey

