



Greencroft Gardens, London, NW6

Asking Price: £299,950

Benham
& Reeves

Greencroft Gardens, London, NW6

🏠 Studio 🚿 1 Bathroom (s) 🔑 Share of Freehold

Photos were taken prior to the current tenancy

A bright and spacious studio apartment approached via its own private entrance. The flat features a separate sleeping area and a separate fitted kitchen and has the added benefit of a private patio garden to the front. The flat also has access to the beautiful 3 acres of communal gardens at the rear of Greencroft Gardens.

The flat is at the favoured top end of Greencroft Gardens, so it is extremely well located for the multiple shopping and restaurant facilities available at Finchley Road, including the large Waitrose supermarket. Finchley Road Underground station (Metropolitan and Jubilee lines - Zone 2) is a few minutes away.



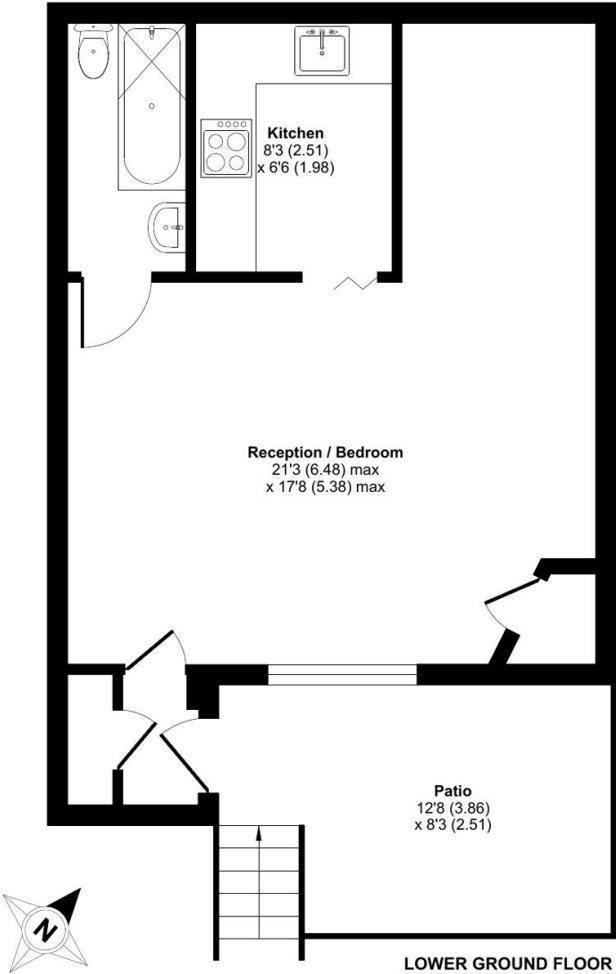


Property Features:

- Studio Room
- Separate Fitted Kitchen
- Separate Bed Area
- Bathroom
- Private Entrance
- Private Patio Garden
- Residents' Parking Zone
- Access to 3 acre Communal Garden

Greencroft Gardens, London, NW6

Approximate Area = 392 sq ft / 36.4 sq m
 For identification only - Not to scale



Score	Energy rating	Current	Potential
92+	A		
81-91	B		
69-80	C	77 C	77 C
55-68	D		
39-54	E		
21-38	F		
1-20	G		



Terms & Conditions:

These particulars are for guidance purposes only and do not form part of an offer or contract.

Asking Price:	£299,950
Tenure:	Share of Freehold Expires 06/04/3008 Approximately 982 Years Remaining
Ground Rent:	N/A
Service Charge:	£2,500.00 (per annum) Typically £2,500 per annum. Previously up to £3,000 to cover additional repair works.

Viewings:

All viewings are by appointment only through our Hampstead Office.

Our reference: HAM230133

T: 020 7435 9681

E: hampstead.sales@benhams.com

W: www.benhams.com

Disclaimer: These particulars are for guidance purposes only and do not form part of an offer or contract. Whilst care has been taken in their preparation, Benham and Reeves or the vendor shall not be held responsible for any inaccuracies. You should not rely on statements by Benham and Reeves Ltd in the particulars or by word of mouth or in writing as being factually accurate about the property, its condition or its value. Any areas, measurements or distances are approximate. The text, photographs and plans are for guidance only. The photographs appearing in these particulars show only certain parts of the property at the time when the photographs were taken. It should not be assumed that the property has all or any of the necessary planning permission, building regulation consent approval or other required consents for its previous, present or future intended usage. Any intending purchasers must satisfy themselves by inspection or by taking appropriate professional advice. Benham and Reeves Ltd has not rested any of the equipment, fittings or facilities.

London | Canary Wharf | City | Colindale | Dartmouth Park | Ealing | Fulham | Hampstead
Hammersmith | Highgate | Hyde Park | Kensington | Kew | Knightsbridge | Nine Elms
Surrey Quays | Shoreditch | Wembley | Wapping | White City | Woolwich

International | China | Hong Kong | India | Israel | Malaysia | Middle East | Pakistan
Singapore | South Africa | Turkey

