



Westbourne Apartments, 5 Central Avenue, Fulham £980,000

🚪 2 Bedroom(s) 🚽 2 Bathroom(s) 🔑 Leasehold

"OFFERED ON A CHAIN FREE BASIS" and ready for occupation is this modern and luxury, 7th floor apartment with south and west aspect views overlooking a well sought after landscaped gardens. Extending to an approximate 960 square feet this stunning and well-proportioned apartment consists of a large entrance hall, Utility/storage cupboard, an additional cupboard, two bedrooms and a large kitchen/...[Read more](#)

Visit <https://www.benhams.com/property-for-sale/westbourne-apartments-5-central-avenue-sw6/18109420/> for full details

For more information about this property, please call our office on

Office

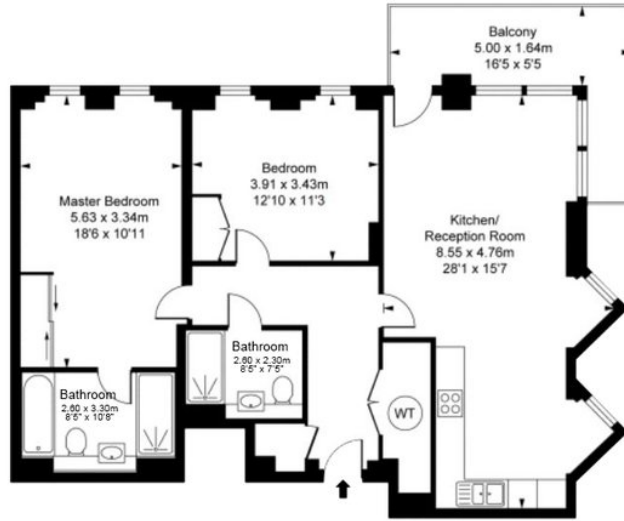
, ,

<https://www.benhams.com>



Floor plan

Total Gross Internal Area 89.20 Sq/m - 960 Sq/ft



Floor Plan measurements are approximate and are for illustrative purposes only. While we do not doubt the floor plans accuracy, we make no guarantee, warranty or representation as to the accuracy and completeness of the floor plan.

Energy performance certificates

Energy Efficiency Rating		
	Current	Potential
<i>Very energy efficient - lower running costs</i>		
(92-100) A		
(81-91) B	84	85
(69-80) C		
(55-68) D		
(39-54) E		
(21-38) F		
(1-20) G		
<i>Not energy efficient - higher running costs</i>		
England, Scotland & Wales	EU Directive 2002/91/EC	

Environmental Impact (CO ₂) Rating		
	Current	Potential
<i>Very environmentally friendly - lower CO₂ emissions</i>		
(92-100) A		
(81-91) B	90	90
(69-80) C		
(55-68) D		
(39-54) E		
(21-38) F		
(1-20) G		
<i>Not environmentally friendly - higher CO₂ emissions</i>		
England, Scotland & Wales	EU Directive 2002/91/EC	

Disclaimer: these particulars are for guidance purposes only and do not form part of an offer or contract. Whilst care has been taken in their preparation, Benham and Reeves or the vendor shall not be held responsible for any inaccuracies. You should not rely on statements by Benham and Reeves Ltd in the particulars or by word of mouth or in writing as being factually accurate about the property, its condition or its value. Any areas, measurements or distances are approximate. The text, photographs and plans are for guidance only. The photographs appearing in these particulars show only certain parts of the property at the time when the photographs were taken. It should not be assumed that the property has all or any of the necessary planning permission, building regulation consent approval or other required consents for its previous, present or future intended usage. Any intending purchasers must satisfy themselves by inspection or by taking appropriate professional advice. Benham and Reeves Ltd has not tested any of the equipment, fittings or facilities.