



Benham & Reeves

Cluny Mews, Kensington, SW5

£1,250 per week, £5,417 per month + fees

 2 Bedrooms  2 Bathrooms 
Furnished/UnFurnished

A Modern and beautifully designed 2 Bed Duplex in this brand-new modern development based in Earls Court.

Please [click here](#) for full detail

Property features

Concierge | Modern Development | New | Wooden Floors | New Appliances | EPC-TBC | Bright | Residential lift | Residents only Green Space | Nearby Earls Court Station

For more information about this property,
please call our Kensington branch on

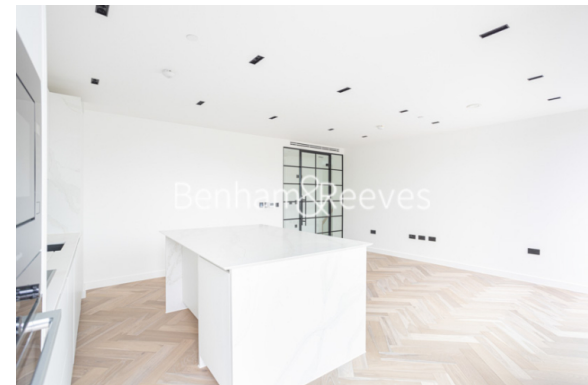
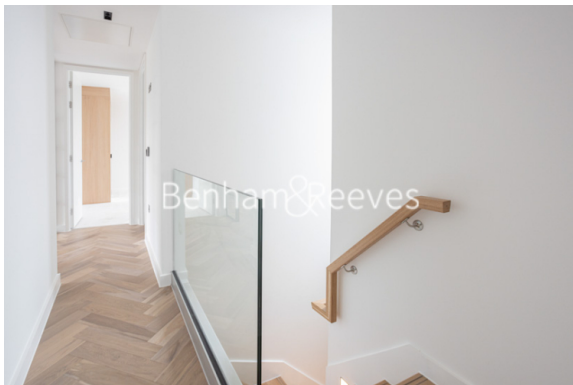
020 7938 3522

Redress & Client Money Protection :

Benham and Reeves are members of The Property Ombudsman redress scheme and have Client Money protection with ARLA Propertymark. You can find more information on our website at <https://www.benhamandreeves.com/membership/>



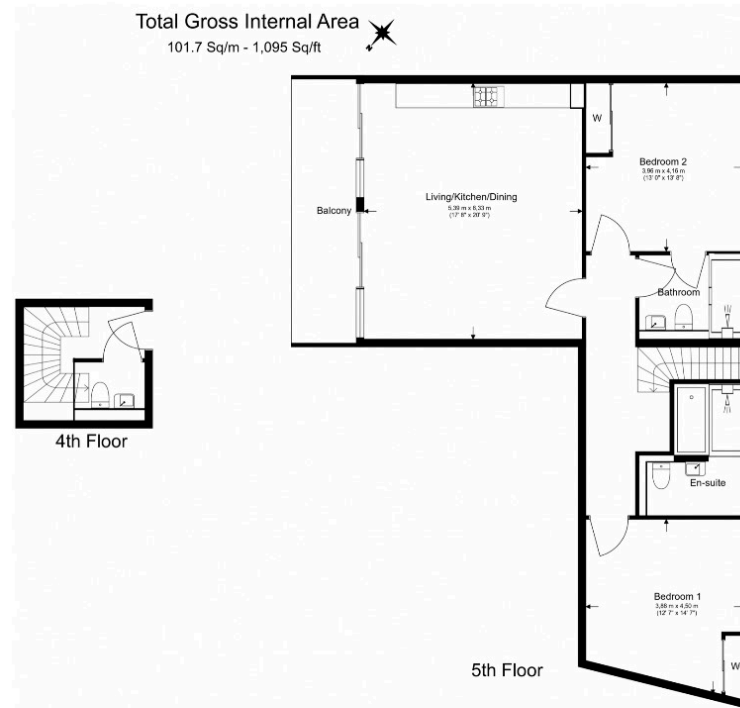
Benham&Reeves



Cluny Mews, Kensington, SW5

£1,250 per week, £5,417 per month + fees

www.benhams.com



Floor Plan measurements are approximate and are for illustrative purposes only. While we do not doubt the floor plans accuracy, we make no guarantee, warranty or representation as to the accuracy and completeness of the floor plan.

London branches open six days a week Mon - Sat

Canary Wharf | City | Colindale | Dartmouth Park | Ealing | Fulham
Hammersmith | Hampstead | Highgate | Hyde Park | Kensington | Kew
Knightsbridge | Nine Elms | Shoreditch | Southall | Surrey Quays
Wapping | Wembley | White City | Woolwich

International offices

China | Hong Kong SAR | India | Israel | Malaysia | Middle East | Pakistan
Qatar | Singapore | South Africa | Thailand | Turkey



Benham & Reeves