



Benham&Reeves

## **The Boulevard, Fulham, SW6**

£1,558 per week, £6,751 per month + fees

 3 Bedrooms    3 Bathrooms    Furnished

A stunning spacious apartment situated in a Riverside development designed by the award-winning St. George. Benefitting from excellent transport links, including its own mainline overground station.

Please [click here](#) for full detail

## Property features

**3 Bedrooms | 3 Bathrooms | Reception | Furnished | Fitted Kitchen | EPC-C | Comfort Cooling | 24 hour concierge | Nearby Imperial Wharf Overground station**

For more information about this property,  
please call our Fulham branch on

**020 7348 7620**

Redress & Client Money Protection :

Benham and Reeves are members of The Property Ombudsman redress scheme and have Client Money protection with ARLA Propertymark. You can find more information on our website at <https://www.benhamandreeves.com/membership/>



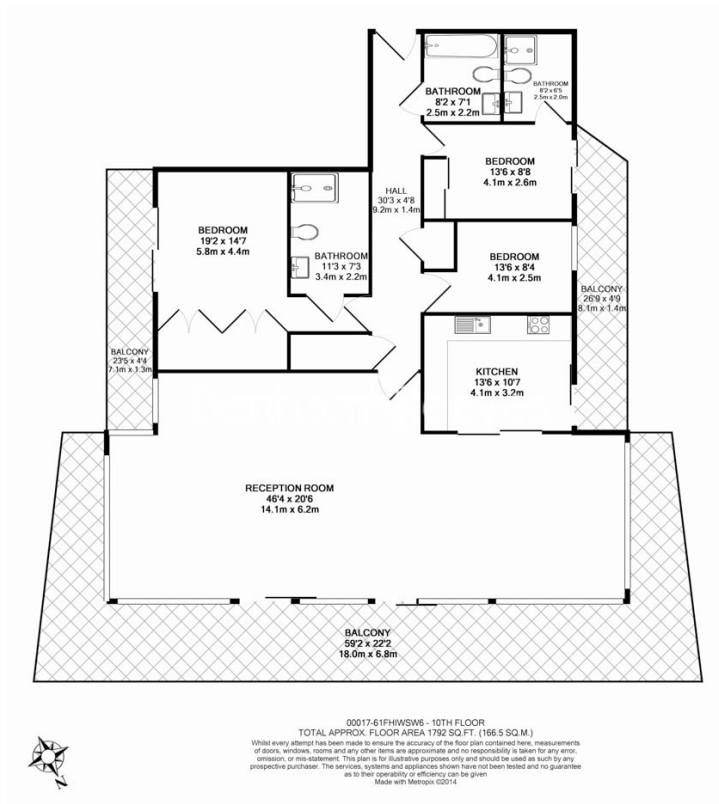
**Benham & Reeves**



# The Boulevard, Fulham, SW6

£1,558 per week, £6,751 per month + fees

[www.benhams.com](http://www.benhams.com)



## London branches open six days a week Mon - Sat

Canary Wharf | City | Colindale | Dartmouth Park | Ealing | Fulham  
Hammersmith | Hampstead | Highgate | Hyde Park | Kensington | Kew  
Knightsbridge | Nine Elms | Shoreditch | Southall | Surrey Quays  
Wapping | Wembley | White City | Woolwich

## International offices

China | Hong Kong SAR | India | Israel | Malaysia | Middle East | Pakistan  
Qatar | Singapore | South Africa | Thailand | Turkey



Benham & Reeves