



Benham & Reeves

Lensbury Avenue, Fulham, SW6

£774 per week, £3,354 per month + fees

 2 Bedrooms  2 Bathrooms  Furnished

A stunning apartment situated in the Riverside development: Imperial Wharf. The development has a host on on-site amenities and is just a stone's throw away from Imperial Wharf overground station. EPC-B

Please [click here](#) for full detail

Property features

2 Bedrooms | 2 Bathrooms | Reception | Furnished | Fitted Kitchen | EPC-B | 24 Hour Porter | Wood Floor | Imperial Wharf Overground

For more information about this property,
please call our Fulham branch on

020 7348 7620

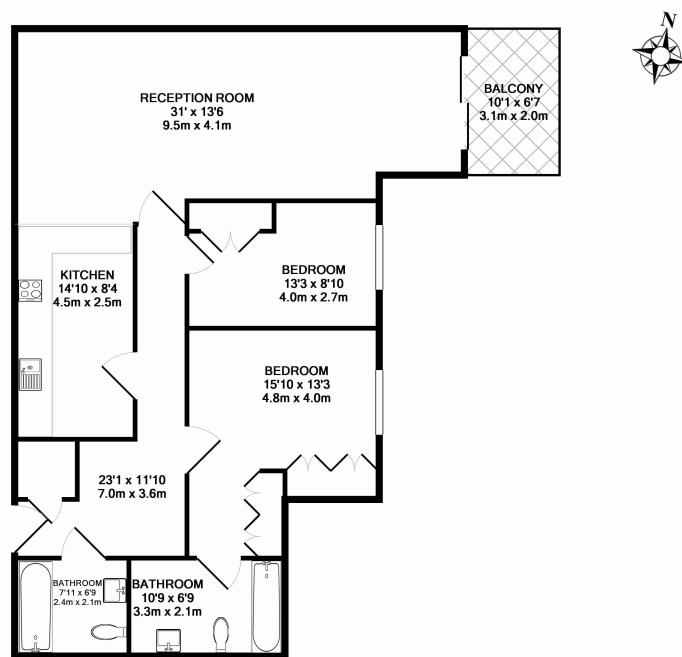




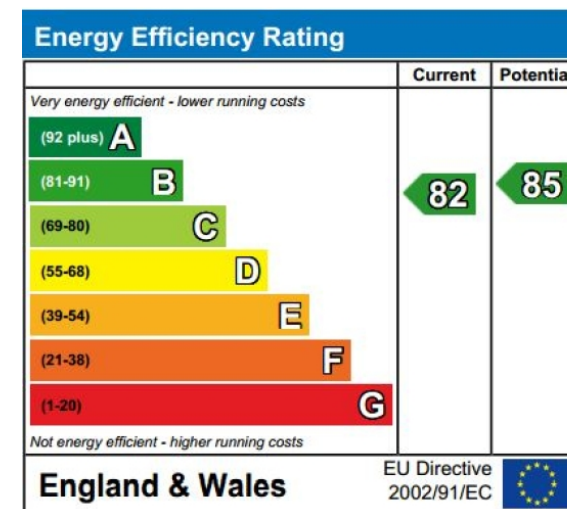
Lensbury Avenue, Fulham, SW6

£774 per week, £3,354 per month + fees

www.benhams.com



00085-7CHIWSW6 - 1ST FLOOR
TOTAL APPROX. FLOOR AREA 1077 SQ.FT. (100.0 SQ.M.)
Whilst every attempt has been made to ensure the accuracy of the floor plan contained herein, measurements of doors, windows, rooms and any other items are approximate and no responsibility is taken for any error, omission, or mis-statement. This plan is for illustrative purposes only and should be used as such by any prospective purchaser. The services, systems and appliances shown have not been tested and no guarantee as to their operability or efficiency can be given.
Made with Metropix ©2015



London branches open six days a week Mon - Sat

Canary Wharf | City | Colindale | Dartmouth Park | Ealing | Fulham
Hammersmith | Hampstead | Highgate | Hyde Park | Kensington | Kew
Knightsbridge | Nine Elms | Shoreditch | Southall | Surrey Quays
Wapping | Wembley | White City | Woolwich

International offices

China | Hong Kong SAR | India | Israel | Malaysia | Middle East | Pakistan
Qatar | Singapore | South Africa | Thailand | Turkey



Benham & Reeves