



Benham & Reeves

## **The Triton Tower NW1**

£900 per week, £3,900 per month + fees

🛏️ 2 Bedrooms    🚿 1 Bathroom    🛋️ Furnished

A brand new 2 bedroom, 2 bathroom, furnished apartment, located within the Regent Place development, close to Warren Street and Great Portland Street underground station. The property has been finished to an extremely high standard. EPC-B

Please [click here](#) for full detail

## Property features

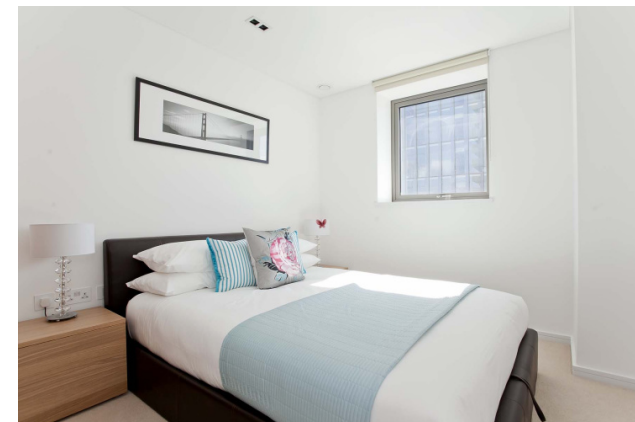
**2 Bedroom | 2 Bathroom | Furnished by an interior designer | Private balcony | en-suite | EPC-B | Luxury appliances | 24 hour Concierge | Private Parking Space | Open plan reception**

For more information about this property,  
please call our Hyde Park branch on

**020 7402 9866**

Redress & Client Money Protection :

Benham and Reeves are members of The Property Ombudsman redress scheme and have Client Money protection with ARLA Propertymark. You can find more information on our website at <https://www.benhams.com/membership/>



Benham & Reeves





# The Triton Tower NW1

£900 per week, £3,900 per month + fees

[www.benhams.com](http://www.benhams.com)

## London branches open six days a week Mon - Sat

Canary Wharf | City | Colindale | Dartmouth Park | Ealing | Fulham  
Hammersmith | Hampstead | Highgate | Hyde Park | Kensington | Kew  
Knightsbridge | Nine Elms | Shoreditch | Southall | Surrey Quays  
Wapping | Wembley | White City | Woolwich

## International offices

China | Hong Kong SAR | India | Indonesia | Qatar | Malaysia | Middle East | Pakistan  
Singapore | South Africa | Thailand | Turkey

