



Benham & Reeves

Broadwalk Court, Kensington, W8

£473 per week, £2,050 per month + fees

🛏 Studio 🚿 1 Bathroom 🛋 Unfurnished

A modern studio apartment situated in a purpose-built development offering both comfort and convenience in Kensington and Chelsea. A convenient three-minute walk from Notting Hill Gate Tube Station.

Please [click here](#) for full detail

Property features

Furnished | Heating & Hot water included | Built in Storage | Modern | Available from January 2024 | EPC-C | Close to Amenities | Transport links nearby | Notting Hill Gate Tube Station

For more information about this property,
please call our Kensington branch on

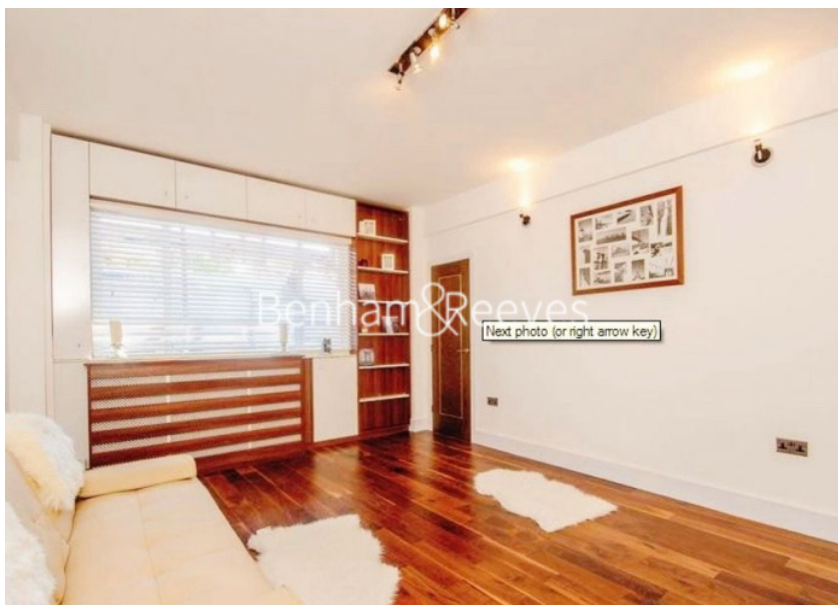
020 7938 3522



Redress & Client Money Protection :

Benham and Reeves are members of The Property Ombudsman redress scheme and have Client Money protection with ARLA Propertymark. You can find more information on our website at <https://www.benham.com/membership/>

Benham & Reeves



Broadwalk Court, Kensington, W8

£473 per week, £2,050 per month + fees

www.benhams.com

Score	Energy rating	Current	Potential
92+	A		
81-91	B		
69-80	C	78 C	80 C
55-68	D		
39-54	E		
21-38	F		
1-20	G		

London branches open six days a week Mon - Sat

Canary Wharf | City | Colindale | Dartmouth Park | Ealing | Fulham
Hammersmith | Hampstead | Highgate | Hyde Park | Kensington | Kew
Knightsbridge | Nine Elms | Shoreditch | Southall | Surrey Quays
Wapping | Wembley | White City | Woolwich

International offices

China | Hong Kong SAR | India | Israel | Malaysia | Middle East | Pakistan
Qatar | Singapore | South Africa | Thailand | Turkey

