



Benham & Reeves

Woodberry Down, Highgate, N4

£670 per week, £2,903 per month + fees

 2 Bedrooms  2 Bathrooms  Furnished

Stunning, bright and light two double bedroom, two bathroom apartment in Willowbrook House, part of the Woodberry Down Development in N4.

Please [click here](#) for full detail

Property features

Two Double Bedrooms | Gym And Swimming Pool | Two Bathrooms | 24/7 Concierge | Modern Fully Fitted Kitchen | EPC-B | Open Plan Reception Room | New Development | Private Balcony | Walking Distance To Tube Station

For more information about this property,
please call our Highgate branch on

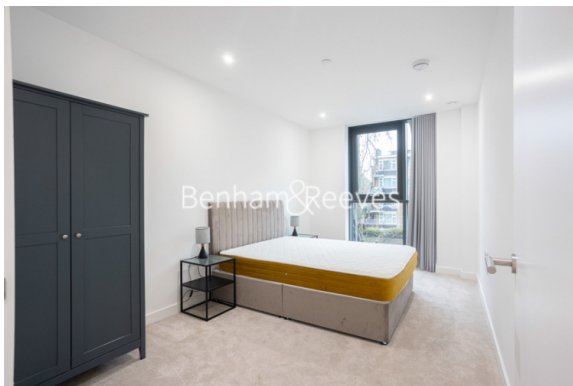
020 8341 2335

Redress & Client Money Protection :

Benham and Reeves are members of The Property Ombudsman redress scheme and have Client Money protection with ARLA Propertymark. You can find more information on our website at <https://www.benhams.com/membership/>



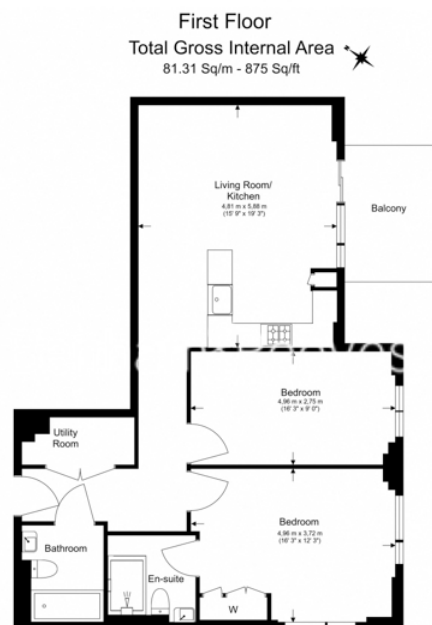
Benham & Reeves



Woodberry Down, Highgate, N4

£670 per week, £2,903 per month + fees

www.benhams.com



Floor Plan measurements are approximate and are for illustrative purposes only. While we do not doubt the floor plans accuracy, we make no guarantee, warranty or representation as to the accuracy and completeness of the floor plan.

Score	Energy rating	Current	Potential
92+	A		
81-91	B	85 B	85 B
69-80	C		
55-68	D		
39-54	E		
21-38	F		
1-20	G		

London branches open six days a week Mon - Sat

Canary Wharf | City | Colindale | Dartmouth Park | Ealing | Fulham
Hammersmith | Hampstead | Highgate | Hyde Park | Kensington | Kew
Knightsbridge | Nine Elms | Shoreditch | Southall | Surrey Quays
Wapping | Wembley | White City | Woolwich

International offices

China | Hong Kong SAR | India | Israel | Malaysia | Middle East | Pakistan
Qatar | Singapore | South Africa | Thailand | Turkey



Benham & Reeves