



Benham & Reeves

Lincoln Square, 18 Portugal Street, WC2A

£1,616 per week, £7,003 per month + fees

 2 Bedrooms  2 Bathrooms  Furnished

Beautifully furnished, ground floor apartment situated within an exclusive luxury development within Lincoln's Inn Fields, surrounded by a calm and quiet sanctuary, a six-minute walk from Holborn Tube Station.

Please [click here](#) for full detail

Property features

2 Bedroom Apartment | Bespoke Family Bathroom, Ensuite Shower and Guest WC | Open Plan Living Space | Fully Fitted Kitchen | Furnished | EPC-B | 24-Hour Concierge & Excellent Amenities including Gym & Spa | Excellent Transport Links | Large Utility Room | Temple Underground Station Nearby

For more information about this property, please call our City branch on

020 7213 9700

Redress & Client Money Protection :

Benham and Reeves are members of The Property Ombudsman redress scheme and have Client Money protection with ARLA Propertymark. You can find more information on our website at <https://www.benhams.com/membership/>



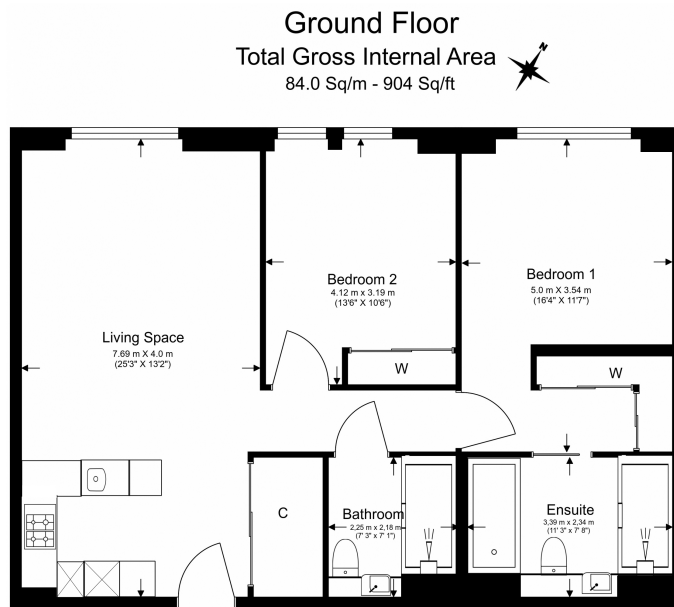
Benham & Reeves



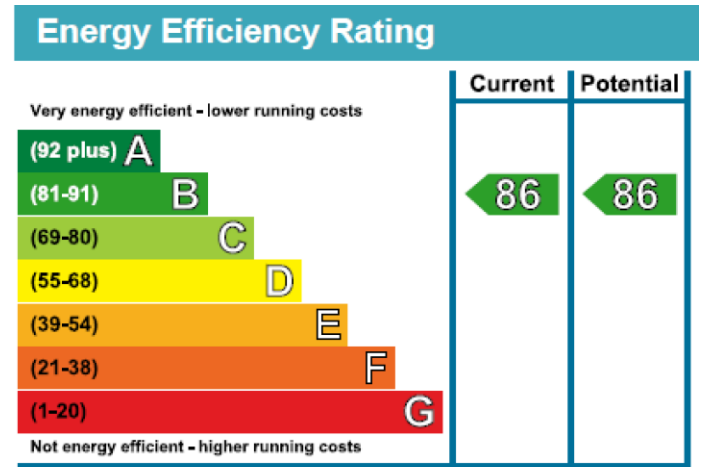
Lincoln Square, 18 Portugal Street, WC2A

£1,616 per week, £7,003 per month + fees

www.benhams.com



Floor Plan measurements are approximate and are for illustrative purposes only. While we do not doubt the floor plans accuracy, we make no guarantee, warranty or representation as to the accuracy and completeness of the floor plan.



London branches open six days a week Mon - Sat

Canary Wharf | City | Colindale | Dartmouth Park | Ealing | Fulham
Hammersmith | Hampstead | Highgate | Hyde Park | Kensington | Kew
Knightsbridge | Nine Elms | Shoreditch | Southall | Surrey Quays
Wapping | Wembley | White City | Woolwich

International offices

China | Hong Kong SAR | India | Indonesia | Qatar | Malaysia | Middle East |
Singapore | South Africa | Thailand | Turkey

