



Benham & Reeves

**Valentine House, 2 Sands End Lane, SW6**

£1,000 per week, £4,333 per month + fees

 2 Bedrooms    2 Bathrooms    Furnished

**PARKING INCLUDED** A brand-new, stylish apartment situated in a desirable development, with a host of amenities onsite, located in one of South West London's most iconic areas, close to the River Thames The property enjoys easy access from Fulham Broadway station.

Please [click here](#) for full detail

## Property features

**2 Double Bedroom Apartment both having Built-in Wardrobe | Fully Fitted Open Plan Kitchen Integrated | Internal Area: 802 Sq Ft / Internal Storage Room | Air Ventilation / Underfloor Heating / Air Conditioning | Parking Included | EPC-B | 4 Hr Concierge / 24 Hr Security / Communal Gardens | Gymnasium with Two Fitness Studios | Luxurious Stone Finish Double Bathroom with Feature Lighting | Nearby Fulham Broadway station**

For more information about this property,  
please call our Property Management branch on

**020 7319 9740**

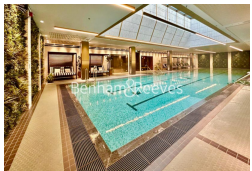
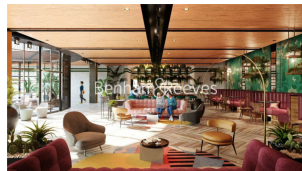
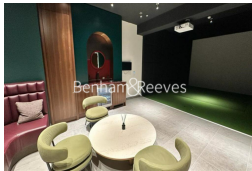
Redress & Client Money Protection :

Benham and Reeves are members of The Property Ombudsman redress scheme and have Client Money protection with ARLA Propertymark. You can find more information on our website at <https://www.benhamandreeves.com/membership/>



Benham & Reeves





# Valentine House, 2 Sands End Lane, SW6

£1,000 per week, £4,333 per month + fees

[www.benhams.com](http://www.benhams.com)

Score	Energy rating	Current	Potential
92+	A		
81-91	B	84 B	84 B
69-80	C		
55-68	D		
39-54	E		
21-38	F		
1-20	G		

## London branches open six days a week Mon - Sat

Canary Wharf | City | Colindale | Dartmouth Park | Ealing | Fulham  
Hammersmith | Hampstead | Highgate | Hyde Park | Kensington | Kew  
Knightsbridge | Nine Elms | Shoreditch | Southall | Surrey Quays  
Wapping | Wembley | White City | Woolwich

## International offices

China | Hong Kong SAR | India | Indonesia | Qatar | Malaysia | Middle East |  
Singapore | South Africa | Thailand | Turkey

