



Benham & Reeves

Rosebay House, 8 Frank Searle Passage, E17

£369 per week, £1,599 per month + fees

 1 Bedroom  1 Bathroom  Furnished

A premium, fully furnished, apartment situated within a development surrounded by a wealth of vibrant culture, located opposite Blackhorse Road station. Superb transport connections and close to the Walthamstow Wetlands for perfect recreational time.

Please [click here](#) for full detail

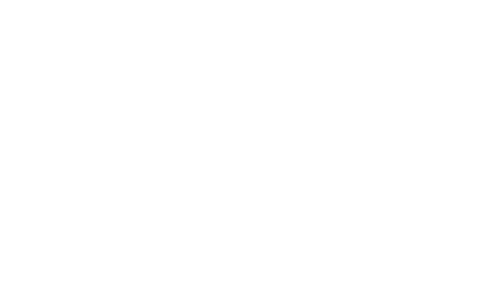
Property features

One Double Bedroom | Open-Plan Reception | Fitted Kitchen, Including Dishwasher | One Bathroom | Fully Furnished | EPC-B | Excellent Storage Space | Private Large Balcony | Secure development | Nearby BlackHorse Road Overground and Underground Station

For more information about this property,
please call our Canary Wharf branch on

020 8036 3200

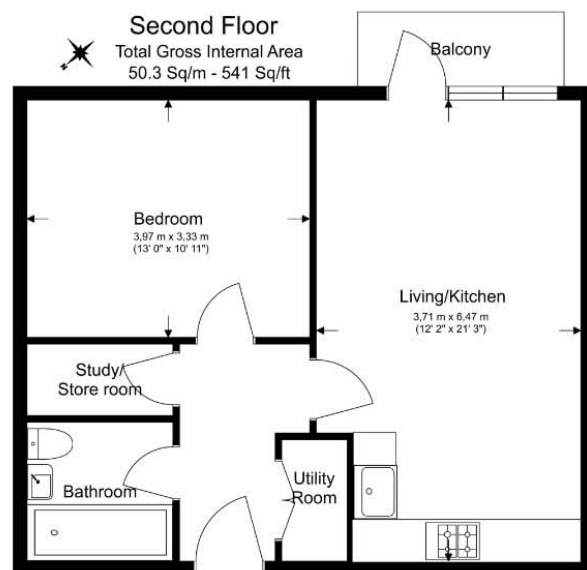




Rosebay House, 8 Frank Searle Passage, E17

£369 per week, £1,599 per month + fees

www.benhams.com



Floor Plan measurements are approximate and are for illustrative purposes only. While we do not doubt the floor plans accuracy we make no guarantee, warranty or representation as to the accuracy and completeness of the floor plan.

Score	Energy rating	Current	Potential
92+	A		
81-91	B	84 B	84 B
69-80	C		
55-68	D		
39-54	E		
21-38	F		
1-20	G		

London branches open six days a week Mon - Sat

Canary Wharf | City | Colindale | Dartmouth Park | Ealing | Fulham
Hammersmith | Hampstead | Highgate | Hyde Park | Kensington | Kew
Knightsbridge | Nine Elms | Shoreditch | Southall | Surrey Quays
Wapping | Wembley | White City | Woolwich

International offices

China | Hong Kong SAR | India | Indonesia | Qatar | Malaysia | Middle East | Pakistan
Singapore | South Africa | Thailand | Turkey



Benham & Reeves