



Benham & Reeves

**Luke House, Abbey Orchard Street, Victoria, SW1**

£625 per week, £2,708 per month + fees

 1 Bedroom    1 Bathroom    Furnished

A very well-presented 487 sq ft ONE-BEDROOM apartment with PRIVATE TERRACE situated on the 5th floor of the highly-desired LUKE HOUSE in vibrant VICTORIA. Perfectly-located, the property is within a 5 minute walk to ST JAMES'S PARK, VICTORIA & WESTMINSTER STATIONS. Residents also benefit from free Wi-Fi and Parking by separate negotiation.

Please [click here](#) for full detail

## Property features

**1 Bedroom | 1 Bathroom | Reception | Furnished | Fitted Kitchen | EPC-C | Lift, Wi Fi, Parking | Private Terrace | Nearby St. James's Park and Victoria Stations**

For more information about this property,  
please call our Knightsbridge branch on

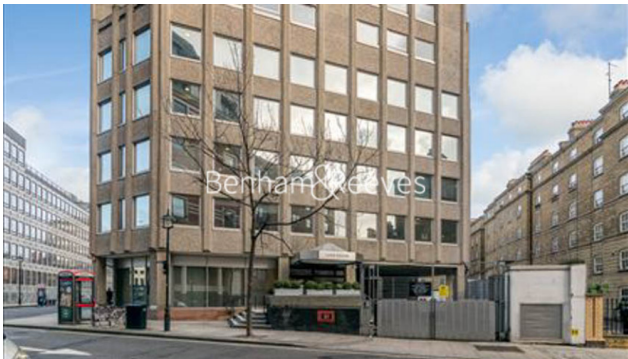
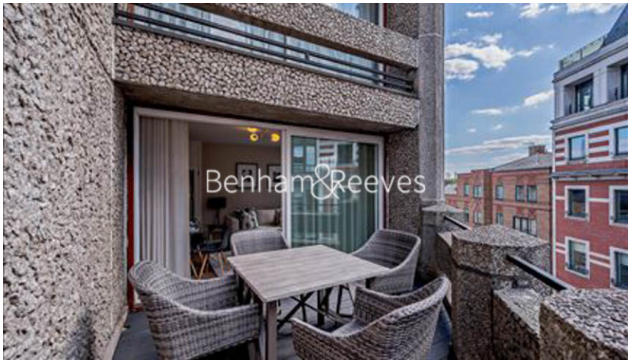
**020 7581 2112**



Redress & Client Money Protection :

Benham and Reeves are members of The Property Ombudsman redress scheme and have Client Money protection with ARLA Propertymark. You can find more information on our website at <https://www.benhams.com/membership/>

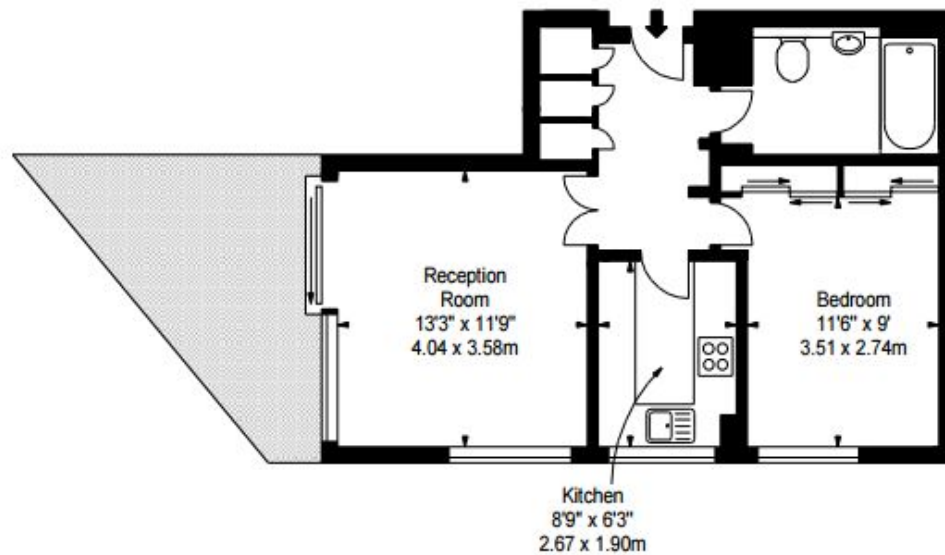
Benham & Reeves



# Luke House, Abbey Orchard Street, Victoria, SW1

www.benhams.com

£625 per week, £2,708 per month + fees



Energy Efficiency Rating		
	Current	Potential
Very energy efficient - lower running costs		
(92 plus) <b>A</b>		
(81-91) <b>B</b>		
(69-80) <b>C</b>	75	75
(55-68) <b>D</b>		
(39-54) <b>E</b>		
(21-38) <b>F</b>		
(1-20) <b>G</b>		
Not energy efficient - higher running costs		
<b>England &amp; Wales</b>	EU Directive 2002/91/EC	

## London branches open six days a week Mon - Sat

Canary Wharf | City | Colindale | Dartmouth Park | Ealing | Fulham  
 Hammersmith | Hampstead | Highgate | Hyde Park | Kensington | Kew  
 Knightsbridge | Nine Elms | Shoreditch | Southall | Surrey Quays  
 Wapping | Wembley | White City | Woolwich

## International offices

China | Hong Kong SAR | India | Indonesia | Qatar | Malaysia | Middle East |  
 Singapore | South Africa | Thailand | Turkey



Benham & Reeves