



Benham & Reeves

Edwin House, Accolade Avenue, UB1

£450 per week, £1,950 per month + fees

🛏️ 2 Bedrooms 🚿 2 Bathrooms 🛋️ Furnished

This stunning 5th Floor, Two Bedroom apartment set in the Edwin House part of the Green Quarter, an outstanding new Berkeley development on the in Western fringe of London featuring great views of the surrounding landscaped gardens.

Please [click here](#) for full detail

Property features

2 Bedrooms | Gym | Residents lounge | Concierge | Large Private Balcony | EPC-B | Furnished | Wood Floor And Large Floor-To-Ceiling Windows | Cinema room | Nearby Southall Station

For more information about this property,
please call our Property Management branch on

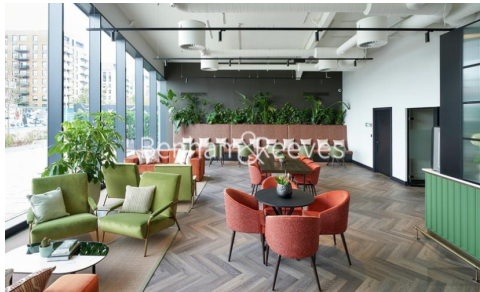
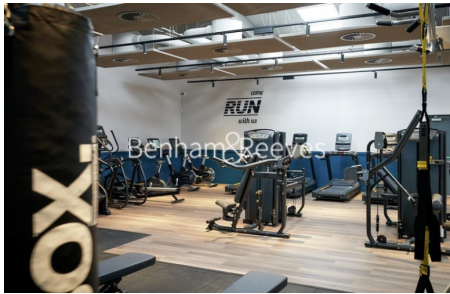
020 7319 9740

Redress & Client Money Protection :

Benham and Reeves are members of The Property Ombudsman redress scheme and have Client Money protection with ARLA Propertymark. You can find more information on our website at <https://www.benhams.com/membership/>



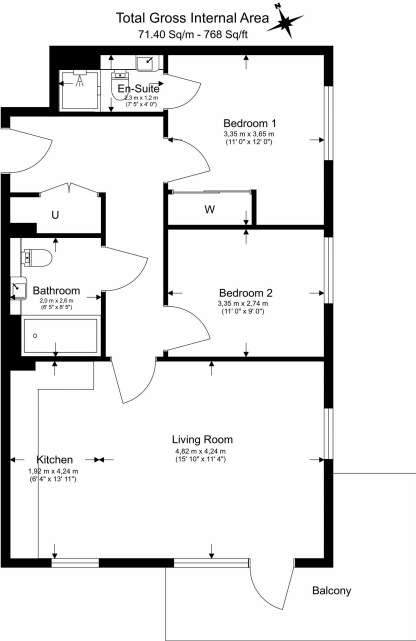
Benham & Reeves



Edwin House, Accolade Avenue, UB1

£450 per week, £1,950 per month + fees

www.benhams.com



Floor Plan measurements are approximate and are for illustrative purposes only. While we do not doubt the floor plans accuracy we make no guarantee, warranty or representation as to the accuracy and completeness of the floor plan.

Score	Energy rating	Current	Potential
92+	A		
81-91	B	84 B	84 B
69-80	C		
55-68	D		
39-54	E		
21-38	F		
1-20	G		

London branches open six days a week Mon - Sat

Canary Wharf | City | Colindale | Dartmouth Park | Ealing | Fulham
Hammersmith | Hampstead | Highgate | Hyde Park | Kensington | Kew
Knightsbridge | Nine Elms | Shoreditch | Southall | Surrey Quays
Wapping | Wembley | White City | Woolwich

International offices

China | Hong Kong SAR | India | Indonesia | Qatar | Malaysia | Middle East |
Singapore | South Africa | Thailand | Turkey

