



Benham & Reeves

## **Edwin House, Accolade Avenue, UB1**

£392 per week, £1,699 per month + fees

🛏 1 Bedroom    🚿 1 Bathroom    🛋 Furnished

This stunning 7th floor apartment is situated in an outstanding Berkeley development on the Western fringe of London featuring great views of the surrounding landscaped gardens. A short walk from Southall Station (Zone 4).

Please [click here](#) for full detail

## Property features

Concierge | Gym | Cinema Room | Residents Lounge | Furnished | EPC-B | Western fringe | Balcony | landscaped gardens | Nearby Southall Station

For more information about this property,  
please call our Property Management branch on

**020 7319 9740**

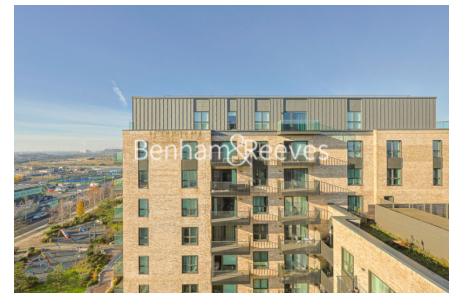
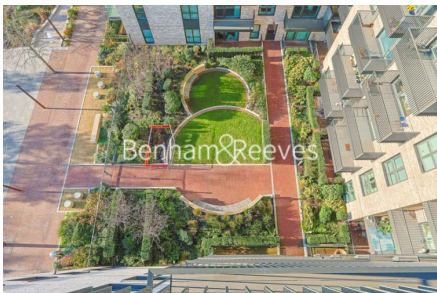
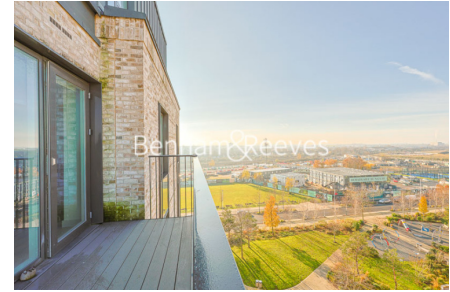
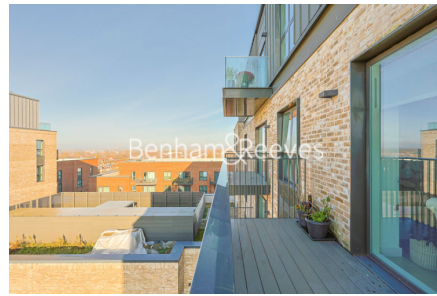
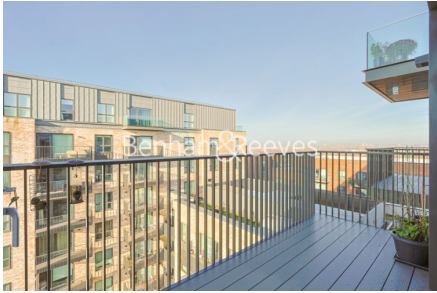
Redress & Client Money Protection :

Benham and Reeves are members of The Property Ombudsman redress scheme and have Client Money protection with ARLA Propertymark. You can find more information on our website at <https://www.benhamandreeves.com/membership/>



Benham&Reeves

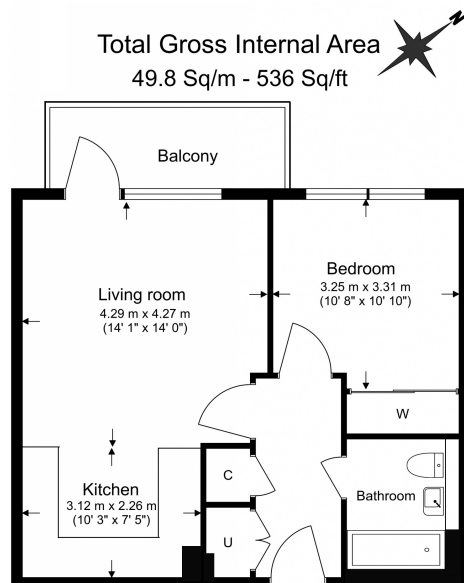




# Edwin House, Accolade Avenue, UB1

£392 per week, £1,699 per month + fees

www.benhams.com



Benham & Reeves

Floor Plan measurements are approximate and are for illustrative purposes only. While we do not doubt the floor plans accuracy, we make no guarantee, warranty or representation as to the accuracy and completeness of the floor plan.

Score	Energy rating	Current	Potential
92+	A		
81-91	B	85 B	85 B
69-80	C		
55-68	D		
39-54	E		
21-38	F		
1-20	G		

## London branches open six days a week Mon - Sat

Canary Wharf | City | Colindale | Dartmouth Park | Ealing | Fulham  
Hammersmith | Hampstead | Highgate | Hyde Park | Kensington | Kew  
Knightsbridge | Nine Elms | Shoreditch | Southall | Surrey Quays  
Wapping | Wembley | White City | Woolwich

## International offices

China | Hong Kong SAR | India | Indonesia | Qatar | Malaysia | Middle East |  
Singapore | South Africa | Thailand | Turkey



Benham & Reeves