



Benham & Reeves

**East Acton Lane, Acton, W3**

£577 per week, £2,500 per month + fees

 2 Bedrooms    2 Bathrooms    Furnished

This furnished 6th floor apartment is situated in an exciting development in Acton, a short walk from East Acton Station (Central Line).

Please [click here](#) for full detail

## Property features

**2 Bedrooms | 2 Bathrooms | Reception | Furnished | Balcony | EPC-B | Wood Floor | Modern kitchen | Close to Amenities | East Acton Station**

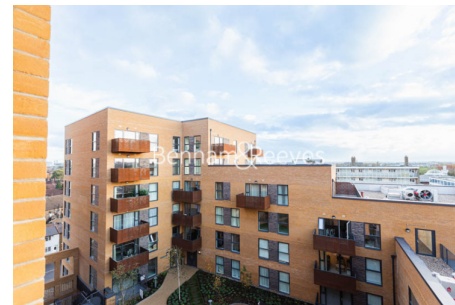
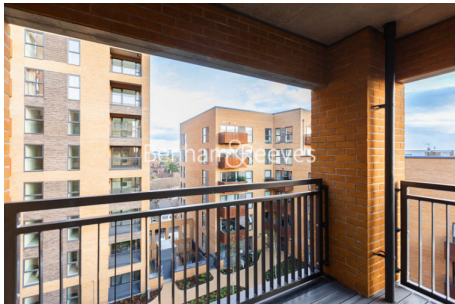
For more information about this property,  
please call our Ealing branch on

**020 8280 0140**



Redress & Client Money Protection :  
Benham and Reeves are members of The Property Ombudsman redress scheme and have Client Money protection with ARLA Propertymark.  
You can find more information on our website at <https://www.benham.com/membership/>

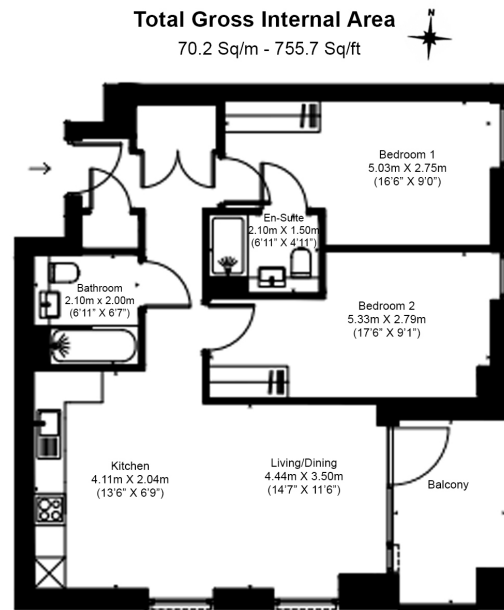
**Benham & Reeves**



# East Acton Lane, Acton, W3

£577 per week, £2,500 per month + fees

www.benhams.com



Floor Plan measurements are approximate and are for illustrative purposes only. While we do not doubt the floor plans accuracy, we make no guarantee, warranty or representation as to the accuracy and completeness of the floor plan.

Score	Energy rating	Current	Potential
92+	A		
81-91	B	86   B	86   B
69-80	C		
55-68	D		
39-54	E		
21-38	F		
1-20	G		

## London branches open six days a week Mon - Sat

Canary Wharf | City | Colindale | Dartmouth Park | Ealing | Fulham  
Hammersmith | Hampstead | Highgate | Hyde Park | Kensington | Kew  
Knightsbridge | Nine Elms | Shoreditch | Southall | Surrey Quays  
Wapping | Wembley | White City | Woolwich

## International offices

China | Hong Kong SAR | India | Indonesia | Qatar | Malaysia | Middle East |  
Singapore | South Africa | Thailand | Turkey



Benham & Reeves