



Benham & Reeves

**Bromyard Avenue, Acton, W3**

£393 per week, £1,703 per month + fees

 1 Bedroom    1 Bathroom    Furnished

An impressive modern 3rd floor apartment situated within a sought-after private development with 24hr concierge. The property is a short journey from East Acton station, which has excellent travel services around London.

Please [click here](#) for full detail

## Property features

**Gated Development | Concierge | Balcony | Furnished | Open Plan Reception | EPC-C | Close To The Amenities | Wood Floors | Floor-To-Ceiling Windows | Nearby East Acton (Central Line) Underground Station**

For more information about this property,  
please call our Property Management branch on

**020 7319 9740**

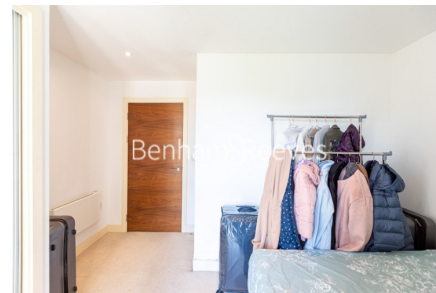
Redress & Client Money Protection :

Benham and Reeves are members of The Property Ombudsman redress scheme and have Client Money protection with ARLA Propertymark. You can find more information on our website at <https://www.benhamandreeves.com/membership/>



**Benham & Reeves**

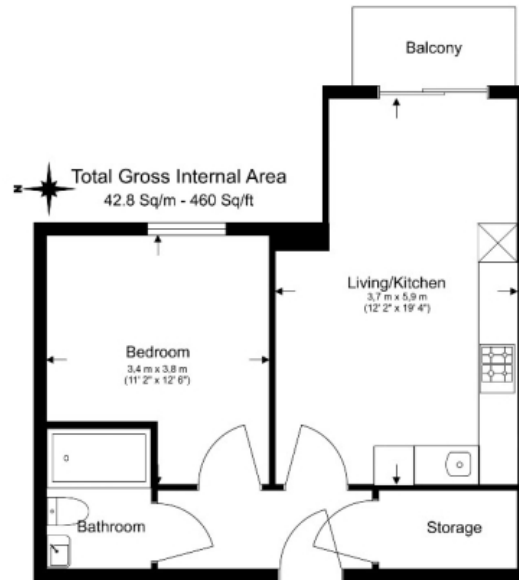




# Bromyard Avenue, Acton, W3

£393 per week, £1,703 per month + fees

[www.benhams.com](http://www.benhams.com)



Floor Plan measurements are approximate and are for illustrative purposes only. While we do not doubt the floor plans accuracy, we make no guarantee, warranty or representation as to the accuracy and completeness of the floor plan.

Score	Energy rating	Current	Potential
92+	A		
81-91	B		88   B
69-80	C	79   C	
55-68	D		
39-54	E		
21-38	F		
1-20	G		

## London branches open six days a week Mon - Sat

Canary Wharf | City | Colindale | Dartmouth Park | Ealing | Fulham  
Hammersmith | Hampstead | Highgate | Hyde Park | Kensington | Kew  
Knightsbridge | Nine Elms | Shoreditch | Southall | Surrey Quays  
Wapping | Wembley | White City | Woolwich

## International offices

China | Hong Kong SAR | India | Indonesia | Qatar | Malaysia | Middle East |  
Singapore | South Africa | Thailand | Turkey



Benham & Reeves