



Benham&Reeves

East Acton Lane, Acton, W3

£508 per week, £2,201 per month + fees

 2 Bedrooms  2 Bathrooms  Furnished

This 13th floor apartment is situated within an exciting development in Acton, close to fast transport connections. Perfectly located a short walk from East Acton station (Central Line).

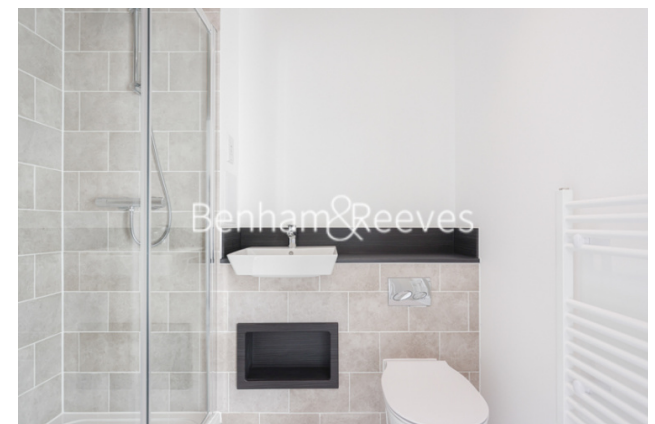
Please [click here](#) for full detail

Property features

2 Bedrooms | 2 Bathrooms | Fully Fitted Modern Kitchen | Large Open Plan Reception | Balcony | EPC-B | Part furnished or furnished | Wood floor | Close to fast transport connections | Nearby East Acton Station

For more information about this property,
please call our Ealing branch on

020 8280 0140



Redress & Client Money Protection :
Benham and Reeves are members of The Property Ombudsman redress scheme and have Client Money protection with ARLA Propertymark.
You can find more information on our website at <https://www.benhams.com/membership/>

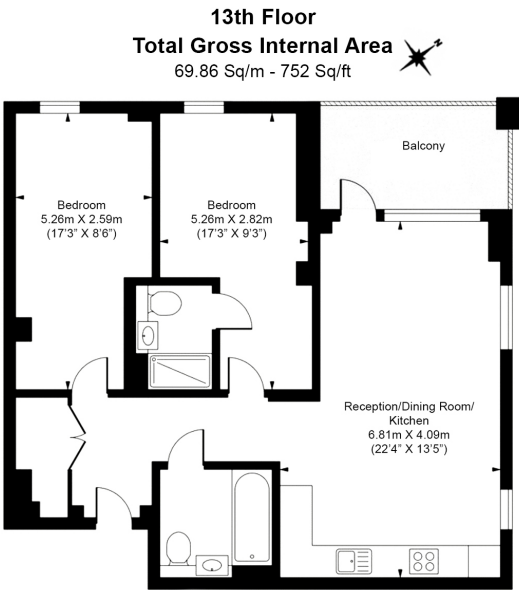
Benham & Reeves



East Acton Lane, Acton, W3

£508 per week, £2,201 per month + fees

www.benhams.com



Floor Plan measurements are approximate and are for illustrative purposes only. While we do not doubt the floor plans accuracy, we make no guarantee, warranty or representation as to the accuracy and completeness of the floor plan.

Score	Energy rating	Current	Potential
92+	A		
81-91	B	82 B	82 B
69-80	C		
55-68	D		
39-54	E		
21-38	F		
1-20	G		

London branches open six days a week Mon - Sat

Canary Wharf | City | Colindale | Dartmouth Park | Ealing | Fulham
Hammersmith | Hampstead | Highgate | Hyde Park | Kensington | Kew
Knightsbridge | Nine Elms | Shoreditch | Southall | Surrey Quays
Wapping | Wembley | White City | Woolwich

International offices

China | Hong Kong SAR | India | Indonesia | Qatar | Malaysia | Middle East |
Singapore | South Africa | Thailand | Turkey

