



Benham & Reeves

Heartwood Boulevard, Acton, W3

£439 per week, £1,902 per month + fees

 Studio  1 Bathroom  Furnished

This studio apartment is situated on the 9th floor, offering plenty of natural light. Acton Mainline Station is just a short walk away and is a strategic stop on the new super-fast Elizabeth Line.

Please [click here](#) for full detail

Property features

Studio apartment | Concierge | Balcony | Wood floors | Furnished | EPC-B | 431 sq ft | Beautiful and modern bathroom | Nearby Acton Mainline Station

For more information about this property,
please call our Ealing branch on

020 8280 0140

Redress & Client Money Protection :

Benham and Reeves are members of The Property Ombudsman redress scheme and have Client Money protection with ARLA Propertymark. You can find more information on our website at <https://www.benhamandreeves.com/membership/>



Benham&Reeves



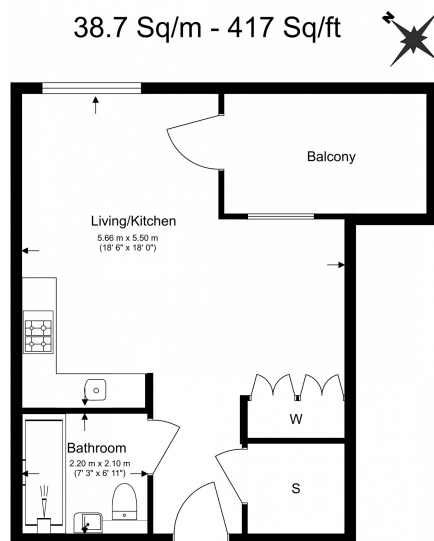
Heartwood Boulevard, Acton, W3

£439 per week, £1,902 per month + fees

www.benhams.com

Total Gross Internal Area

38.7 Sq/m - 417 Sq/ft



Floor Plan measurements are approximate and are for illustrative purposes only. While we do not doubt the floor plans accuracy, we make no guarantee, warranty or representation as to the accuracy and completeness of the floor plan.

Score	Energy rating	Current	Potential
92+	A		
81-91	B	82 B	82 B
69-80	C		
55-68	D		
39-54	E		
21-38	F		
1-20	G		

London branches open six days a week Mon - Sat

Canary Wharf | City | Colindale | Dartmouth Park | Ealing | Fulham
Hammersmith | Hampstead | Highgate | Hyde Park | Kensington | Kew
Knightsbridge | Nine Elms | Shoreditch | Southall | Surrey Quays
Wapping | Wembley | White City | Woolwich

International offices

China | Hong Kong SAR | India | Indonesia | Qatar | Malaysia | Middle East |
Singapore | South Africa | Thailand | Turkey



Benham & Reeves