



Benham & Reeves

Portal Way, Acton, W3

£600 per week, £2,600 per month + fees

 2 Bedrooms  2 Bathrooms  Furnished

A spectacular 9th floor apartment set in an iconic building situated within sought-after development in Acton, minutes away from tube and Crossrail, delivering an excellent connectivity.

Please [click here](#) for full detail

Property features

2 Bedrooms | 2 bathrooms | Residents gym | Furnished | Balcony | EPC-B | Concierge | Wood floors | Excellent Connectivity | Minutes away from tube Station

For more information about this property, please call our Ealing branch on

020 8280 0140

Redress & Client Money Protection :

Benham and Reeves are members of The Property Ombudsman redress scheme and have Client Money protection with ARLA Propertymark. You can find more information on our website at <https://www.benhams.com/membership/>



Benham & Reeves

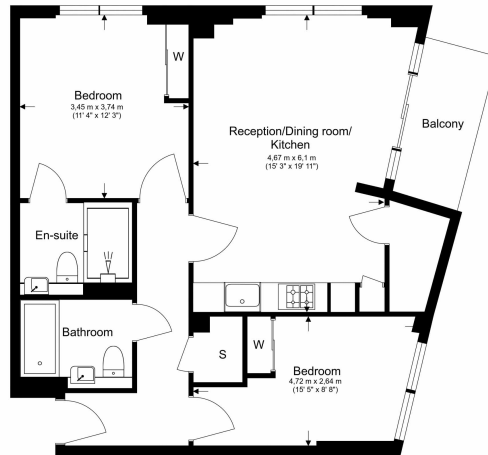


Portal Way, Acton, W3

£600 per week, £2,600 per month + fees

www.benhams.com

Ninth Floor
Total Gross Internal Area
73.24 Sq/m - 788 Sq/ft



Benham & Reeves

Floor Plan measurements are approximate and are for illustrative purposes only. While we do not doubt the floor plans accuracy, we make no guarantee, warranty or representation as to the accuracy and completeness of the floor plan.

Score	Energy rating	Current	Potential
92+	A		
81-91	B	86 B	86 B
69-80	C		
55-68	D		
39-54	E		
21-38	F		
1-20	G		

London branches open six days a week Mon - Sat

Canary Wharf | City | Colindale | Dartmouth Park | Ealing | Fulham
Hammersmith | Hampstead | Highgate | Hyde Park | Kensington | Kew
Knightsbridge | Nine Elms | Shoreditch | Southall | Surrey Quays
Wapping | Wembley | White City | Woolwich

International offices

China | Hong Kong SAR | India | Indonesia | Qatar | Malaysia | Middle East |
Singapore | South Africa | Thailand | Turkey



Benham & Reeves