



Benham & Reeves

**Mary Neuner Road, Alexandra, N8**

£612 per week, £2,650 per month + fees

🛏️ 2 Bedrooms    🚿 1 Bathroom    🛋️ Furnished

Brand new apartment, with underground parking space, within an exciting new development within walking distance from Wood Green and Turnpike Lane on the Piccadilly Line, and Hornsey and Alexandra Palace on the mainline, providing quick access to Kings Cross or Central London in under 30 minutes.

Please [click here](#) for full detail

## Property features

**Two Double Bedrooms | Two Bathrooms | Open Plan Kitchen | Reception Room | Balcony | EPC-B | 24/7 Concierge | Swimming Pool | Gym, Working Spaces, Lifts, Bike Storage | Nearby Underground station is Hampstead (Northern Line)**

For more information about this property,  
please call our Highgate branch on

**020 8341 2335**

Redress & Client Money Protection :

Benham and Reeves are members of The Property Ombudsman redress scheme and have Client Money protection with ARLA Propertymark. You can find more information on our website at <https://www.benham.com/membership/>



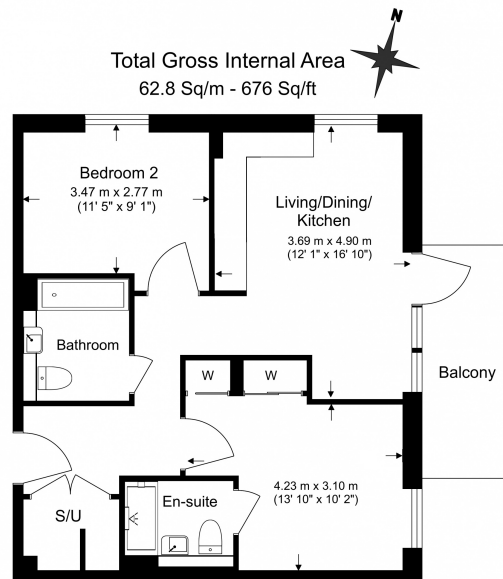
Benham & Reeves



# Mary Neuner Road, Alexandra, N8

£612 per week, £2,650 per month + fees

www.benhams.com



BenhamReeves

Floor Plan measurements are approximate and are for illustrative purposes only. While we do not doubt the floor plans accuracy, we make no guarantee, warranty or representation as to the accuracy and completeness of the floor plan.

Score	Energy rating	Current	Potential
92+	A		
81-91	B	84 B	84 B
69-80	C		
55-68	D		
39-54	E		
21-38	F		
1-20	G		

## London branches open six days a week Mon - Sat

Canary Wharf | City | Colindale | Dartmouth Park | Ealing | Fulham  
Hammersmith | Hampstead | Highgate | Hyde Park | Kensington | Kew  
Knightsbridge | Nine Elms | Shoreditch | Southall | Surrey Quays  
Wapping | Wembley | White City | Woolwich

## International offices

China | Hong Kong SAR | India | Indonesia | Qatar | Malaysia | Middle East |  
Singapore | South Africa | Thailand | Turkey



BenhamReeves