



Benham & Reeves

Werner Court, Aqua Vista Square, E3

£404 per week, £1,751 per month + fees

 1 Bedroom  1 Bathroom  Furnished

Well-presented, furnished 5th floor apartment situated in a popular development located on a tranquil canal. Located close to Langdon Park DLR station.

Please [click here](#) for full detail

Property features

Large Bedroom with Build-in Wardrobe | One Bathroom | Fully Furnished | Fitted Kitchen | Open Plan Reception with Wooden Flooring | EPC-C | Concierge Service and CCTV | Video Call Entry System | Ideal for Professionals | Moments from Langdon Park DLR Station

For more information about this property, please call our Canary Wharf branch on

020 8036 3200

Redress & Client Money Protection :

Benham and Reeves are members of The Property Ombudsman redress scheme and have Client Money protection with ARLA Propertymark. You can find more information on our website at <https://www.benhams.com/membership/>



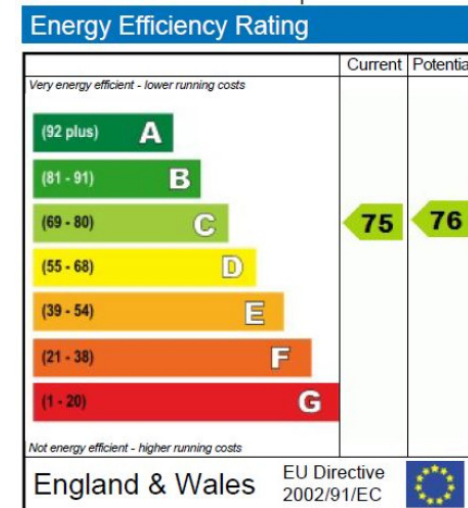
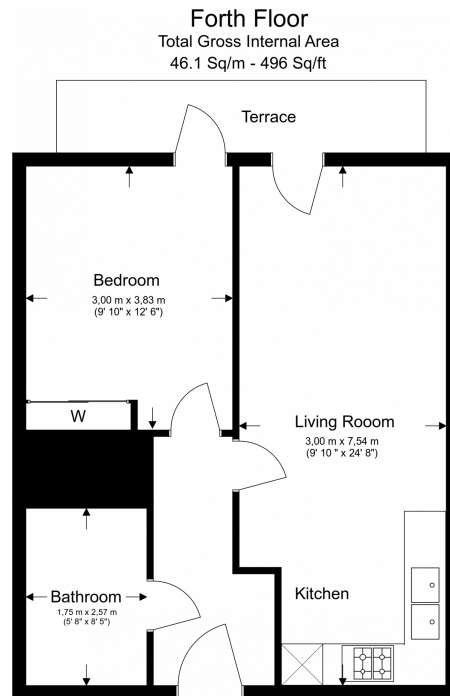
Benham & Reeves



Werner Court, Aqua Vista Square, E3

£404 per week, £1,751 per month + fees

www.benhams.com



London branches open six days a week Mon - Sat

Canary Wharf | City | Colindale | Dartmouth Park | Ealing | Fulham
Hammersmith | Hampstead | Highgate | Hyde Park | Kensington | Kew
Knightsbridge | Nine Elms | Shoreditch | Southall | Surrey Quays
Wapping | Wembley | White City | Woolwich



International offices

China | Hong Kong SAR | India | Indonesia | Qatar | Malaysia | Middle East | Pakistan
Singapore | South Africa | Thailand | Turkey

Benham & Reeves