



Benham & Reeves

**Hodford Road, Golders Green, NW11**

£2,450 per week, £10,617 per month + fees

 3 Bedrooms    3 Bathrooms    Furnished

A luxurious fifth floor penthouse apartment set in a prestigious development with stunning panoramic views of the London skyline and situated near the open spaces of Golders Hill Park and Hampstead Heath. Well-located for Golders Green Tube Station.

Please [click here](#) for full detail

## Property features

**3 Bedrooms | 3 Bathrooms | Reception | Furnished | Fitted Kitchen | EPC-B | 3 Private Balconies | Communal Garden | Nearby Golders Green Tube Station**

For more information about this property,  
please call our Hampstead branch on

**020 7435 9681**

Redress & Client Money Protection :

Benham and Reeves are members of The Property Ombudsman redress scheme and have Client Money protection with ARLA Propertymark. You can find more information on our website at <https://www.benhamandreeves.com/membership/>



Benham & Reeves

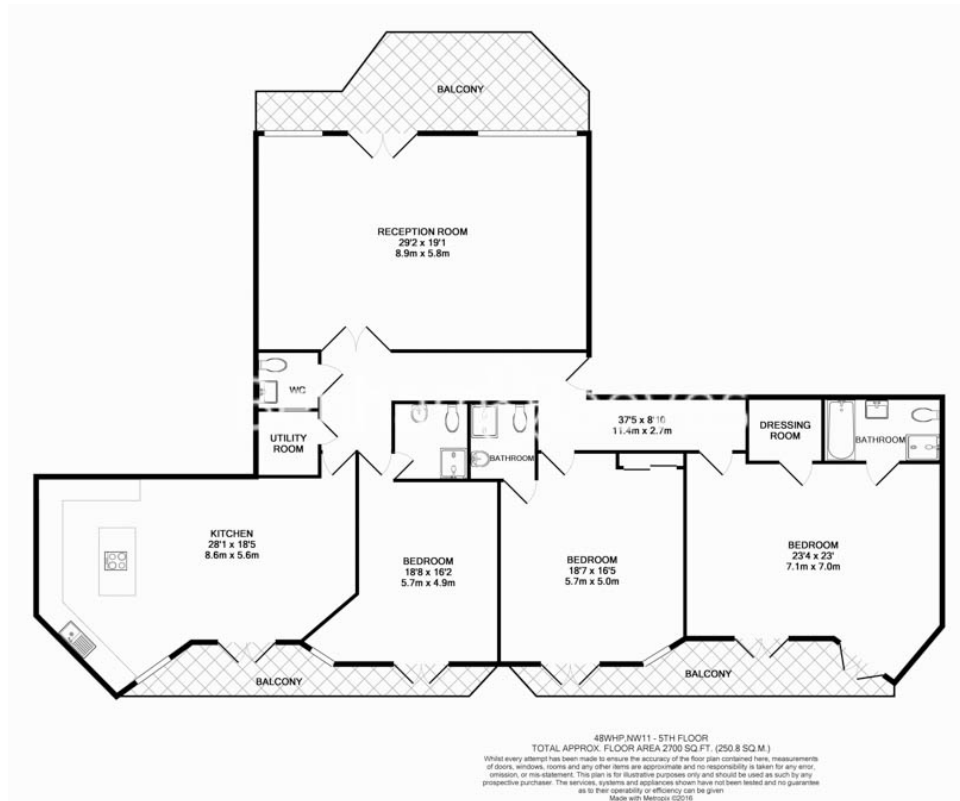





# Hodford Road, Golders Green, NW11

£2,450 per week, £10,617 per month + fees

[www.benhams.com](http://www.benhams.com)



Energy Efficiency Rating		
	Current	Potential
<i>Very energy efficient - lower running costs</i>		
(92-plus) <b>A</b>	<b>82</b>	<b>83</b>
(81-91) <b>B</b>		
(69-80) <b>C</b>		
(55-68) <b>D</b>		
(39-54) <b>E</b>		
(21-38) <b>F</b>		
(1-20) <b>G</b>		
<i>Not energy efficient - higher running costs</i>		
England & Wales		EU Directive 2002/91/EC 

## London branches open six days a week Mon - Sat

Canary Wharf | City | Colindale | Dartmouth Park | Ealing | Fulham  
Hammersmith | Hampstead | Highgate | Hyde Park | Kensington | Kew  
Knightsbridge | Nine Elms | Shoreditch | Southall | Surrey Quays  
Wapping | Wembley | White City | Woolwich

## International offices

China | Hong Kong SAR | India | Israel | Malaysia | Middle East | Pakistan  
Qatar | Singapore | South Africa | Thailand | Turkey



Benham & Reeves