



Benham & Reeves

Flask Walk, Hampstead, NW3

£2,000 per week, £8,667 per month + fees

 4 Bedrooms  3 Bathrooms  Unfurnished

Large sophisticated house set over several levels, situated on a well-regarded residential street in the heart of Hampstead, near to Hampstead Heath and a stone's throw from Hampstead Underground Station (Northern Line).

Please [click here](#) for full detail

Property features

4 Double Bedroom | 3 Bathrooms | Family Home | Private Garden | Private Balcony | EPC-C | Two Ensuite | Fantastic Views | Wood Floors Throughout | Walking Distance From Hampstead Tube

For more information about this property, please call our Hampstead branch on

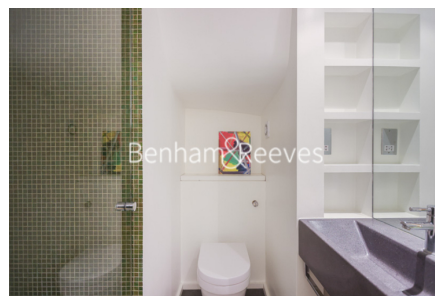
020 7435 9681

Redress & Client Money Protection :

Benham and Reeves are members of The Property Ombudsman redress scheme and have Client Money protection with ARLA Propertymark. You can find more information on our website at <https://www.benhamandreeves.com/membership/>



Benham&Reeves



Flask Walk, Hampstead, NW3

£2,000 per week, £8,667 per month + fees

www.benhams.com

Score	Energy rating	Current	Potential
92+	A		
81-91	B		87 B
69-80	C	71 C	
55-68	D		
39-54	E		
21-38	F		
1-20	G		

London branches open six days a week Mon - Sat

Canary Wharf | City | Colindale | Dartmouth Park | Ealing | Fulham
Hammersmith | Hampstead | Highgate | Hyde Park | Kensington | Kew
Knightsbridge | Nine Elms | Shoreditch | Southall | Surrey Quays
Wapping | Wembley | White City | Woolwich

International offices

China | Hong Kong SAR | India | Israel | Malaysia | Middle East | Pakistan
Qatar | Singapore | South Africa | Thailand | Turkey

