



Benham & Reeves

Victory Parade, Arsenal Riverside, SE18

£381 per week, £1,650 per month + fees

🛏️ 1 Bedroom 🚿 1 Bathroom 🛋️ Unfurnished

Contemporary unfurnished 3rd floor apartment situated in a sought-after riverside development in Woolwich. Conveniently located next to Woolwich Arsenal Riverboat services and is less than a five-minute walk from Woolwich Arsenal DLR, National Rail stations and Woolwich tube station Elizabeth Line. EPC B

Please [click here](#) for full detail

Property features

Contemporary furnished 1 bed Manhattan located on the 3rd fl | Open plan kitchen with integrated kitchen appliances | Ample storage with large built in wardrobe and utility room | Overall spans out 450 sqft with private balcony | Close to amenities | EPC -B | 24 hours concierge service and resident gymnasium | fitted kitchen | Moments to Woolwich tube station

For more information about this property, please call our Woolwich branch on

020 8051 0700

Redress & Client Money Protection :

Benham and Reeves are members of The Property Ombudsman redress scheme and have Client Money protection with ARLA Propertymark. You can find more information on our website at <https://www.benhams.com/membership/>



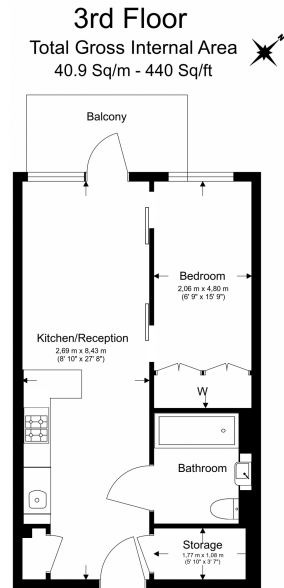
Benham & Reeves



Victory Parade, Arsenal Riverside, SE18

£381 per week, £1,650 per month + fees

www.benhams.com



Floor Plan measurements are approximate and are for illustrative purposes only. While we do not doubt the floor plans accuracy, we make no guarantee, warranty or representation as to the accuracy and completeness of the floor plan.

Score	Energy rating	Current	Potential
92+	A		
81-91	B	85 B	85 B
69-80	C		
55-68	D		
39-54	E		
21-38	F		
1-20	G		

London branches open six days a week Mon - Sat

Canary Wharf | City | Colindale | Dartmouth Park | Ealing | Fulham
Hammersmith | Hampstead | Highgate | Hyde Park | Kensington | Kew
Knightsbridge | Nine Elms | Shoreditch | Southall | Surrey Quays
Wapping | Wembley | White City | Woolwich

International offices

China | Hong Kong SAR | India | Indonesia | Qatar | Malaysia | Middle East |
Singapore | South Africa | Thailand | Turkey

