



Benham&Reeves

Avenue Close, Avenue Road, NW8

£831 per week, £3,600 per month + fees

 3 Bedrooms  3 Bathrooms  Unfurnished

A tastefully presented large ground floor apartment, with communal heating, hot water and gardens situated in portered mansion block along a prestigious road, with off street parking. Perfectly positioned for St John's Wood Underground Station (Jubilee Line).

Please [click here](#) for full detail

Property features

Three double bedrooms, each with its own en-suite bathroom | Guest WC | Spacious double-aspect 29 ft reception room with direct | Two parking spaces available on a first-come, first-served | On-site porter | EPC-C | Separate storage unit | Excellent location | Close to local amenities and transport links

For more information about this property,
please call our Hampstead branch on

020 7435 9681

Redress & Client Money Protection :

Benham and Reeves are members of The Property Ombudsman redress scheme and have Client Money protection with ARLA Propertymark. You can find more information on our website at <https://www.benhams.com/membership/>



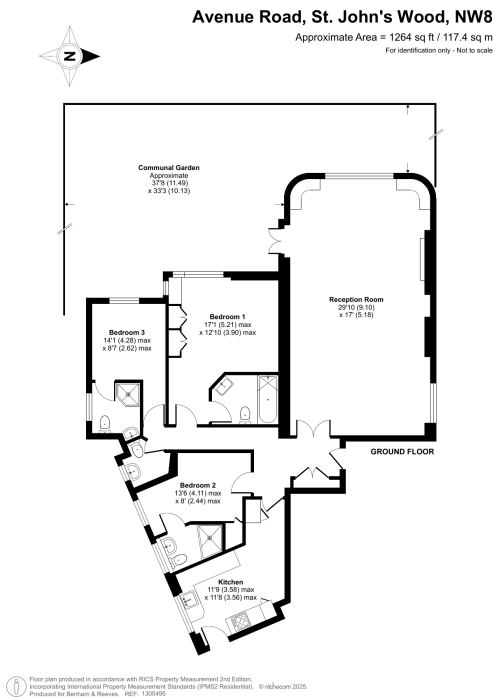
Benham & Reeves



Avenue Close, Avenue Road, NW8

£831 per week, £3,600 per month + fees

www.benhams.com



Score	Energy rating	Current	Potential
92+	A		
81-91	B		
69-80	C	69 c	69 c
55-68	D		
39-54	E		
21-38	F		
1-20	G		

London branches open six days a week Mon - Sat

Canary Wharf | City | Colindale | Dartmouth Park | Ealing | Fulham
Hammersmith | Hampstead | Highgate | Hyde Park | Kensington | Kew
Knightsbridge | Nine Elms | Shoreditch | Southall | Surrey Quays
Wapping | Wembley | White City | Woolwich

International offices

China | Hong Kong SAR | India | Indonesia | Qatar | Malaysia | Middle East |
Singapore | South Africa | Thailand | Turkey

