



Benham & Reeves

Chartwell House, Battersea, SW11

£877 per week, £3,800 per month + fees

 2 Bedrooms  2 Bathrooms  Furnished

A modern two-bedroom apartment located in the modern Prince of Wales development located a short walk from Battersea Park and Battersea Power Station.

Please [click here](#) for full detail

Property features

Two double bedrooms | Two bathrooms | Balcony | Open planned living | Dishwasher | EPC-B | 24 Hour Concierge | Swimming Pool | Battersea Park Location | Battersea Power Station tube station

For more information about this property, please call our Nine Elms branch on

020 3282 3700

Redress & Client Money Protection :

Benham and Reeves are members of The Property Ombudsman redress scheme and have Client Money protection with ARLA Propertymark. You can find more information on our website at <https://www.benhams.com/membership/>



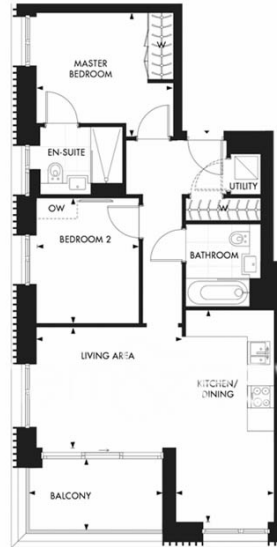
Benham & Reeves



Chartwell House, Battersea, SW11

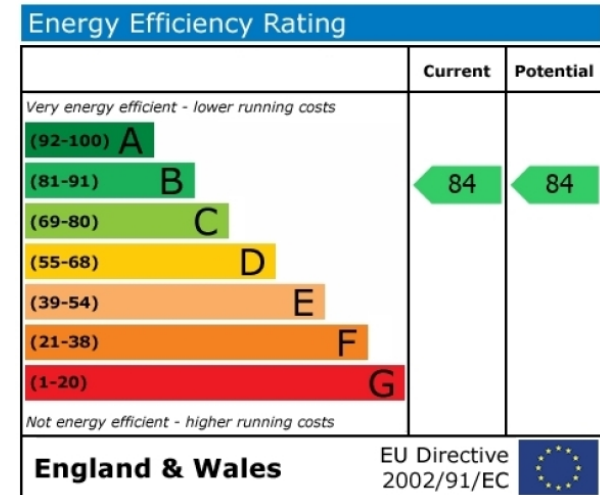
£877 per week, £3,800 per month + fees

www.benhams.com



Total Area	70.37 sqm	758 sqft
Living Area	3900 mm x 3220 mm	12'10" x 10'7"
Kitchen/Dining	5675 mm x 2613 mm	18'7" x 8'7"
Master Bedroom	3670 mm x 3310 mm	12'0" x 10'10"
Bedroom 2	3350 mm x 2750 mm	11'0" x 9'0"
Balcony	3625 mm x 1960 mm	11'11" x 6'5"

Floor Plan measurements are approximate and are for illustrative purposes only. While we do not doubt the floor plans accuracy, we make no guarantee, warranty or representation as to the accuracy and completeness of the floor plan.



London branches open six days a week Mon - Sat

Canary Wharf | City | Colindale | Dartmouth Park | Ealing | Fulham
Hammersmith | Hampstead | Highgate | Hyde Park | Kensington | Kew
Knightsbridge | Nine Elms | Shoreditch | Southall | Surrey Quays
Wapping | Wembley | White City | Woolwich



International offices

China | Hong Kong SAR | India | Indonesia | Qatar | Malaysia | Middle East |
Singapore | South Africa | Thailand | Turkey

Benham & Reeves