



Benham & Reeves

Ivy Point, Hannaford Walk, E3

£577 per week, £2,500 per month + fees

 2 Bedrooms  1 Bathroom  Unfurnished

Modern apartment situated within an impressive tower, with communal roof terrace, in the heart of Bow. Ideally positioned for Bromley by Bow Tube Station.

Please [click here](#) for full detail

Property features

Two Bedroom | Family Size Bathroom | Open Planned Living | Fitted Kitchen | Part Furnished | EPC-B | Private Balcony | 24hr Concierge | Communal Roof Terrace | Bromley By Bow Underground Station Nearby

For more information about this property,
please call our Canary Wharf branch on

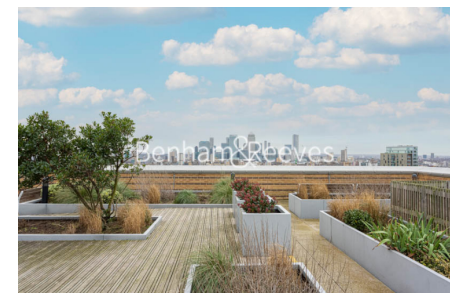
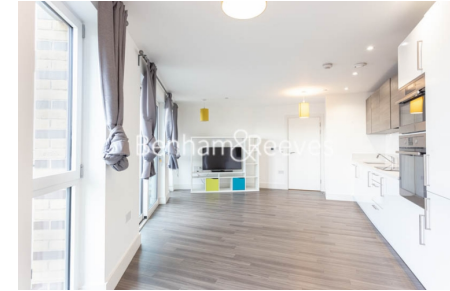
020 8036 3200

Redress & Client Money Protection :

Benham and Reeves are members of The Property Ombudsman redress scheme and have Client Money protection with ARLA Propertymark. You can find more information on our website at <https://www.benhams.com/membership/>



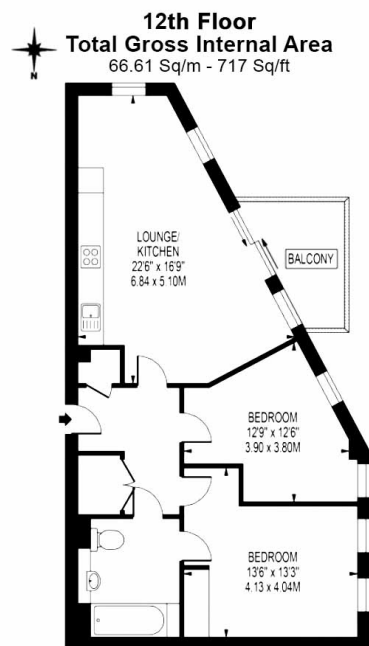
Benham&Reeves



Ivy Point, Hannaford Walk, E3

£577 per week, £2,500 per month + fees

www.benhams.com



Floor Plan measurements are approximate and are for illustrative purposes only. While we do not doubt the floor plans accuracy, we make no guarantee, warranty or representation as to the accuracy and completeness of the floor plan.

Score	Energy rating	Current	Potential
92+	A		
81-91	B	85 B	85 B
69-80	C		
55-68	D		
39-54	E		
21-38	F		
1-20	G		

London branches open six days a week Mon - Sat

Canary Wharf | City | Colindale | Dartmouth Park | Ealing | Fulham
Hammersmith | Hampstead | Highgate | Hyde Park | Kensington | Kew
Knightsbridge | Nine Elms | Shoreditch | Southall | Surrey Quays
Wapping | Wembley | White City | Woolwich

International offices

China | Hong Kong SAR | India | Israel | Malaysia | Middle East | Pakistan
Qatar | Singapore | South Africa | Thailand | Turkey



Benham & Reeves