



Benham & Reeves

Salisbury House, Battersea, SW11

£762 per week, £3,300 per month + fees

 1 Bedroom  1 Bathroom  Furnished

A modern apartment, with good resident onsite facilities, a short walk from Battersea Park, and a short walk from Battersea Power Station.

Please [click here](#) for full detail

Property features

One double bedroom | One bathroom | Furnished | 24 hour concierge | Swimming pool | EPC- B | fully integrated kitchen. | Air cooling | Battersea Power Station Tube Station

For more information about this property,
please call our Nine Elms branch on

020 3282 3700



Redress & Client Money Protection :
Benham and Reeves are members of The Property Ombudsman redress scheme and have Client Money protection with ARLA Propertymark.
You can find more information on our website at <https://www.benhams.com/membership/>

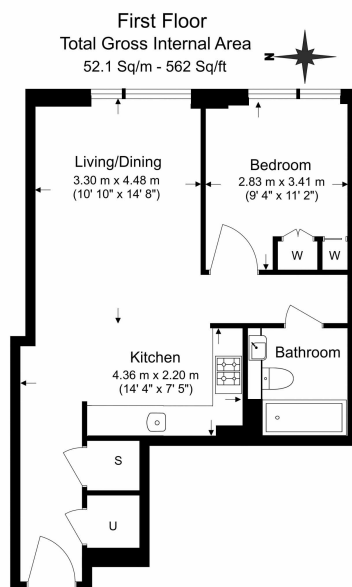
Benham & Reeves



Salisbury House, Battersea, SW11

£762 per week, £3,300 per month + fees

www.benhams.com



Benham & Reeves

Floor Plan measurements are approximate and are for illustrative purposes only. While we do not doubt the floor plans accuracy, we make no guarantee, warranty or representation as to the accuracy and completeness of the floor plan.

Score	Energy rating	Current	Potential
92+	A		
81-91	B	81 B	81 B
69-80	C		
55-68	D		
39-54	E		
21-38	F		
1-20	G		

Activate Wi

London branches open six days a week Mon - Sat

Canary Wharf | City | Colindale | Dartmouth Park | Ealing | Fulham
Hammersmith | Hampstead | Highgate | Hyde Park | Kensington | Kew
Knightsbridge | Nine Elms | Shoreditch | Southall | Surrey Quays
Wapping | Wembley | White City | Woolwich

International offices

China | Hong Kong SAR | India | Indonesia | Qatar | Malaysia | Middle East |
Singapore | South Africa | Thailand | Turkey



Benham & Reeves