



Benham & Reeves

Pearce House, Battersea, SW11

£738 per week, £3,200 per month + fees

 1 Bedroom  1 Bathroom  Furnished

A modern 14th floor furnished apartment with AIR COOLING and views towards West London situated within a very desirable development on the River Thames with a plethora of resident amenities. A short walk from Battersea Park.

Please [click here](#) for full detail

Property features

14th floor | West London Views | Air cooling | Winter garden | Dishwasher | EPC- B | 24-hour concierge | Gym | Swimming Pool | Nearby Battersea Power Station

For more information about this property,
please call our Nine Elms branch on

020 3282 3700

Redress & Client Money Protection :

Benham and Reeves are members of The Property Ombudsman redress scheme and have Client Money protection with ARLA Propertymark. You can find more information on our website at <https://www.benhams.com/membership/>



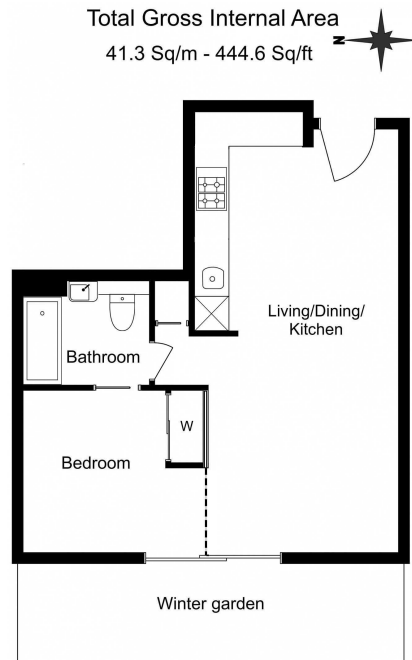
Benham & Reeves



Pearce House, Battersea, SW11

£738 per week, £3,200 per month + fees

www.benhams.com



Benham & Reeves

Floor Plan measurements are approximate and are for illustrative purposes only. While we do not doubt the floor plans accuracy, we make no guarantee, warranty or representation as to the accuracy and completeness of the floor plan.

Energy Efficiency Rating		
	Current	Potential
<i>Very energy efficient - lower running costs</i>		
(92-100) A		
(81-91) B		
(69-80) C	77	77
(55-68) D		
(39-54) E		
(21-38) F		
(1-20) G		
<i>Not energy efficient - higher running costs</i>		
England & Wales	EU Directive 2002/91/EC	

London branches open six days a week Mon - Sat

Canary Wharf | City | Colindale | Dartmouth Park | Ealing | Fulham
Hammersmith | Hampstead | Highgate | Hyde Park | Kensington | Kew
Knightsbridge | Nine Elms | Shoreditch | Southall | Surrey Quays
Wapping | Wembley | White City | Woolwich

International offices

China | Hong Kong SAR | India | Indonesia | Qatar | Malaysia | Middle East | Pakistan
Singapore | South Africa | Thailand | Turkey



Benham & Reeves