



Benham & Reeves

Sovereign Court, Beadon Road, W6

£831 per week, £3,600 per month + fees

 2 Bedrooms  2 Bathrooms  Unfurnished

Spacious luxury, 2nd floor air conditioned apartment is situated within a prestigious development in the heart of Hammersmith. Located within walking distance from Hammersmith tube station

Please [click here](#) for full detail

Property features

2 Double Bedroom Apartment with Built-in Wardrobe | Fully Fitted Kitchen Integrated with Well-Known Appliances | Double Reception Room with Dining Area | LED Spotlights / Sizable Private Balcony | Luxurious 2 x Bathrooms | EPC-B | Air Ventilation / Underfloor Heating / Air Conditioning | Offered Unfurnished | Abundance of Storage | Nearby Hammersmith Stations

For more information about this property,
please call our Hammersmith branch on

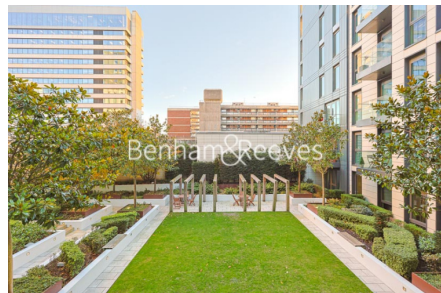
020 8600 0960

Redress & Client Money Protection :

Benham and Reeves are members of The Property Ombudsman redress scheme and have Client Money protection with ARLA Propertymark. You can find more information on our website at <https://www.benhams.com/membership/>



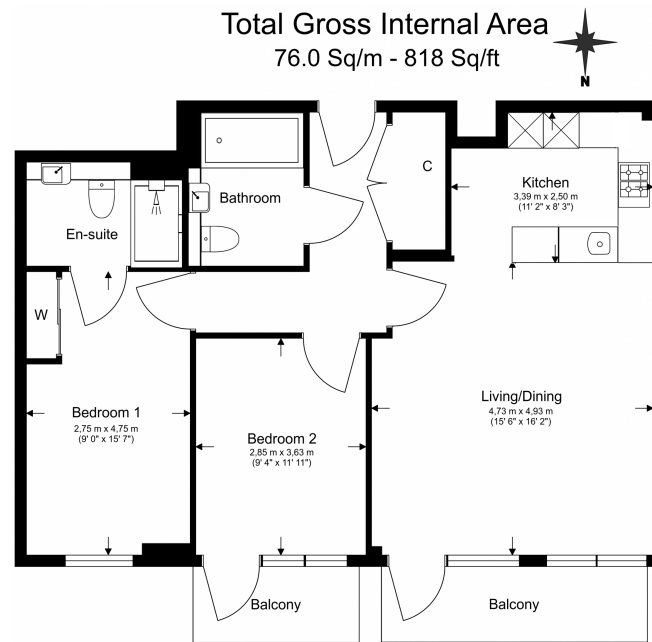
Benham&Reeves



Sovereign Court, Beadon Road, W6

£831 per week, £3,600 per month + fees

www.benhams.com



Benham & Reeves

Floor Plan measurements are approximate and are for illustrative purposes only. While we do not doubt the floor plans accuracy, we make no guarantee, warranty or representation as to the accuracy and completeness of the floor plan.

London branches open six days a week Mon - Sat

Canary Wharf | City | Colindale | Dartmouth Park | Ealing | Fulham
Hammersmith | Hampstead | Highgate | Hyde Park | Kensington | Kew
Knightsbridge | Nine Elms | Shoreditch | Southall | Surrey Quays
Wapping | Wembley | White City | Woolwich

International offices

China | Hong Kong SAR | India | Indonesia | Qatar | Malaysia | Middle East | Pakistan
Singapore | South Africa | Thailand | Turkey



Benham & Reeves