



Benham & Reeves

East Drive, Beaufort Park, NW9

£531 per week, £2,300 per month + fees

 2 Bedrooms  2 Bathrooms  Furnished

****ON SITE AGENT****

Stylish, bright newly built 1st floor apartment, with underground parking, situated in a desirable development in North West London with excellent resident amenities. Ideally located 0.5 Miles from Colindale Underground Station (Northern Line) EPC - C

Please [click here](#) for full detail

Property features

Selection Of Amenities On Site | Well Tended Communal Gardens | Private Balcony | Tastefully Furnished | 24 Hours Estate Management | EPC- C | Underground Parking | Free Resident's Gym, Swimming Pool, Spa And Jacuzzi | Situated Within Beaufort Park Development In Colindale NW9 | 0.5 Miles To Colindale Underground Station

For more information about this property,
please call our Colindale branch on

020 8732 7980

Redress & Client Money Protection :

Benham and Reeves are members of The Property Ombudsman redress scheme and have Client Money protection with ARLA Propertymark. You can find more information on our website at <https://www.benhamandreeves.com/membership/>



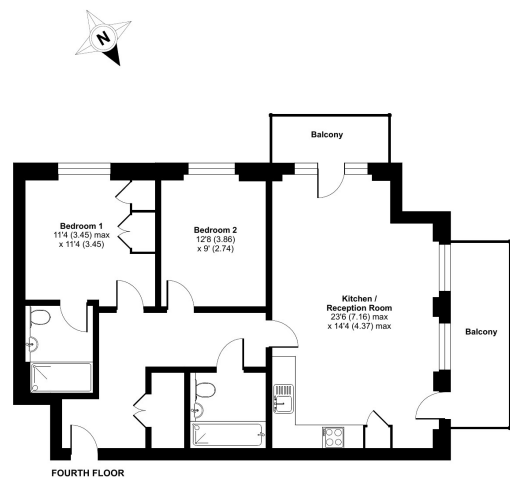
Benham & Reeves



East Drive, Beaufort Park, NW9

£531 per week, £2,300 per month + fees

www.benhams.com



Floor plan produced in accordance with RICS Property Measurement 2nd Edition.
Incorporating International Property Measurement Standards (IPMS Residential). © richcom 2025.
Produced for Benham & Reeves. REF: 1318449

Score	Energy rating	Current	Potential
92+	A		
81-91	B		
69-80	C	80 C	80 C
55-68	D		
39-54	E		
21-38	F		
1-20	G		

London branches open six days a week Mon - Sat

Canary Wharf | City | Colindale | Dartmouth Park | Ealing | Fulham
Hammersmith | Hampstead | Highgate | Hyde Park | Kensington | Kew
Knightsbridge | Nine Elms | Shoreditch | Southall | Surrey Quays
Wapping | Wembley | White City | Woolwich

International offices

China | Hong Kong SAR | India | Indonesia | Qatar | Malaysia | Middle East |
Singapore | South Africa | Thailand | Turkey



Benham&Reeves