



Benham & Reeves

Ebury Street, Belgravia, SW1W

£1,550 per week, £6,717 per month + fees

 3 Bedrooms  2 Bathrooms  Furnished

An immaculate 1,190 sq ft THREE-BEDROOM apartment featuring wood flooring throughout, as well as a private TERRACE in the highly-regarded 55 EBURY STREET in the heart of BELGRAVIA. This discreetly-positioned building offers lush gardens & is ideally-located within minutes of VICTORIA STATION. Parking included.

Please [click here](#) for full detail

Property features

Prestigious Building | 1,190 SQ FT | Private Terrace | 24 Hr Porter | Private Parking | EPC-C | Prime Belgravia Location | Residents Garden | 2 Minutes To Elizabeth Street & 8 Minutes To Sloane Square | 3 Minutes To Victoria Station

For more information about this property,
please call our Knightsbridge branch on

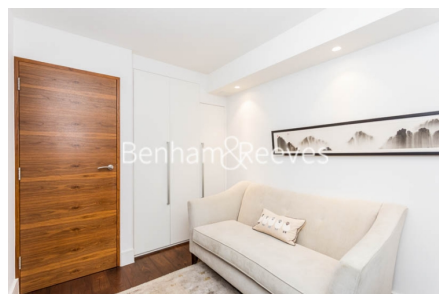
020 7581 2112

Redress & Client Money Protection :

Benham and Reeves are members of The Property Ombudsman redress scheme and have Client Money protection with ARLA Propertymark. You can find more information on our website at <https://www.benhamandreeves.com/membership/>



Benham & Reeves



£1,550 per week, £6,717 per month + fees

The floor plan shows a 3-bedroom house with a reception area, kitchen, and terrace. The layout includes:

- Master Bedroom:** 4.2 m x 3.3 m (14' 0" x 10' 8").
- Bedroom 2:** 2.4 m x 2.6 m (7' 10" x 9' 5").
- Bedroom 1:** 2.3 m x 2.6 m (9' 5" x 8' 7").
- Reception:** 2.8 m x 3.3 m (9' 3" x 10' 8").
- Kitchen:** 3.2 m x 2.8 m (10' 6" x 9' 3").
- En-Suite:** Attached to the Master Bedroom.
- Shower:** Located in the central hallway.
- U, S, S:** Three small storage or utility rooms.
- Terrace:** Located outside the Reception area.

Total Gross Internal Area: 106.7 sqm - 1084 sqft

Benham & Reeves