



Benham & Reeves

**Bourne Street, Belgravia, SW1**

£1,595 per week, £6,912 per month + fees

 3 Bedrooms    2 Bathrooms    Unfurnished

A charming 1,451 sq ft THREE-BEDROOM Townhouse on Bourne Street in the affluent area of BELGRAVIA. This beautiful property benefits from its own private PATIO GARDEN & is ideally-positioned within walking distance to the fabulous shops, restaurants & bars of nearby SLOANE SQUARE, Belgravia & Knightsbridge.

Please [click here](#) for full detail

## Property features

**3 Bedrooms | 2 Receptions | 2 Bathrooms | Prestigious Belgravia location | Fully-Fitted Kitchen/Dining Room | EPC-E | 1,451 sq ft | Un-Furnished | Private Patio Garden | Nearby Sloane Square Tube Station**

For more information about this property,  
please call our Knightsbridge branch on

**020 7581 2112**

Redress & Client Money Protection :

Benham and Reeves are members of The Property Ombudsman redress scheme and have Client Money protection with ARLA Propertymark. You can find more information on our website at <https://www.benhams.com/membership/>



**Benham & Reeves**

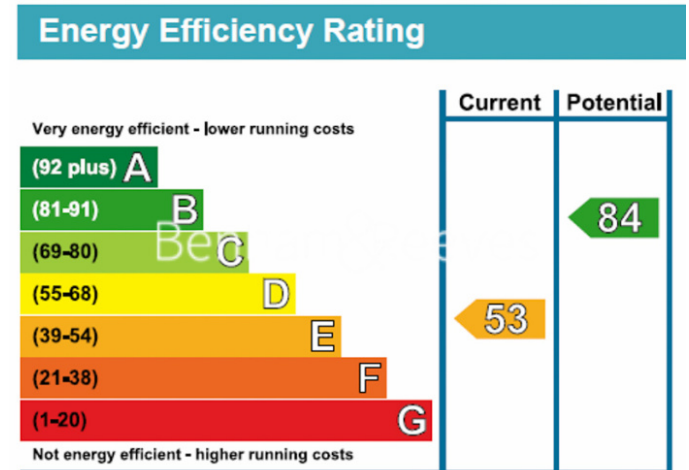
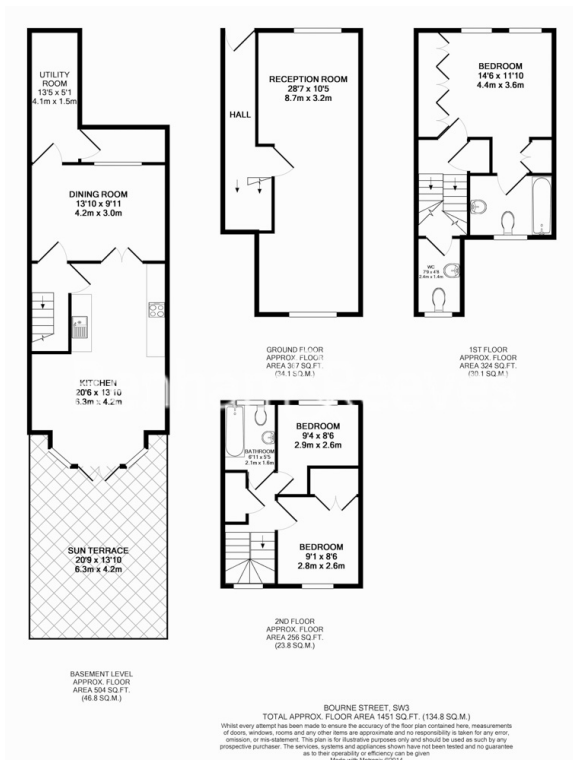




# Bourne Street, Belgravia, SW1

£1,595 per week, £6,912 per month + fees

[www.benhams.com](http://www.benhams.com)



## London branches open six days a week Mon - Sat

Canary Wharf | City | Colindale | Dartmouth Park | Ealing | Fulham  
Hammersmith | Hampstead | Highgate | Hyde Park | Kensington | Kew  
Knightsbridge | Nine Elms | Shoreditch | Southall | Surrey Quays  
Wapping | Wembley | White City | Woolwich

## International offices

China | Hong Kong SAR | India | Indonesia | Qatar | Malaysia | Middle East | Pakistan  
Singapore | South Africa | Thailand | Turkey



Benham & Reeves