



Benham & Reeves

Downside Crescent, Belsize Park, NW3

£1,200 per week, £5,200 per month + fees

 3 Bedrooms  3 Bathrooms 
Furnished/UnFurnished

An immaculately presented apartment, with full home automation and off-street parking, arranged over two floors and situated in a renovated red brick period building close to the amenities of Belsize Park. Conveniently located moments from Belsize Park underground Station (Northern Line) offering direct services to the West End and the City in less than 15 minutes.

Please [click here](#) for full detail

Property features

3 Bedrooms | 3 Bathrooms | Double Reception | Furn/Unfurn | Open Plan Kitchen | EPC-C | Air Conditioned | Media Centre | Nearby Belsize Park underground station

For more information about this property,
please call our Hampstead branch on

020 7435 9681

Redress & Client Money Protection :

Benham and Reeves are members of The Property Ombudsman redress scheme and have Client Money protection with ARLA Propertymark. You can find more information on our website at <https://www.benhams.com/membership/>



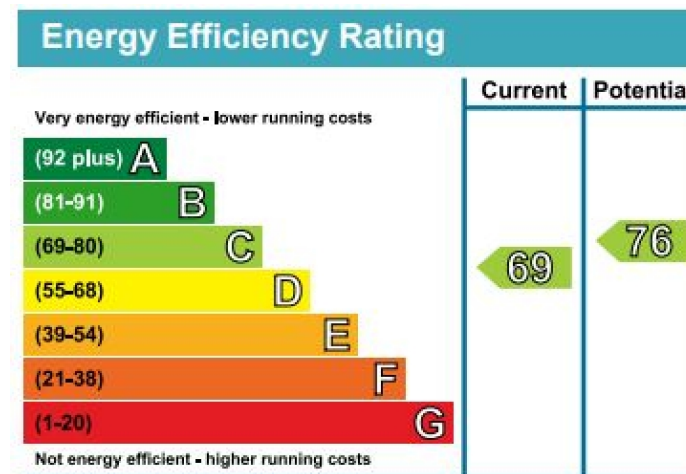
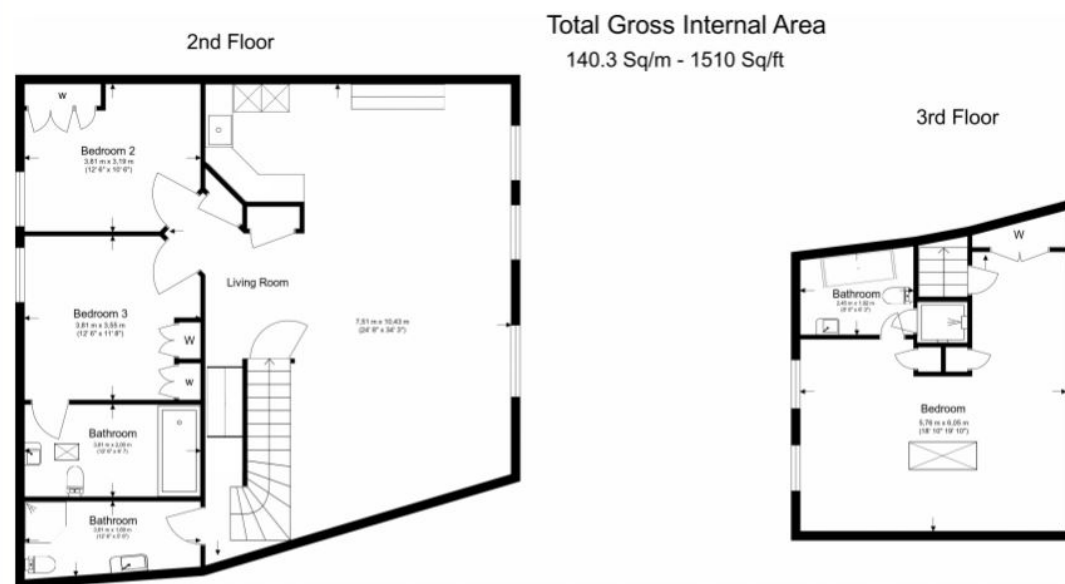
Benham&Reeves



Downside Crescent, Belsize Park, NW3

£1,200 per week, £5,200 per month + fees

www.benhams.com



London branches open six days a week Mon - Sat

Canary Wharf | City | Colindale | Dartmouth Park | Ealing | Fulham
Hammersmith | Hampstead | Highgate | Hyde Park | Kensington | Kew
Knightsbridge | Nine Elms | Shoreditch | Southall | Surrey Quays
Wapping | Wembley | White City | Woolwich

International offices

China | Hong Kong SAR | India | Indonesia | Qatar | Malaysia | Middle East | Pakistan
Singapore | South Africa | Thailand | Turkey



Benham & Reeves